

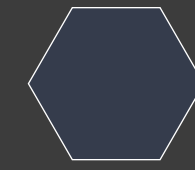


KROOT
CAMO
CLOAK

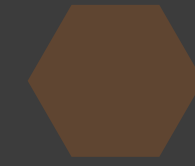
In this tutorial we'll be painting a camo cloak as seen on my Kroot warrior.

I went for a zig zag pattern on this one but feel free to change it to your liking.

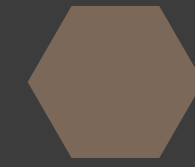
Have fun painting!



SCALE 75
ABYSSAL BLUE



VALLEJO MODEL COLOR
LEATHER BROWN



VALLEJO MODEL COLOR
GER. C. PALE BROWN



VALLEJO MODEL COLOR
DESERT YELLOW



VALLEJO MODEL COLOR
IRAQI SAND

COLORS

↘
WINSOR & NEWTON
SERIES 7 - MINIATURES
SIZE 2

↘
BASECOAT MIX
WATER 50/50 PAINT

↘
LAYER MIX
WATER 60/40 PAINT

↘
GLAZE MIX
WATER 80/20 PAINT

BRUSHES
& TOOLS

PAINT
MIXES

 **ABYSSAL BLUE
+ LEATHER BROWN**



Starting from a black primed model, apply a base coat with a 1:1 mix of Abyssal Blue and Leather Brown, leaving the darkest recesses black.

 **VALLEJO MODEL COLOR
LEATHER BROWN**



Apply a few thin layers where the light would hit, leaving the shadow areas dark. Smooth out the transitions by glazing.

 **VALLEJO MODEL COLOR
GER. C. PALE BROWN**



Apply highlights with pure Ger. C. Pale Brown, covering a smaller area than in the previous step.

 **GER. C. PALE BROWN
+ DESERT YELLOW**



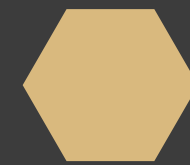
Mix 1:1 and paint on a zig zag pattern.



VALLEJO MODEL COLOR
DESERT YELLOW



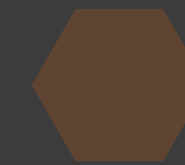
Apply highlights with pure Desert Yellow on the raised areas of the pattern, leaving the areas in the shadows untouched.



VALLEJO MODEL COLOR
IRAQI SAND



Apply final highlights with Iraqi Sand, again only on the raised areas of the pattern, covering a smaller area than in the previous step.



VALLEJO MODEL COLOR
LEATHER BROWN



Add some scratches and dots to the pattern.

THIS IS THE END.
I HOPE YOU FIND THIS
TUTORIAL HELPFUL.
HAPPY PAINTING!