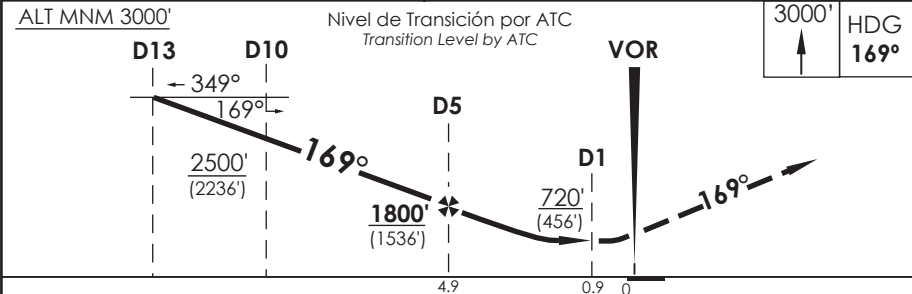
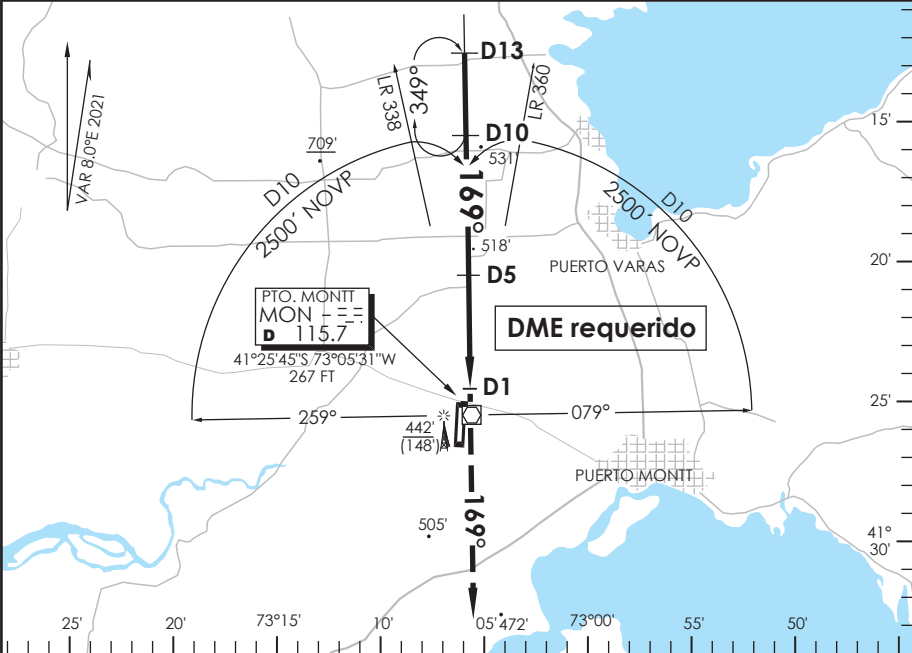


AP. EL TEPUAL
PUERTO MONTT - CHILE

SCTE IAC 3
VOR Z Rwy 17

APP PUERTO MONTT RADAR <i>Puerto Montt Radar Approach</i>		121.3	TORRE PUERTO MONTT <i>Puerto Montt Tower</i>		118.1	CONTROL TERRESTRE <i>Ground Control</i>		121.9
VOR MON 115.7	FINAL APCH CRS 169°	MNM ALT D5 1800' (1536')	MDA 720' (456')	AD Elev. 294' THR 17 Elev. 264'		<div>8600 FT</div> <div>MSA 25 NM MON</div>		
APCH FRUSTRADA: Ascenso 3000' HDG 169°, luego según autorización ATC. <i>Missed Apch: Climb to 3000' on HDG 169°, then according to ATC clearance.</i>								



CATEGORÍA	DIRECTO RWY 17 <i>Straight in RWY 17</i>		CIRCULANDO <i>Circling</i>		ALTN <i>Alternate Minimums</i>
	MDA 720' (456')				
A	1.6 Km		820'	1.6 Km	VER PAG. GEN 2.19 <i>SEE PAGE GEN 2.19</i>
B			(526')	2.4 Km	
C			960'	3.2 Km	
D	2.4 Km		(666')		

Veloc. Terrestre Kts	80	100	120	140	160
Angulo DES 2.86° PFM	405'	506'	607'	708'	810'
FAF to MAPt 4.0 NM	3:00	2:24	2:00	1:43	1:30

DASA / SECCION AS-MAP