

Scale Skills

Fills with C Minor Pentatonic



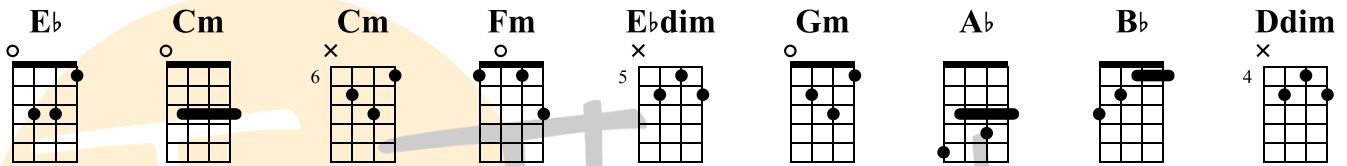
Tenthumbspro.com
For educational purposes only

Key: C minor/Eb major

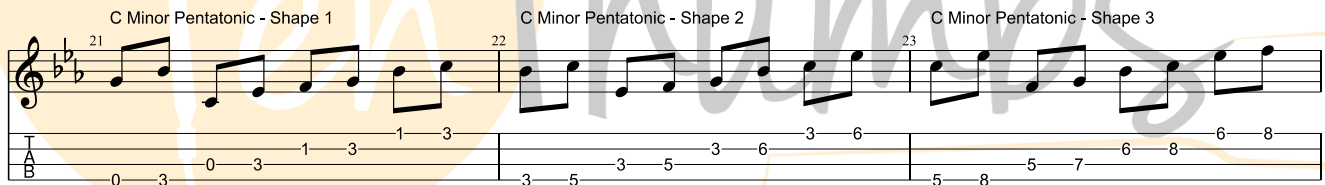
Harmony: Eb, Fm, Gm, Ab, Bb, Cm, Ddim

Video Tutorial: <https://www.youtube.com/watch?v=SA0yW5LOwDg>

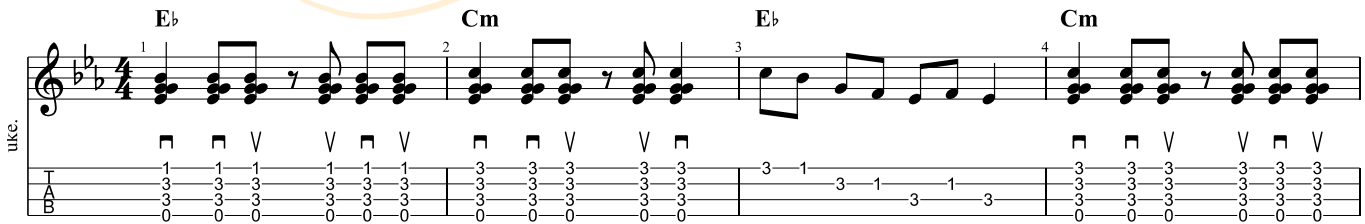
Chord in the keys of Eb and C minor:



Scales Shapes Used



Lick 1



Lick 2



Lick 3

Musical notation for Lick 3, measures 9-12. The key signature is B-flat major (two flats). The notation includes a treble clef, a bass clef, and a guitar fretboard diagram. Chords Eb and Cm are indicated above the staff. The guitar diagram shows fret numbers (1, 3, 0) and string numbers (1-6). A 'full' note is marked above measure 11, and a 'sl.' (slide) is marked above measure 12.

Lick 4

Musical notation for Lick 4, measures 13-16. The key signature is B-flat major (two flats). The notation includes a treble clef, a bass clef, and a guitar fretboard diagram. Chords Eb and Cm are indicated above the staff. The guitar diagram shows fret numbers (1, 3, 0) and string numbers (1-6). A triplet of eighth notes is marked with a '3' below measure 15.

Lick 5

Musical notation for Lick 5, measures 17-20. The key signature is B-flat major (two flats). The notation includes a treble clef, a bass clef, and a guitar fretboard diagram. Chords Eb and Cm are indicated above the staff. The guitar diagram shows fret numbers (1, 3, 0) and string numbers (1-6). Triplet markings are present above measures 19 and 20.

Take this lesson a step further

1. Compose a chord progression using any of the chords that you would like
2. Identify a measure where you would like to create a fill
3. Using the three shapes of the scale create a fill that is one measure
4. Want to take it further? Add lyrics and create a full song