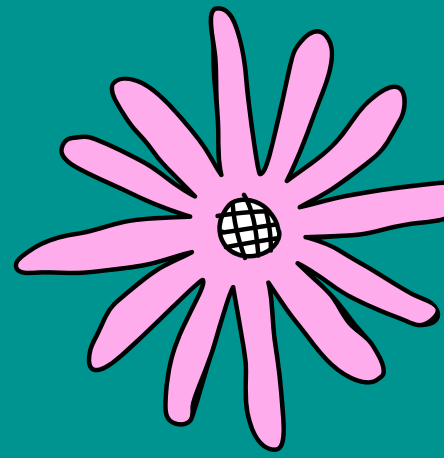




**FLR/TPE
RELATIONSHIP
NEGOTIATIONS**



THE BASIS OF THE FLR RELATIONSHIP WITH YOUR NEW MISTRESS/MASTER AND YOUR OWN GROWTH AS HIS/HER SUB/SLAVE DEMANDS COMPLETE HONESTY, RELAXED, AND FOCUSED ATTENTION TO ALL DETAILS REQUESTED. IF YOU ARE UNABLE TO WHOLEHEARTEDLY GIVE THIS YOUR FOCUSED ATTENTION, BE HONEST WITH YOUR WANTS/REQUIREMENTS, AND DO NOT BE UNTRUTHFUL TO YOURSELF AND YOUR DOM/DOMME.

Negotiation Styles:

Make sure you understand the style of consent and negotiation that you are involved in.

Opt-in Negotiation - means that only the activities discussed and agreed to are a part of play.

Opt-out Negotiation - means that anything is fair game except the hard limits or activities deemed off limits.

Consensual Non-Consent:

Is typically a relationship style, but some people do structure play within this type of structure.

This is where the person in authority makes the decisions and the person giving up the authority obeys, even if they don't want to.

Scene Details

WHO IS IN THE SCENE? OR PEOPLE?
WHEN WILL THE SCENES TAKE PLACE?

WHAT ROLES WILL THEY PLAY?
HOW LONG WILL OUR SCENES LAST?

WOULD OTHERS BE ALLOWED TO JOIN IN OUR SCENES?

WHERE WILL YOU LIKE THE SCENES TO TAKE PLACE? PLAY PARTY? PRIVATE
DUNGEON?
PRIVATE HOME?
RENTED SPACE/HOTEL?
OTHER PLACE?

Health & Relationship

This part of the negotiation checklist covers any health concerns, relationship details and the need for aftercare.

DO YOU HAVE ANY HEALTH CONCERNS THAT COULD AFFECT OUR SCENES?

IS THERE ANYTHING THAT SHOULD BE AVOIDED?

WHAT SHOULD BE DONE IF THERE IS AN EMERGENCY?

WILL YOU HAVE NEEDED MEDICATIONS (INHALER, FOR EXAMPLE) AND WHAT SHOULD MISTRESS/MASTER DO IF YOU NEED THEM?

Health & Relationship

This part of the negotiation checklist covers any health concerns, relationship details and the need for aftercare.

DO YOU NEED AFTERCARE?

WHAT TYPE OF AFTERCARE? BLANKET, WATER, SOMETHING TO EAT, CUDDLES, ETC.

HOW LONG?

IS THERE SOMEONE ELSE YOU WOULD RATHER PROVIDE YOU WITH AFTERCARE EXCEPT MISTRESS/MASTER?

Limits & Safewords

This section of the negotiation checklist covers limits (hard and soft), safewords, pushing limits and the sobriety of the participants.

- WILL YOU BE USING SAFEWORDS OR PLAIN LANGUAGE?
- IF YOU'RE USING SAFEWORDS, WHAT ARE THEY?

WHAT DO THE SAFEWORDS MEAN TO YOU?

WILL YOU BE ENGAGING IN RESISTANCE PLAY?

Limits & Safewords

This section of the negotiation checklist covers limits (hard and soft), safewords, pushing limits and the sobriety of the participants.

- WHAT ARE YOUR HARD LIMITS (IN GENERAL)?

WILL YOU BE PUSHING SOFT LIMITS?

WHAT WILL THAT LOOK LIKE?

Limits & Safewords

This section of the negotiation checklist covers limits (hard and soft), safewords, pushing limits and the sobriety of the participants.

ARE THERE ANY WARNING SIGNS OF BAD EMOTIONAL SPACE?

UNDER WHAT CIRCUMSTANCES SHOULD THE SCENES STOP IF THINGS DON'T GO WELL?

WILL ALL PARTIES BE SOBER?

Limits & Safewords

This section of the negotiation checklist covers limits (hard and soft), safewords, pushing limits and the sobriety of the participants.

IS SOBRIETY IMPORTANT FOR OUR SCENES?

IF NOT, WHAT ARE ACCEPTABLE INTOXICATION LEVELS FOR EACH PERSON IN THE SCENES?

FOR CLARITY, LIST YOUR SAFEWORDS AGAIN

Scene Planning

This section covers the details of the play being planned.

WHAT TYPE OF SCENE WILL YOU BE DOING? BONDAGE, IMPACT, SENSATION, CHASTITY, SISSIFICATION, PAIN PLAY, GENITORTURE, ETC

ARE MARKS PERMITTED?

NO MARKS?

LOTS OF MARKS

MARKS ONLY WHERE THEY CAN'T BE SEEN BY CLOTHING/SWIMSUIT/OTHER?

ONLY TEMPORARY MARKS?

WILL YOU BE ENGAGING IN HUMILIATION OR DEGRADATION PLAY?

ARE YOU INTERESTED IN VERBAL HUMILIATION?

Scene Planning

This section covers the details of the play being planned.

WHAT HUMILIATING ACTS ARE YOU INTERESTED IN?

WHAT IS OFF LIMITS?

WHAT PLAY STYLE DO YOU ENGAGE IN?

LIGHT AND FUN?

SERIOUS?

LOTS OF LAUGHTER?

HIGH PROTOCOL?

CRYING?

Scene Planning

This section covers the details of the play being planned.

WHAT DO YOU ENJOY MOST?

WHAT ARE YOUR NEEDS IN A SCENE?

WHAT ARE YOU HOPING TO GET OUT OF THE SCENE?

LIST YOUR TYPICAL PLAY PLANNING

DON'T FORGET!

Negotiation is Ongoing

I said it once, and I'll say it again. Negotiation is an ongoing thing.

In part because as you begin to try things, you'll learn what works for you and what doesn't.

But also, over time you'll change, want to try new things, or want to stop doing old things.

If you think the conversation you have at the beginning of your D/s relationship or BDSM scene arrangement is the end of it, you're going to get stuck very quickly.

You can't change, grow, or adapt if you're not willing to keep the conversation going.

Date

Dominant's Signature

To Accepted Submissive/Slaves:

Run from the “Dominant” who says they don’t need to hear what the submissive/slave wants, because BDSM is all about serving and pleasing the Dom. RUN!! Both partners are involved in BDSM negotiations. It’s the only way to come to a consensual agreement about what you’ll do, what you won’t do, and what you want to try. At the same time, neither of you should tell the other, “Whatever you want is fine with me.” That’s a recipe for disaster and potential harm later. BDSM and M/s is participatory, and it begins with negotiating the dynamic.