



LAS VEGAS HALTER TOP

Sizes 18-34 with cup sizes A-H

5/8 inch (in) (1.5 cm) seam allowances are included on all pattern pieces.

SIZE 18-34 PATTERN SIZE KEY

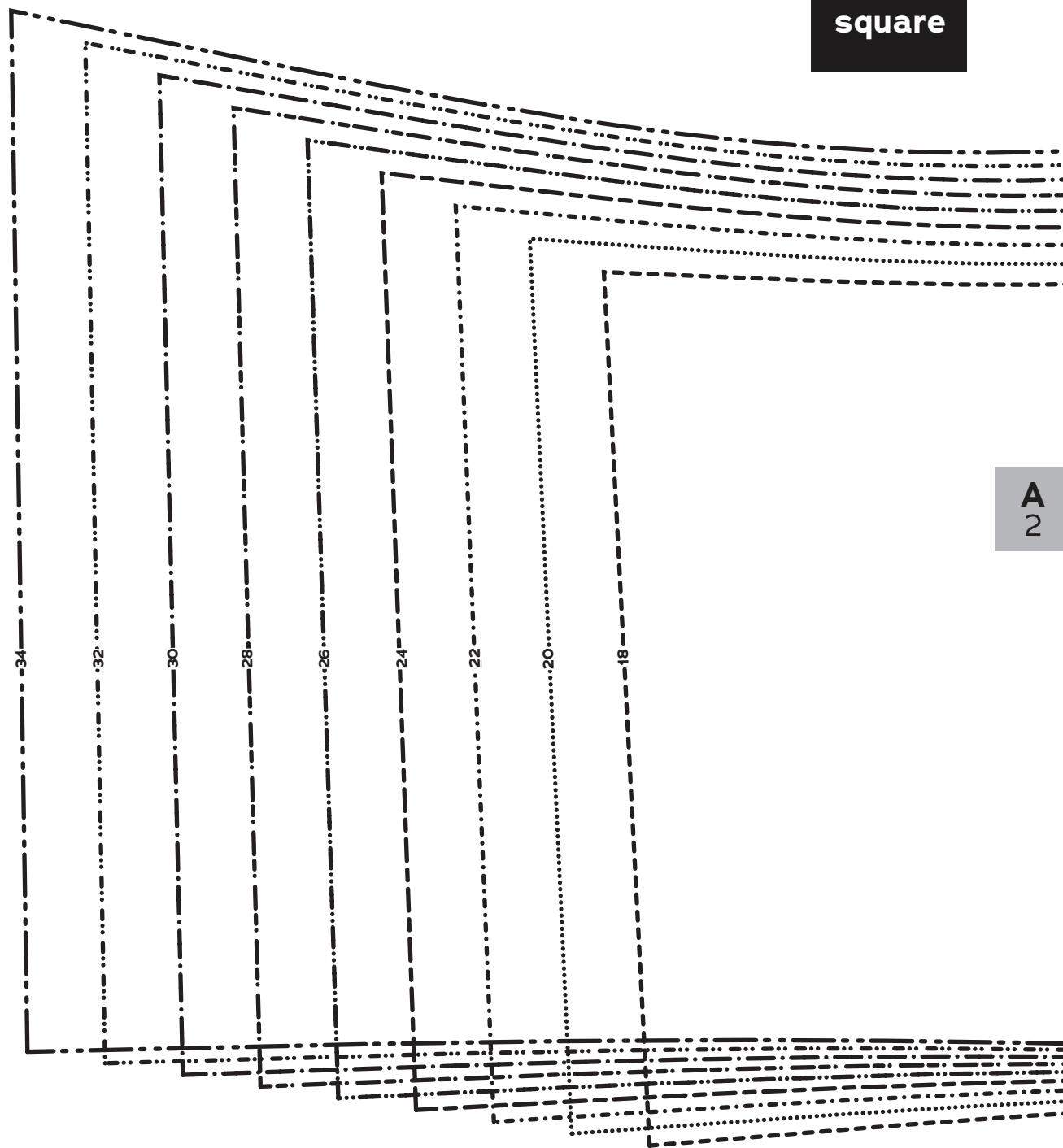
- 18 - - - - -
- 20 ·····
- 22 - · - · - ·
- 24 - - - - -
- 26 ·····
- 28 - · - · - ·
- 30 - - - - -
- 32 ·····
- 34 - - - - -

SYMBOL KEY

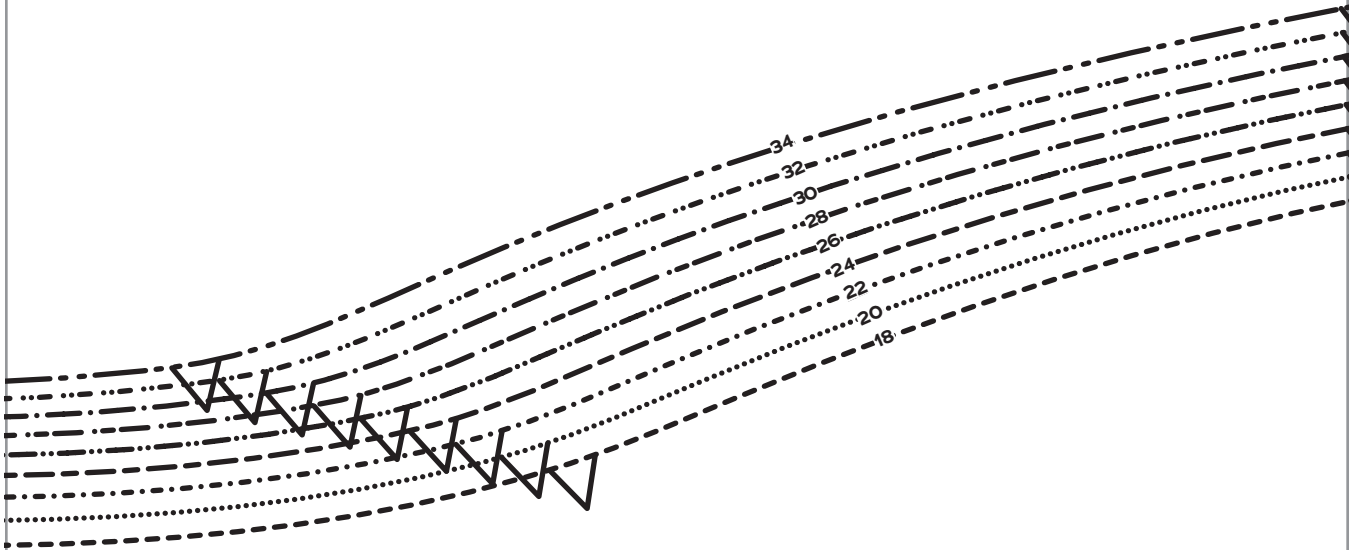
grainline arrow



match point/
placement mark



A
2



**LAS
VEGAS
HALTER
TOP**

SIZES 18-34

2

Midriff
Front

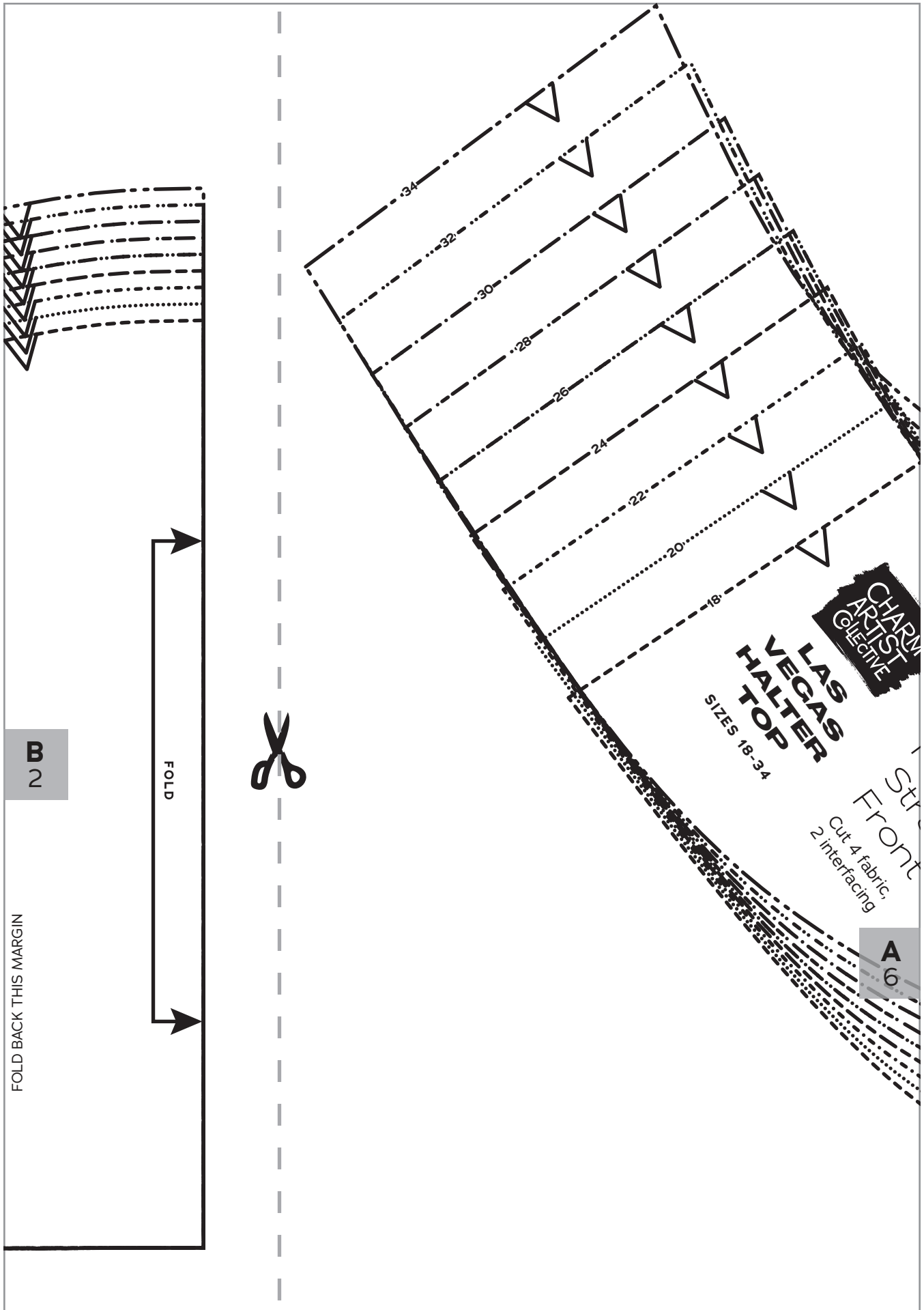
Cut 1 fabric on fold,
1 lining on fold

A
2

B
2

FOLD BACK THIS MARGIN





FOLD BACK THIS MARGIN

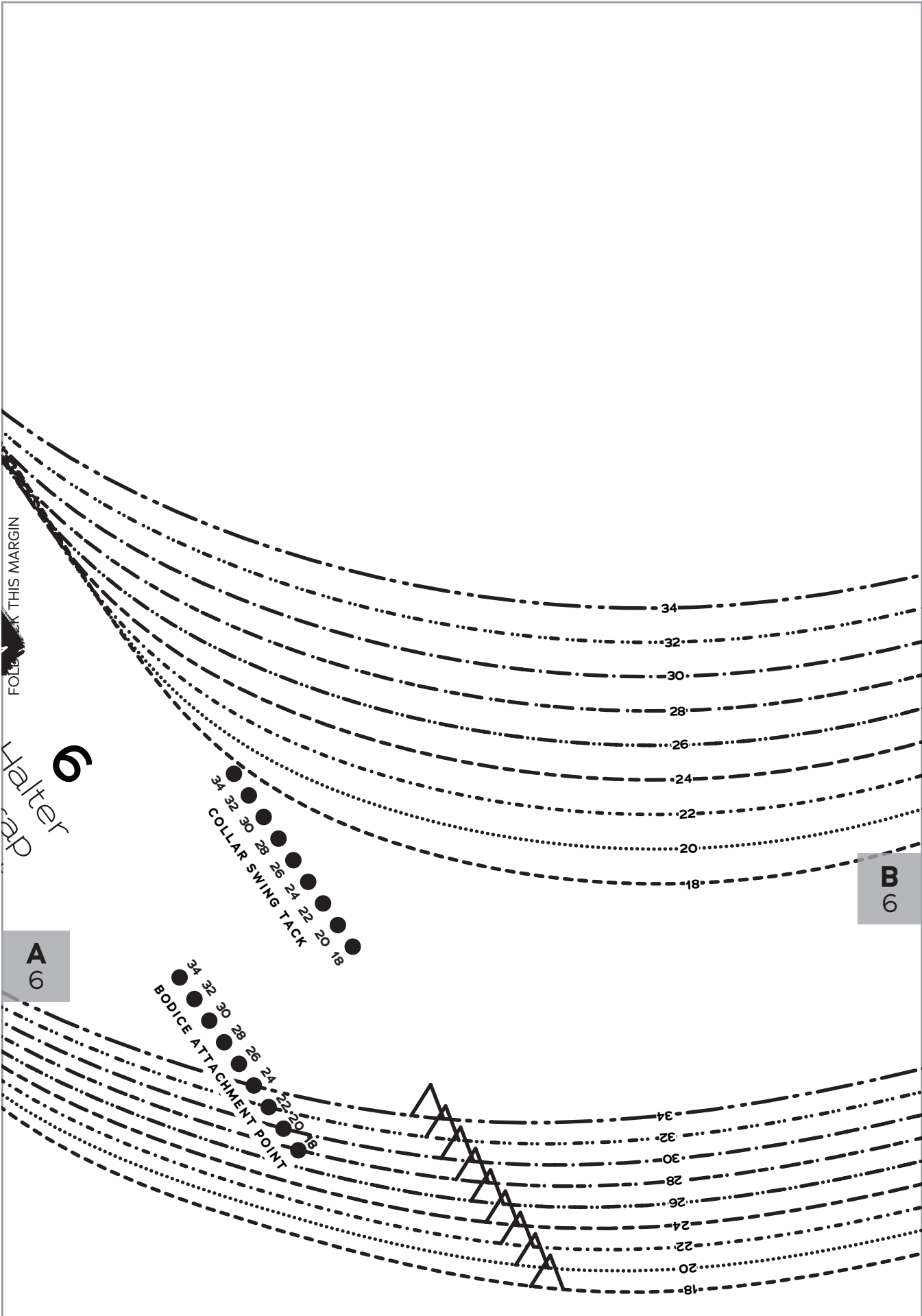
B
2

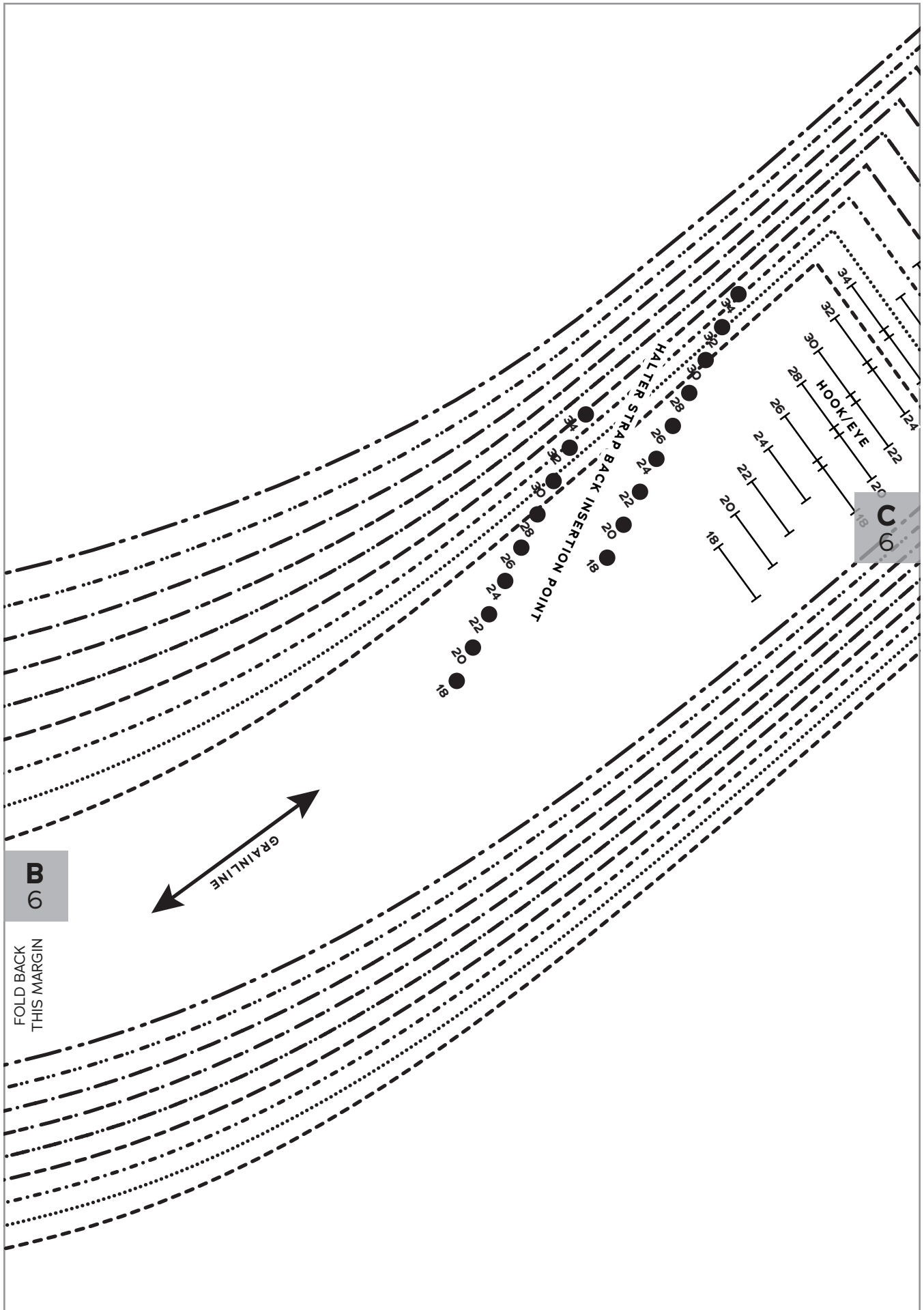
FOLD

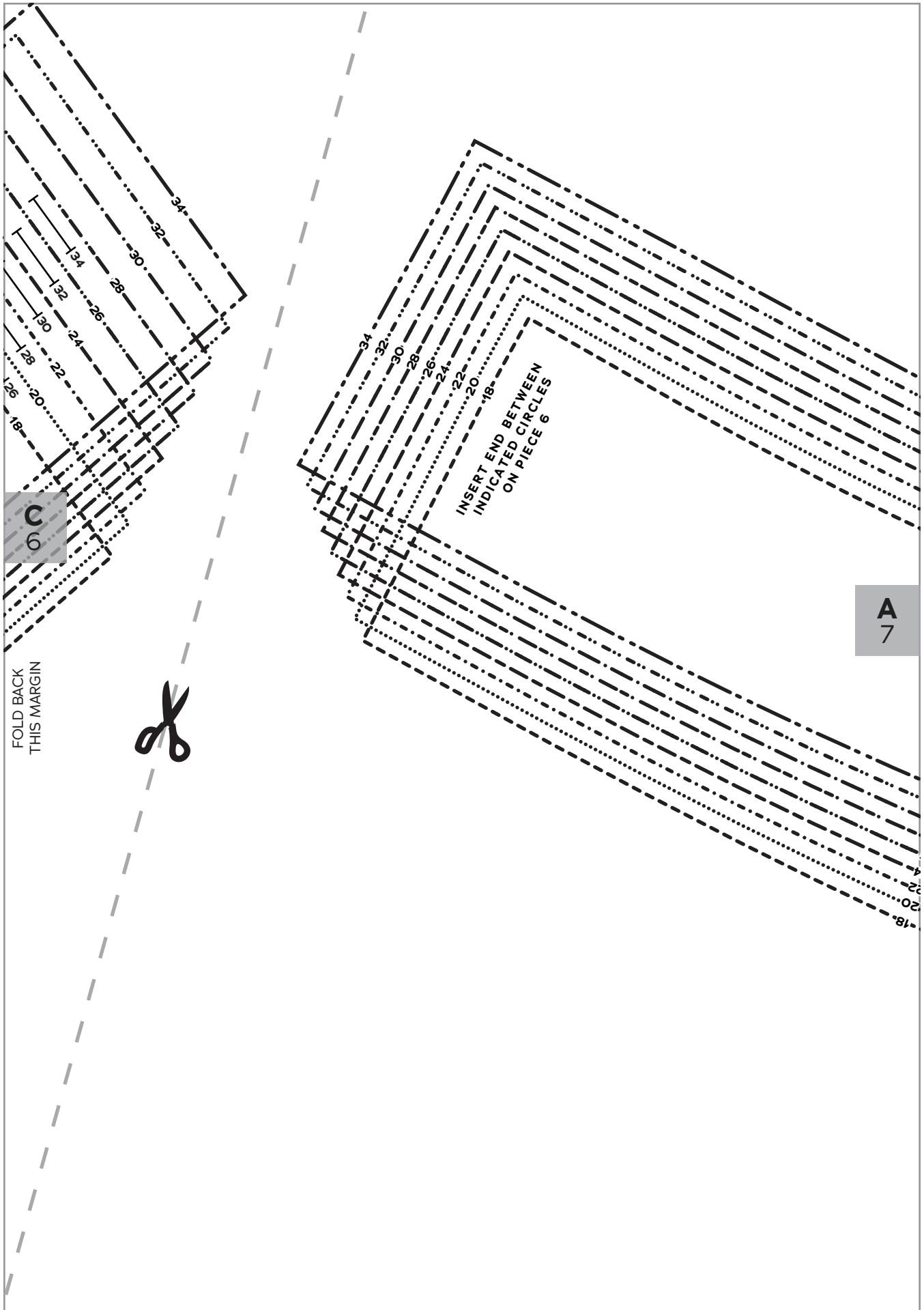


CHARM ARTISTS COLLECTIVE
LAS VEGAS HALTER TOP
 SIZES 18-34
 Front
 Cut 4 fabric,
 2 interfacing

A
6





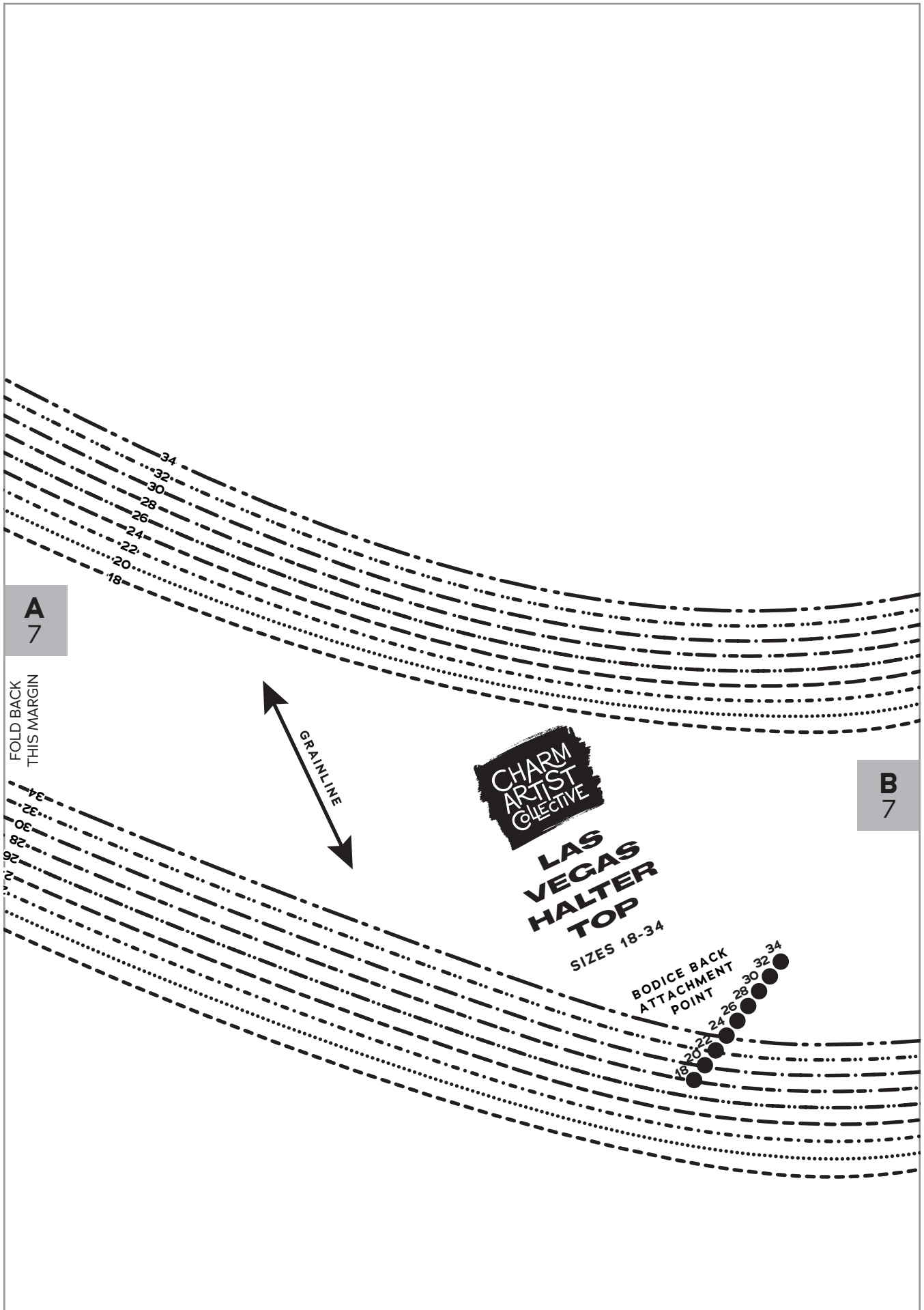


FOLD BACK
THIS MARGIN



INSERT END BETWEEN
INDICATED CIRCLES
ON PIECE 6

A
7



A
7

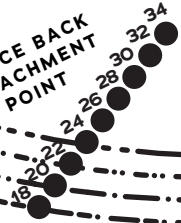
FOLD BACK
THIS MARGIN



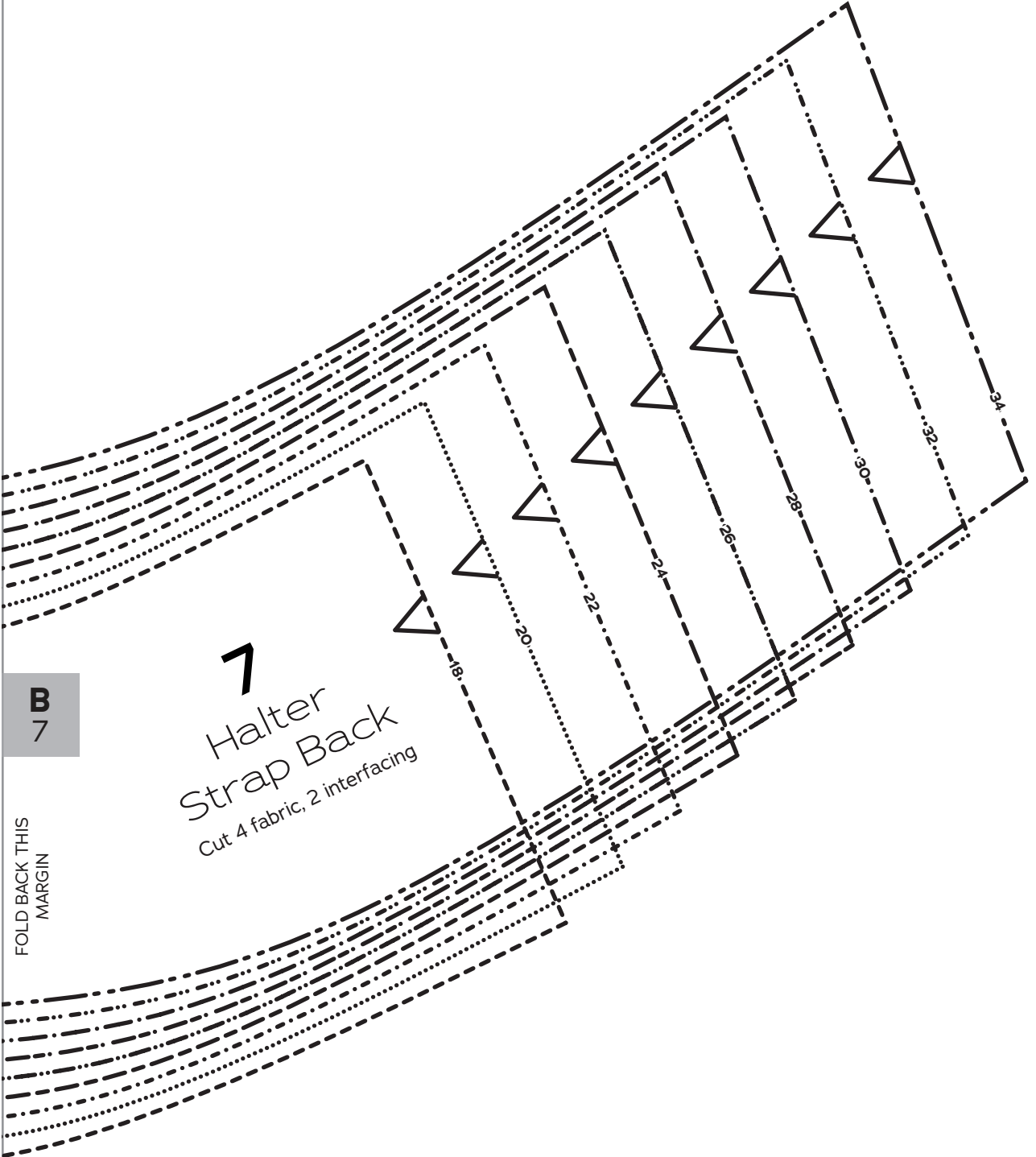
CHARM
ARTIST
COLLECTIVE

LAS
VEGAS
HALTER
TOP
SIZES 18-34

BODICE BACK
ATTACHMENT
POINT



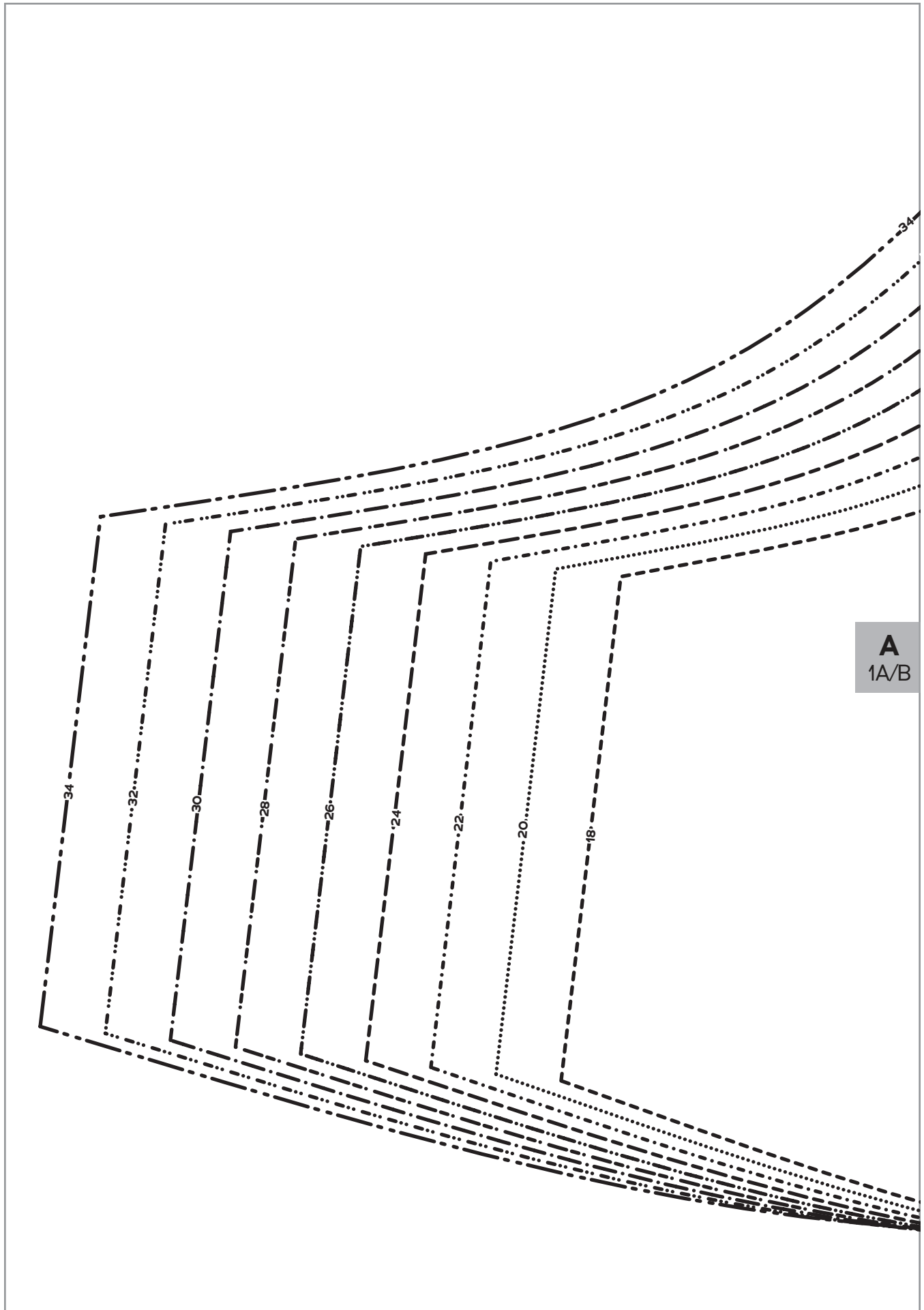
B
7



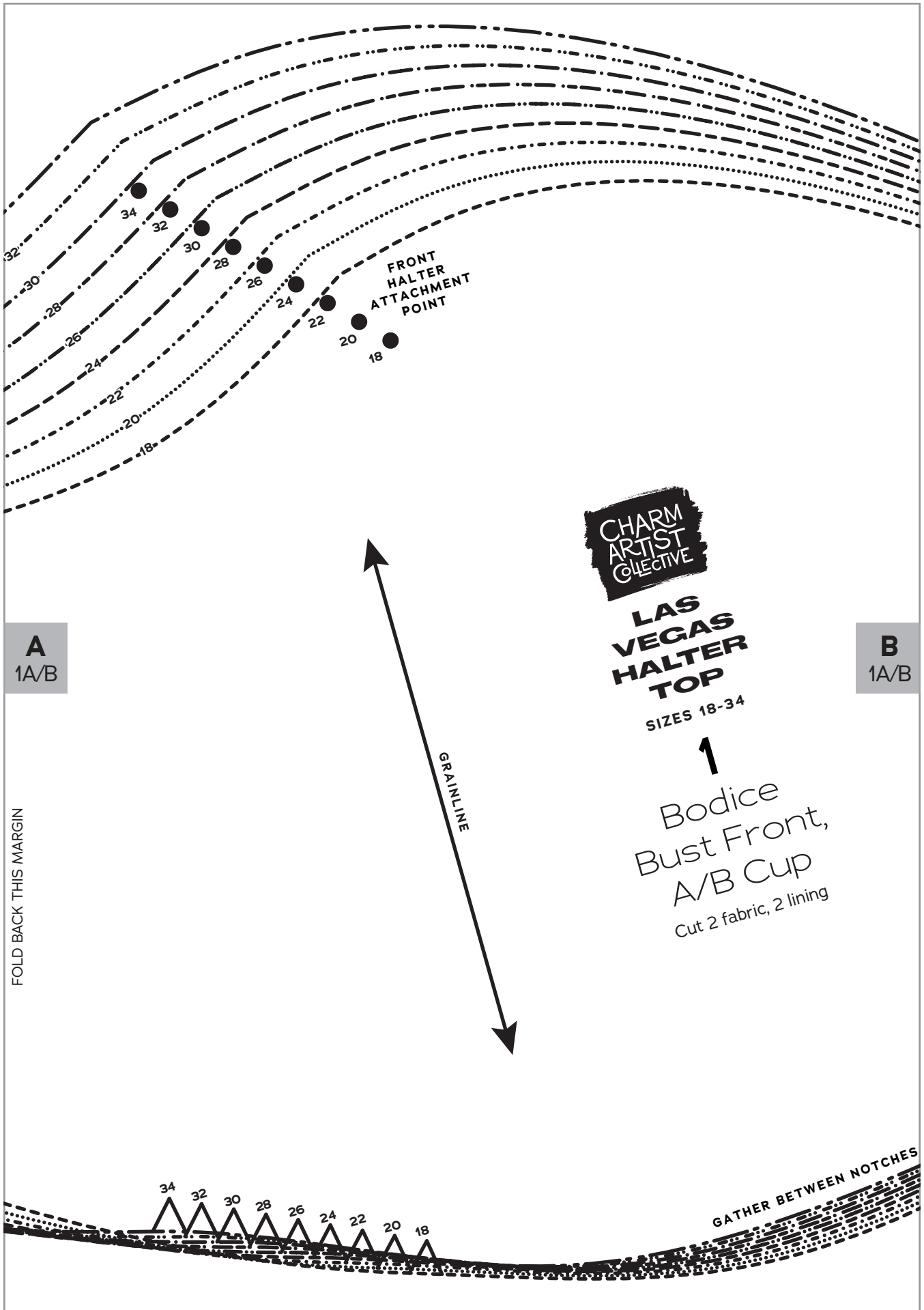
B
7

7
Halter
Strap Back
Cut 4 fabric, 2 interfacing

FOLD BACK THIS
MARGIN



A
1A/B



A
1A/B

B
1A/B



LAS VEGAS HALTER TOP

SIZES 18-34

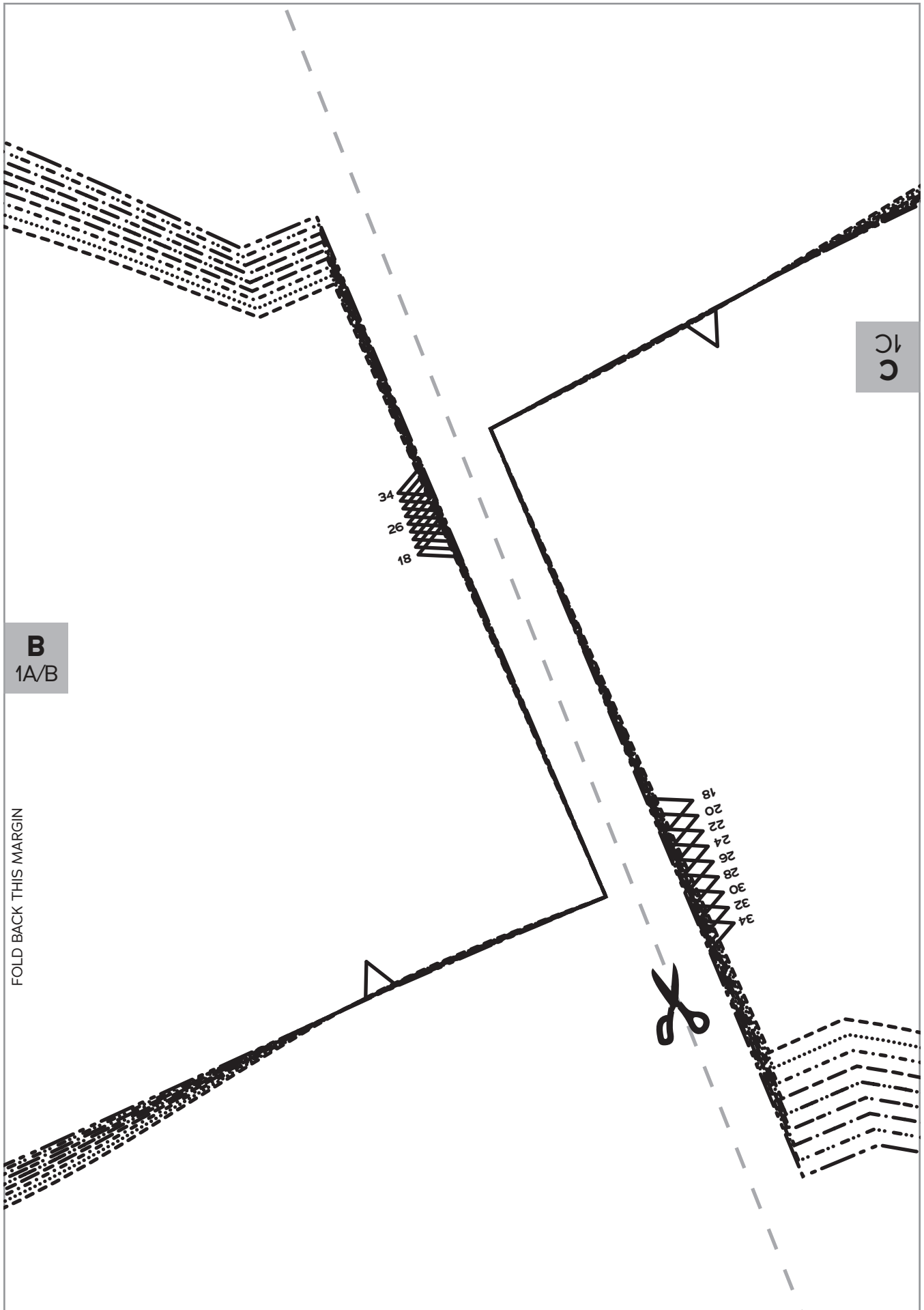
1

Bodice
Bust Front,
A/B Cup
Cut 2 fabric, 2 lining

FOLD BACK THIS MARGIN

GRAINLINE

GATHER BETWEEN NOTCHES

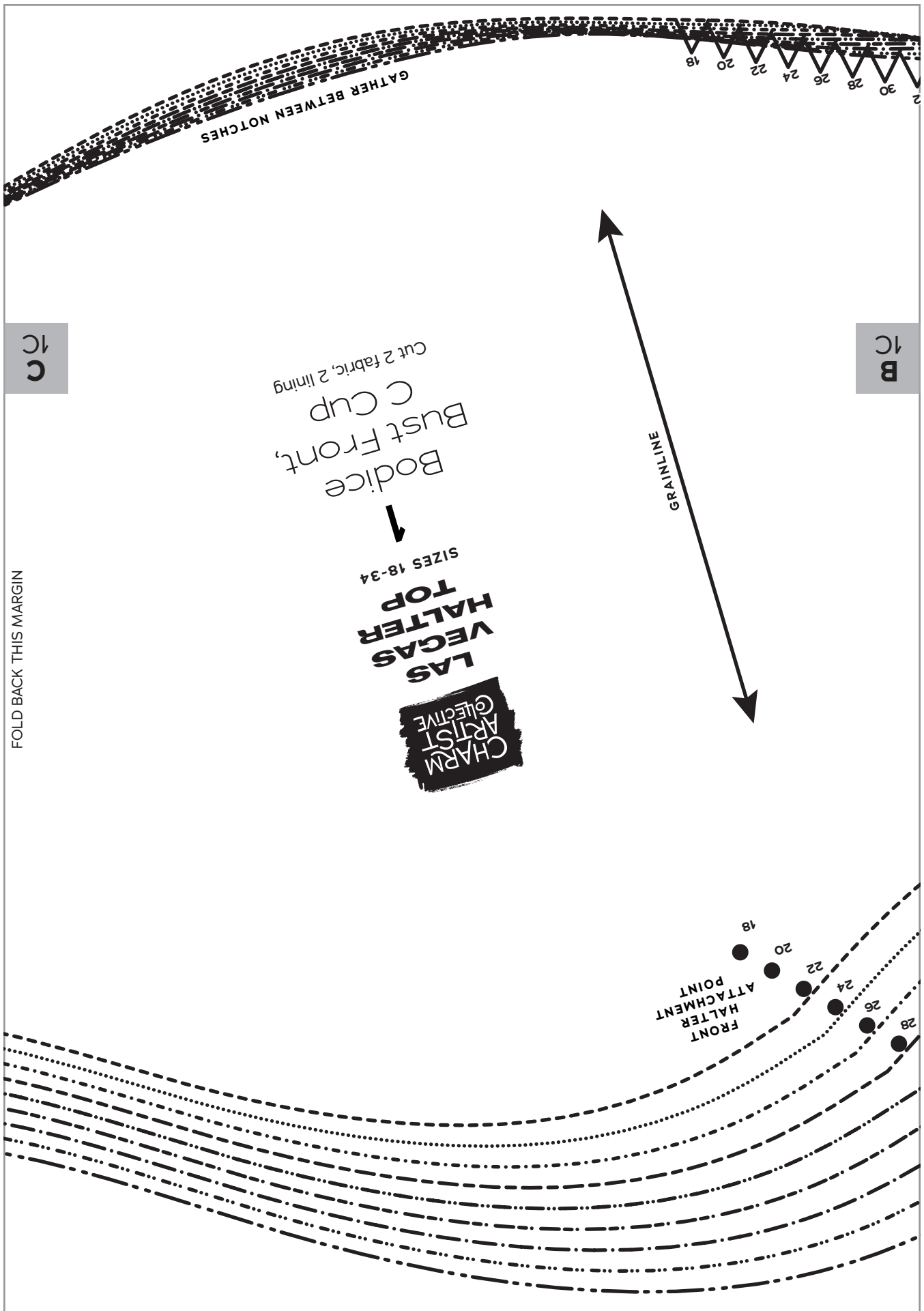


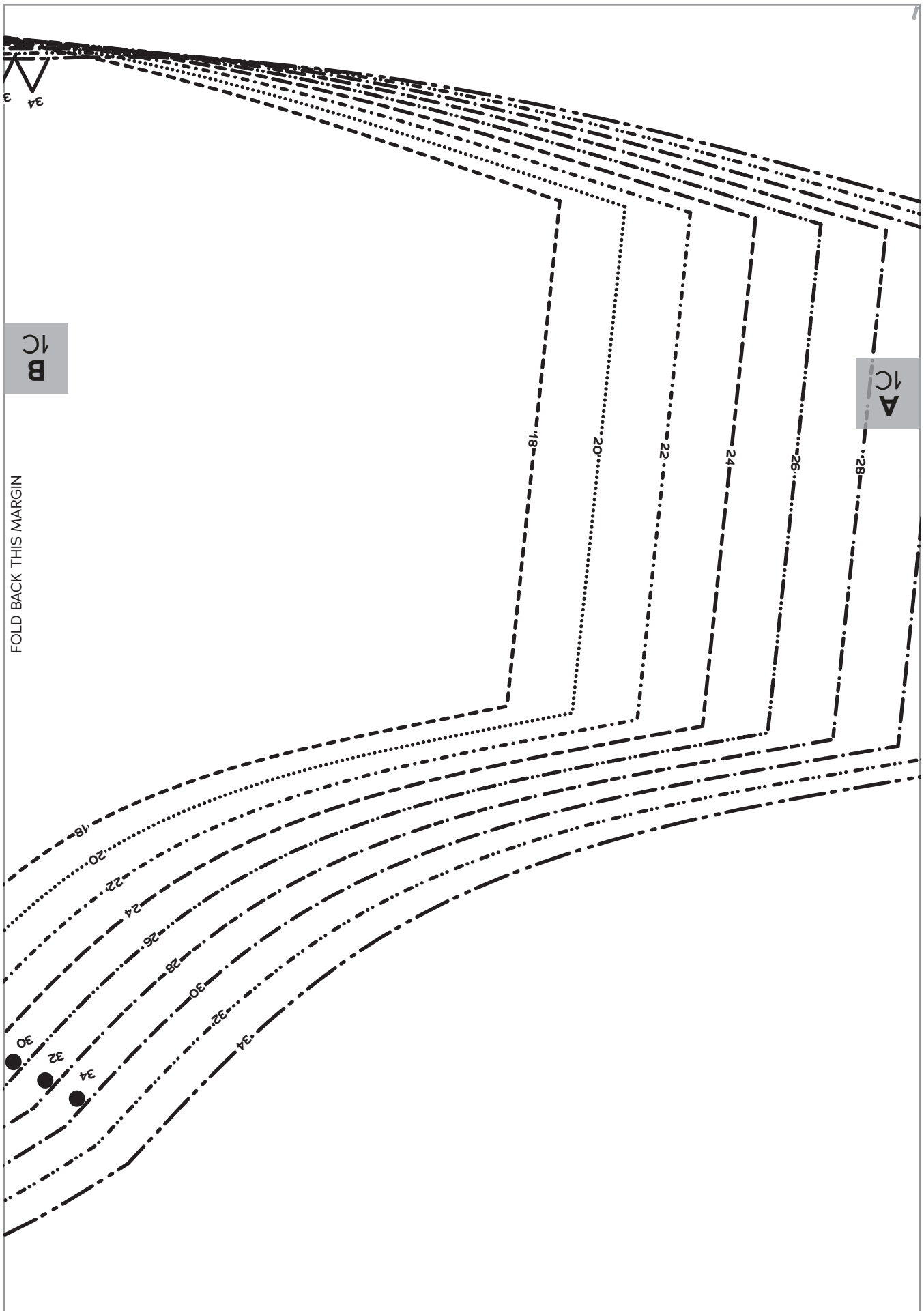
B
1A/B

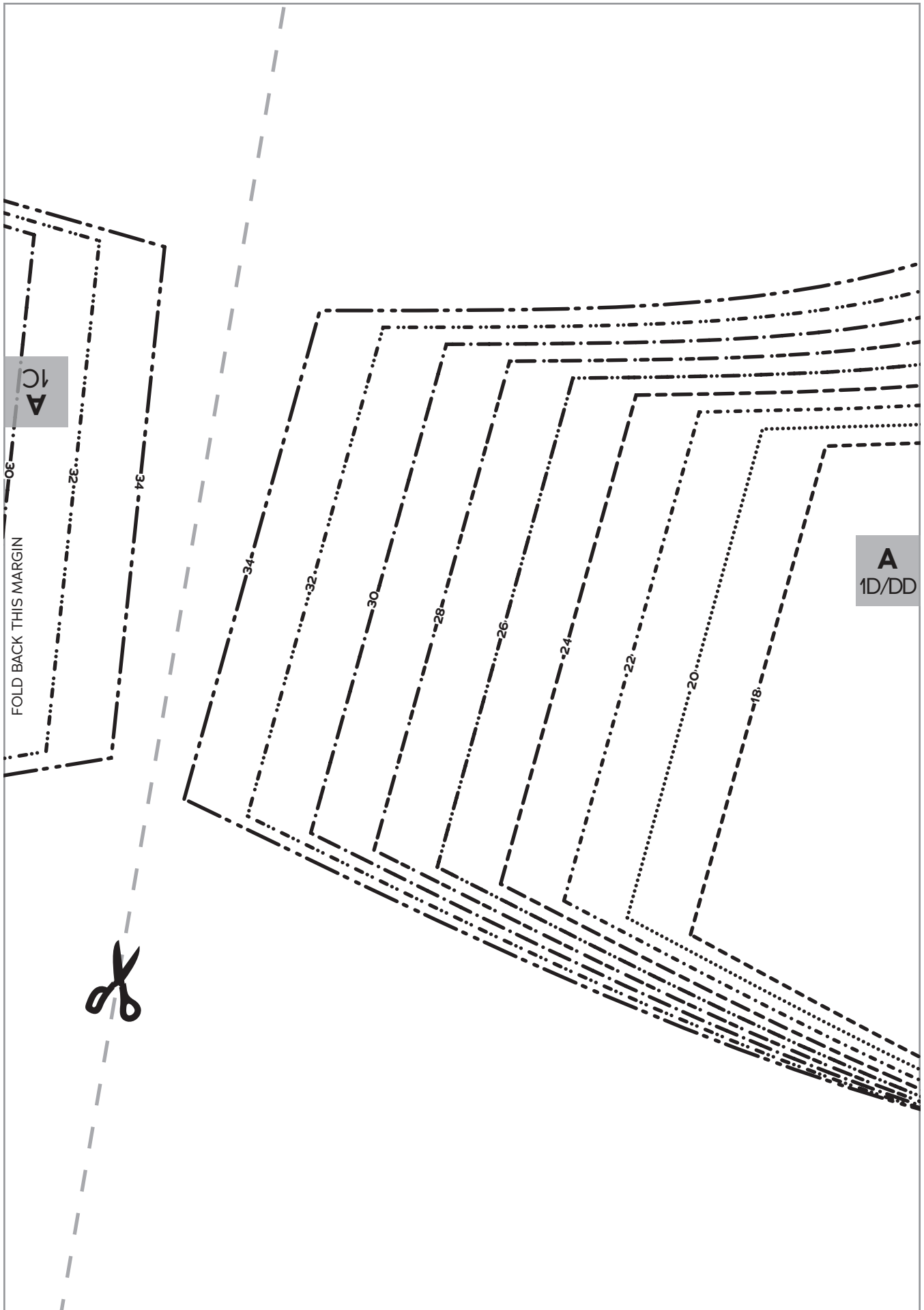
C
1C

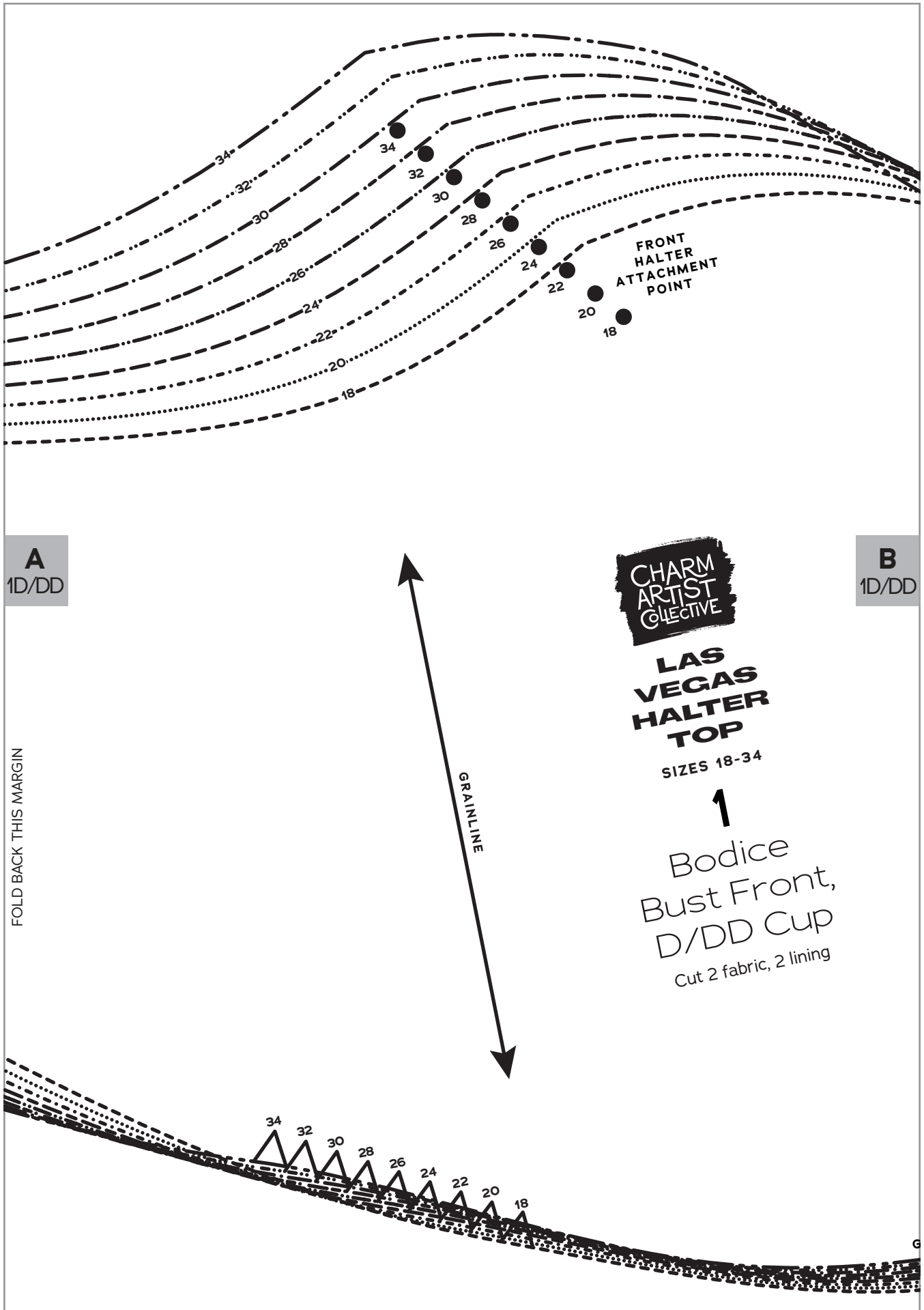
FOLD BACK THIS MARGIN







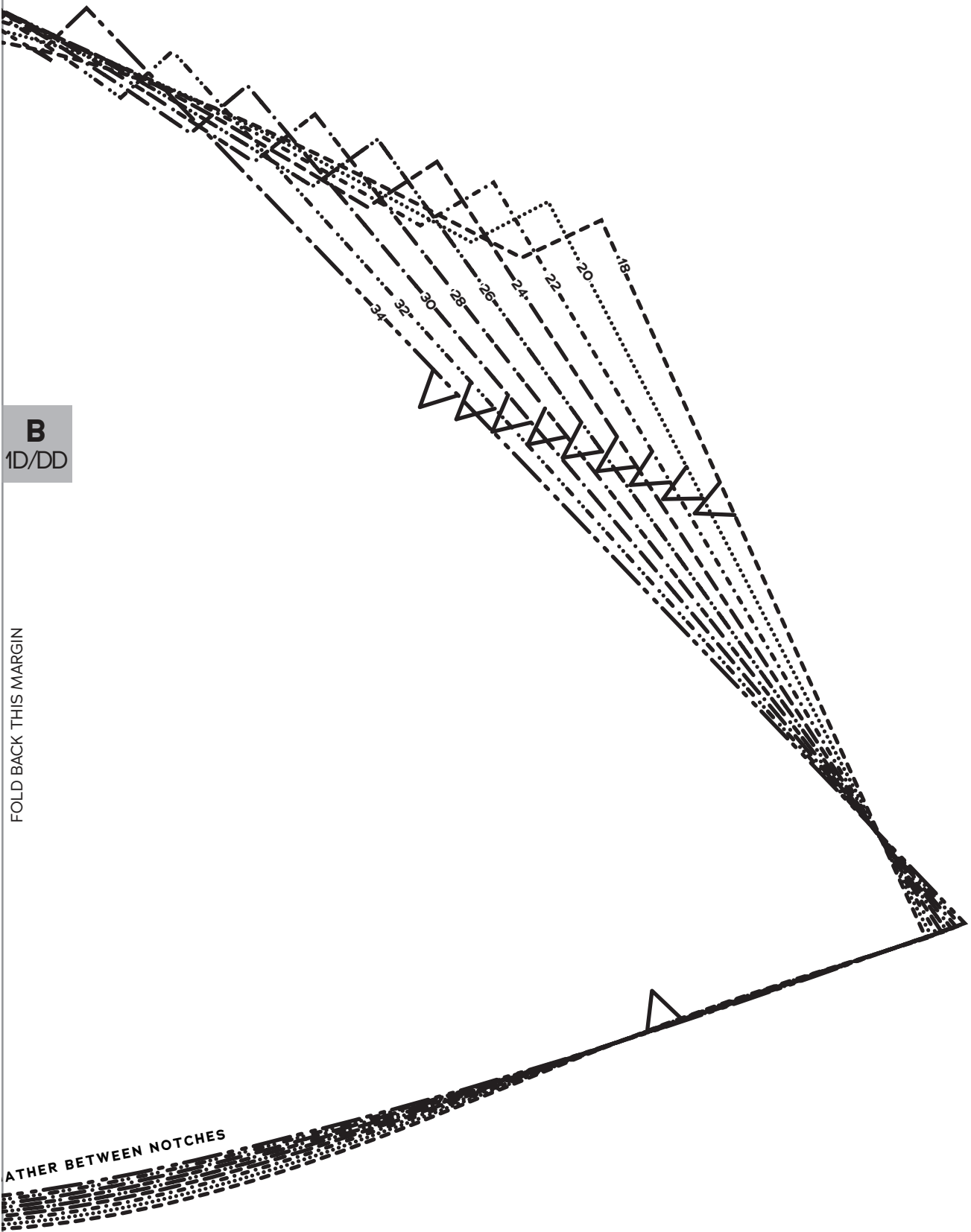


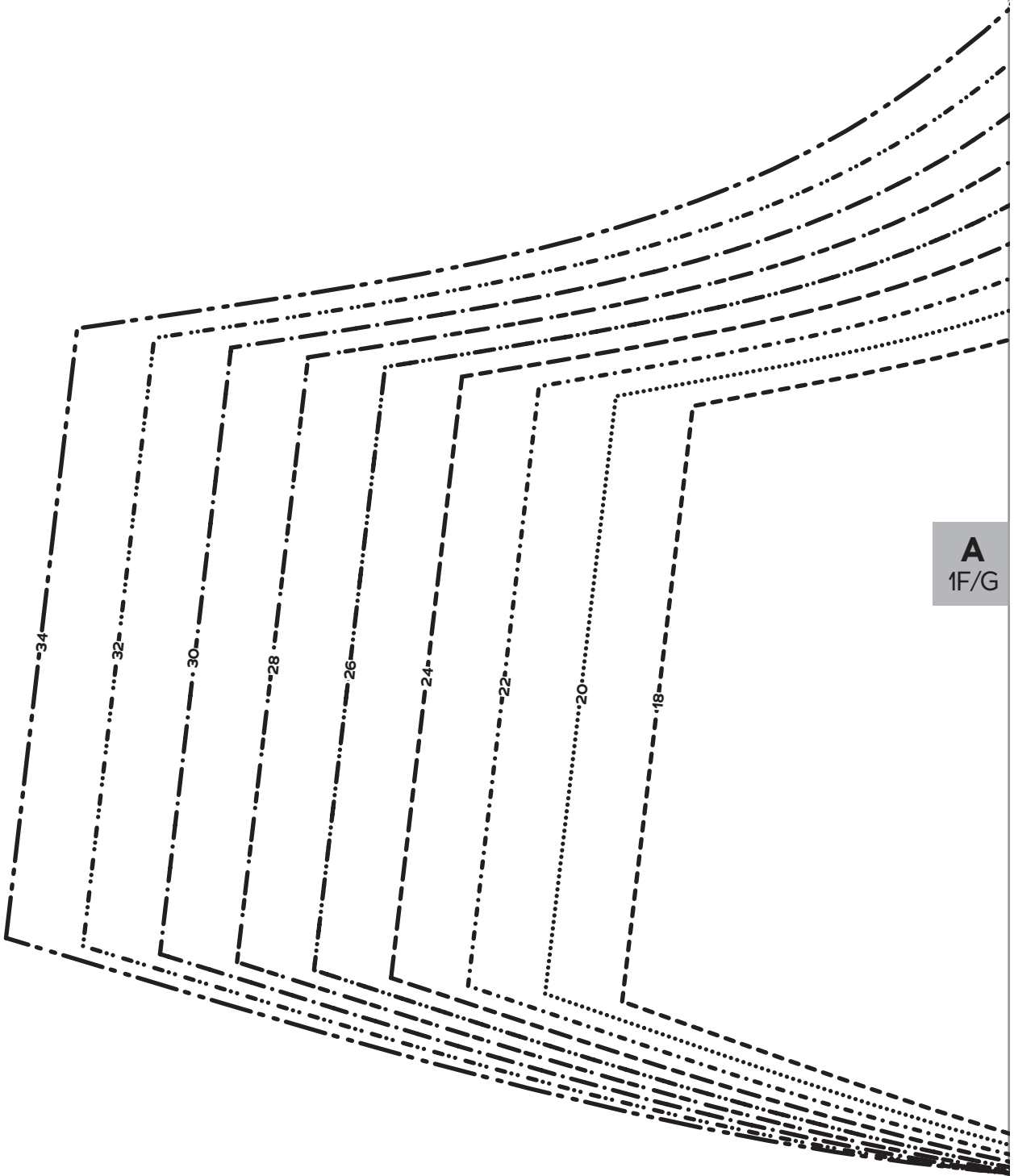


B
1D/DD

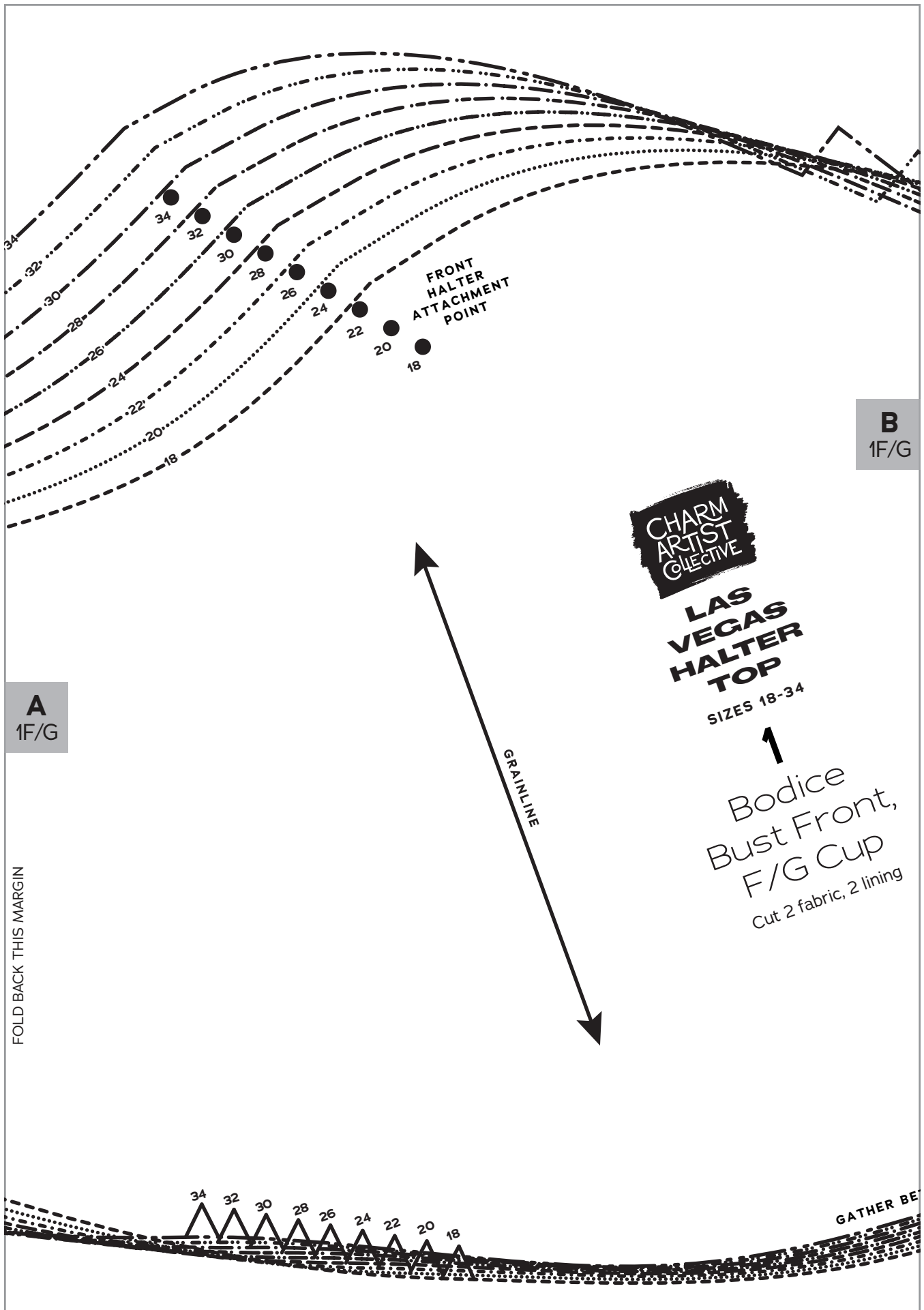
FOLD BACK THIS MARGIN

ATHER BETWEEN NOTCHES





A
1F/G



A
1F/G

B
1F/G

**CHARM
ARTIST
COLLECTIVE**

**LAS
VEGAS
HALTER
TOP**

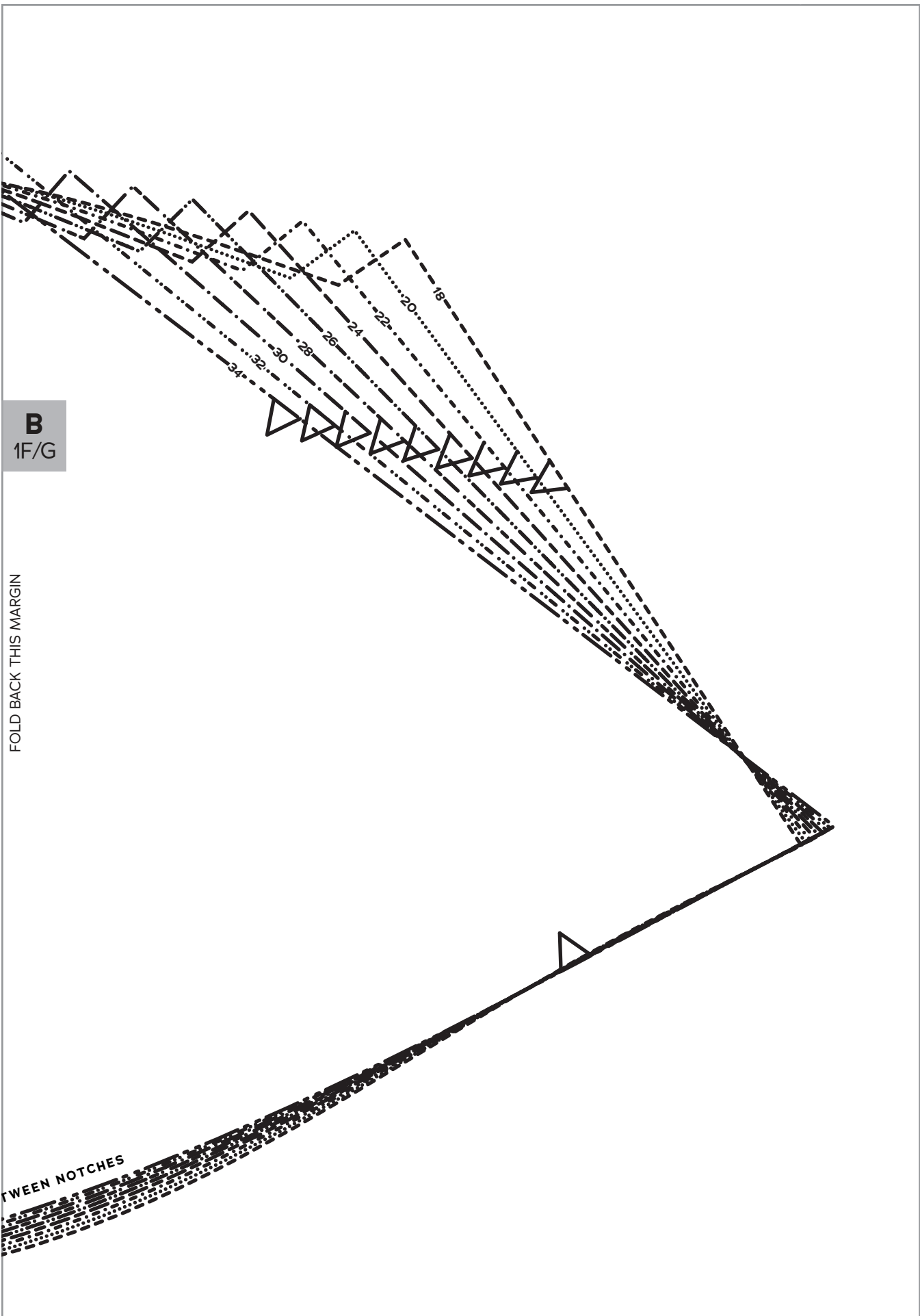
SIZES 18-34

↑
Bodice
Bust Front,
F/G Cup
Cut 2 fabric, 2 lining

FOLD BACK THIS MARGIN

GRAINLINE

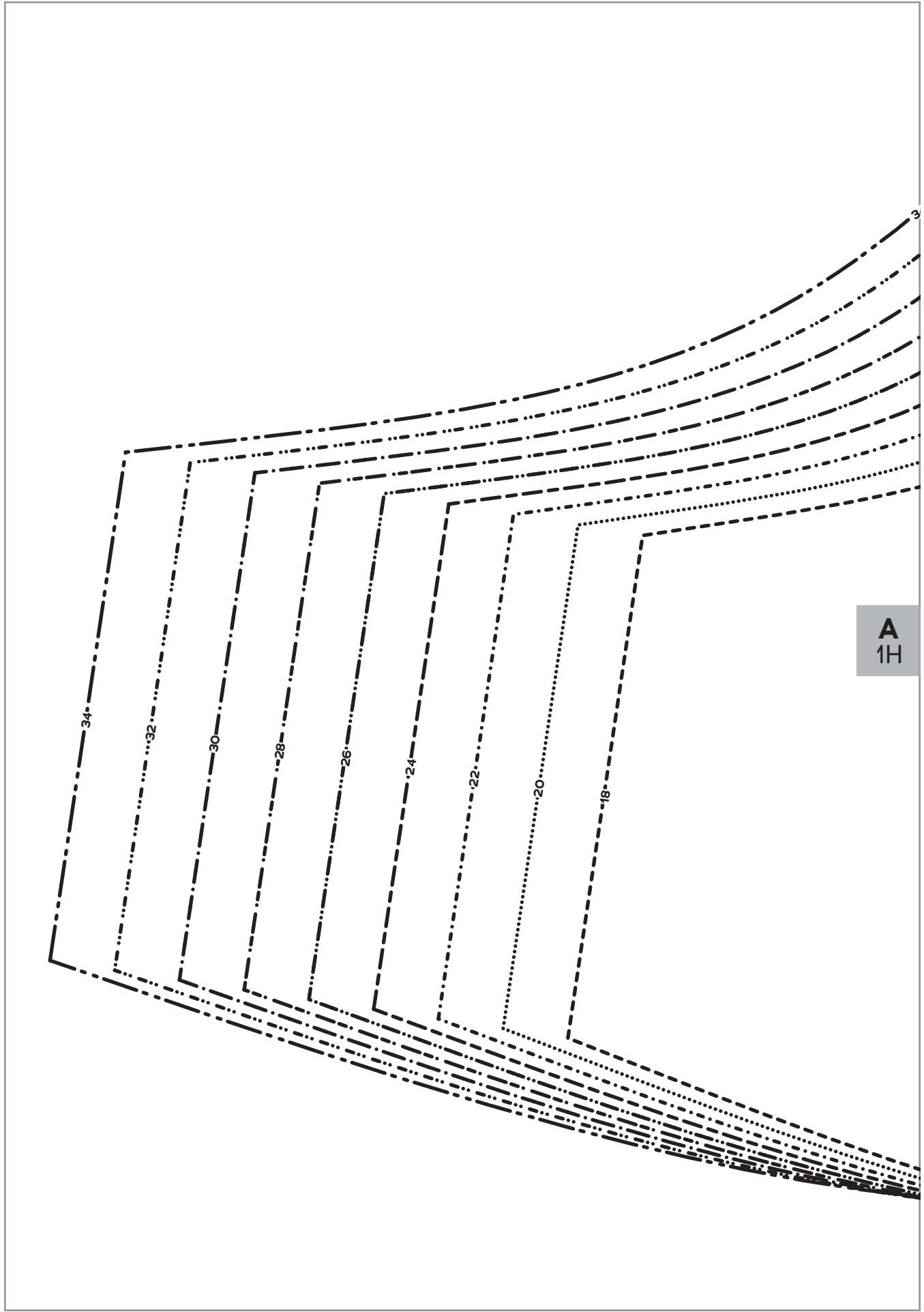
GATHER BE



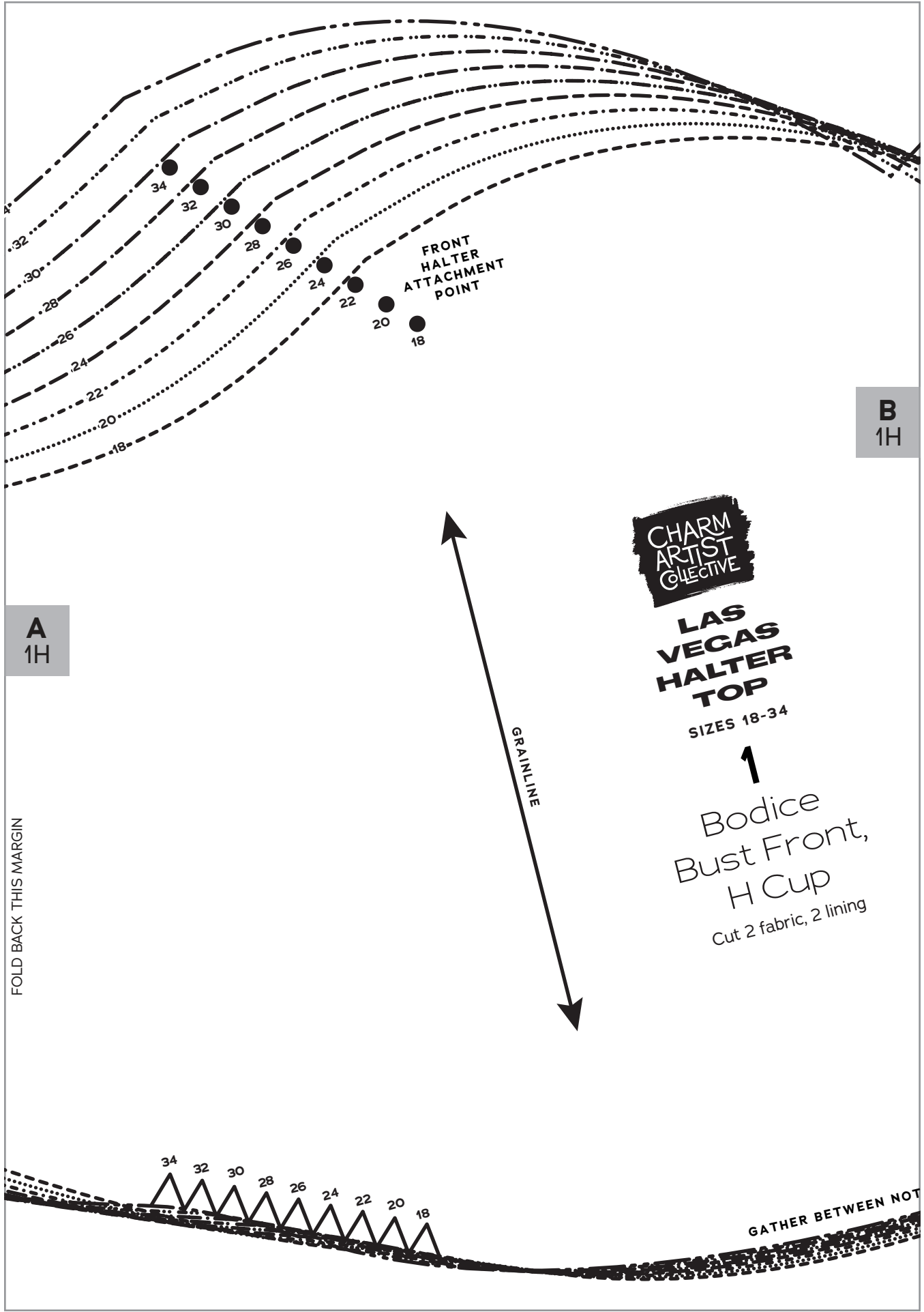
B
1F/G

FOLD BACK THIS MARGIN

TWEEN NOTCHES



A
1H



A
1H

B
1H



LAS VEGAS HALTER TOP

SIZES 18-34

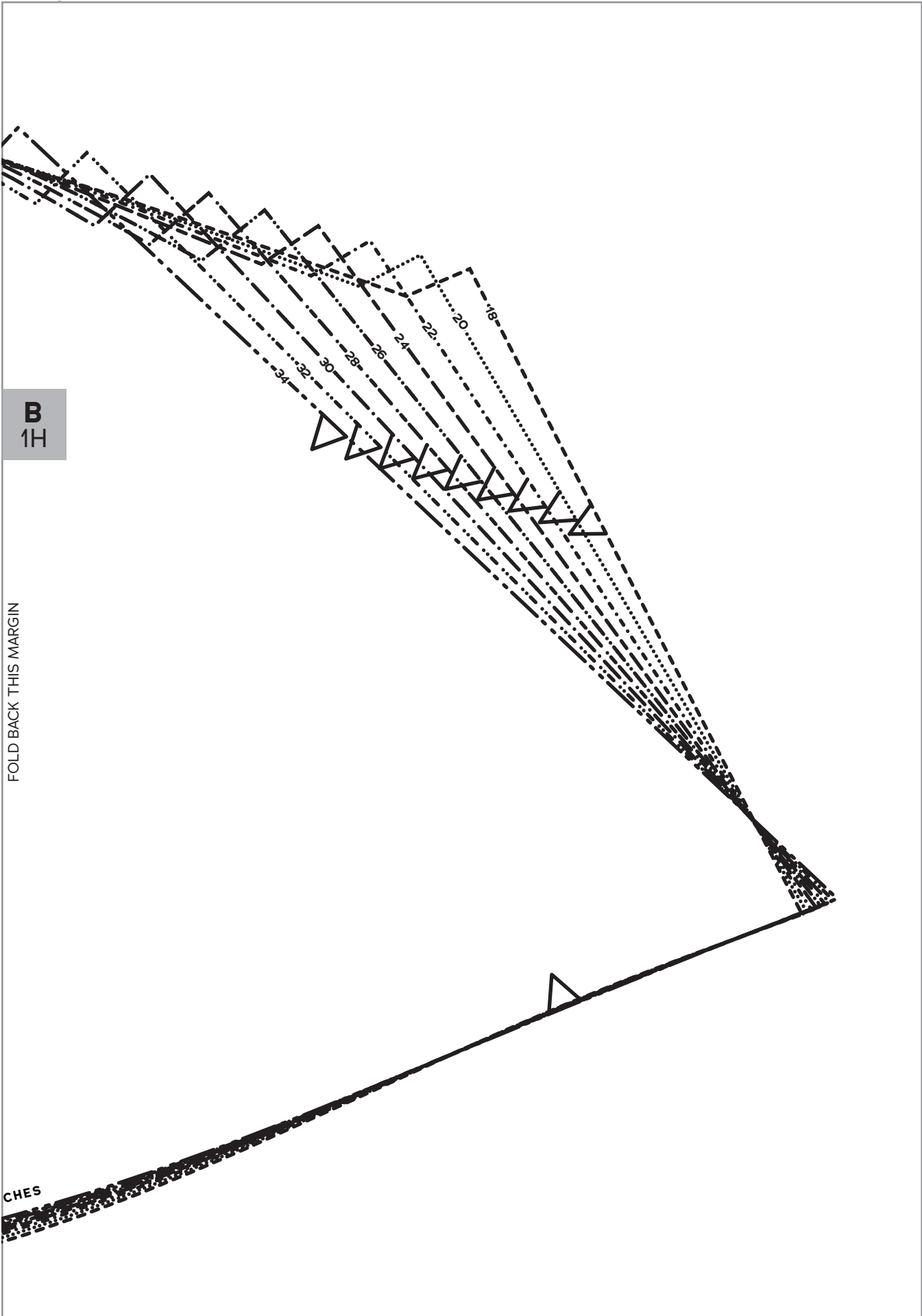


Bodice
Bust Front,
H Cup
Cut 2 fabric, 2 lining

FOLD BACK THIS MARGIN

GRAINLINE

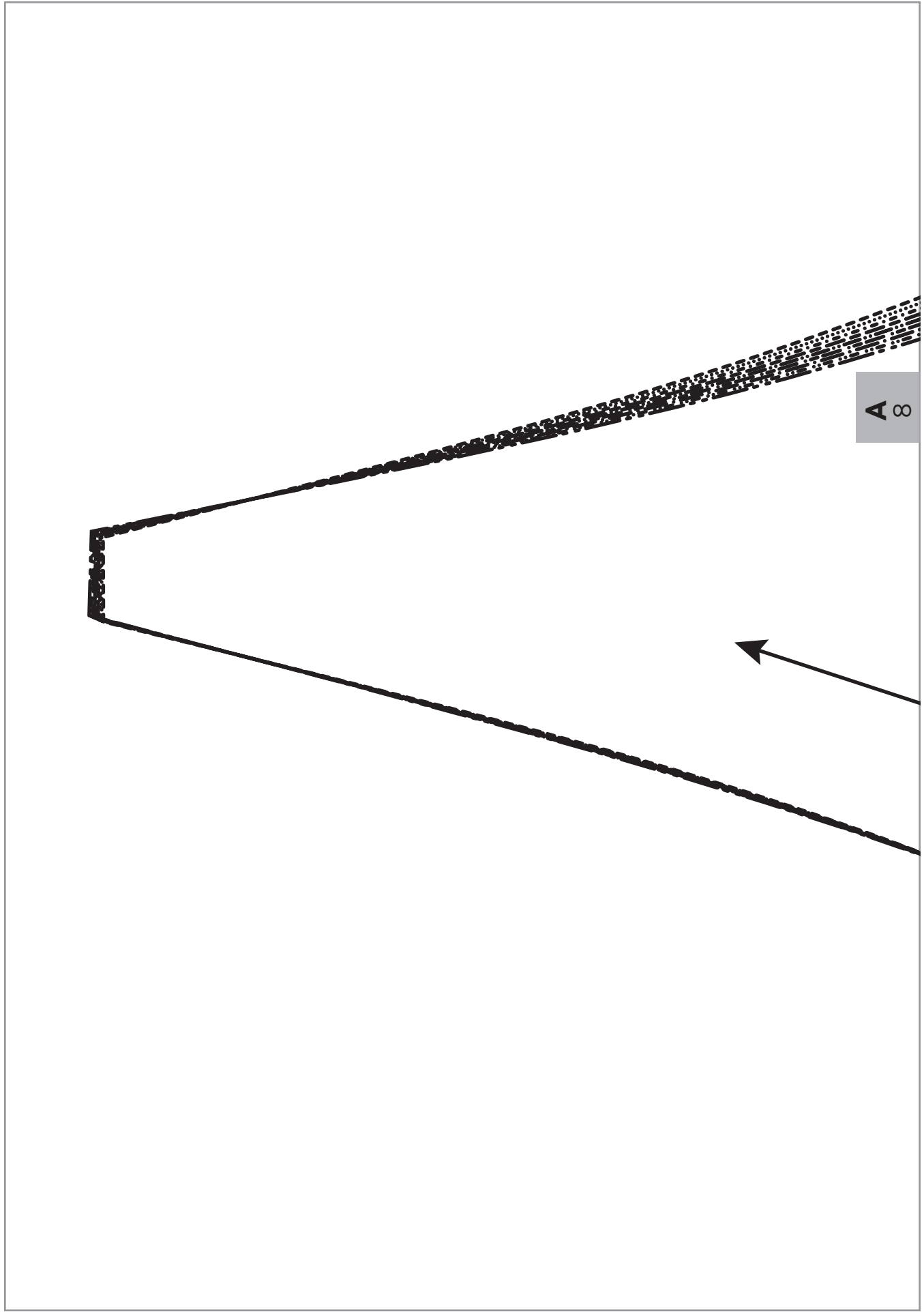
GATHER BETWEEN NOT



B
1H

FOLD BACK THIS MARGIN

CHES



A 8

A 8



LAS VEGAS HALTER TOP

SIZES 18-34

8

Collar

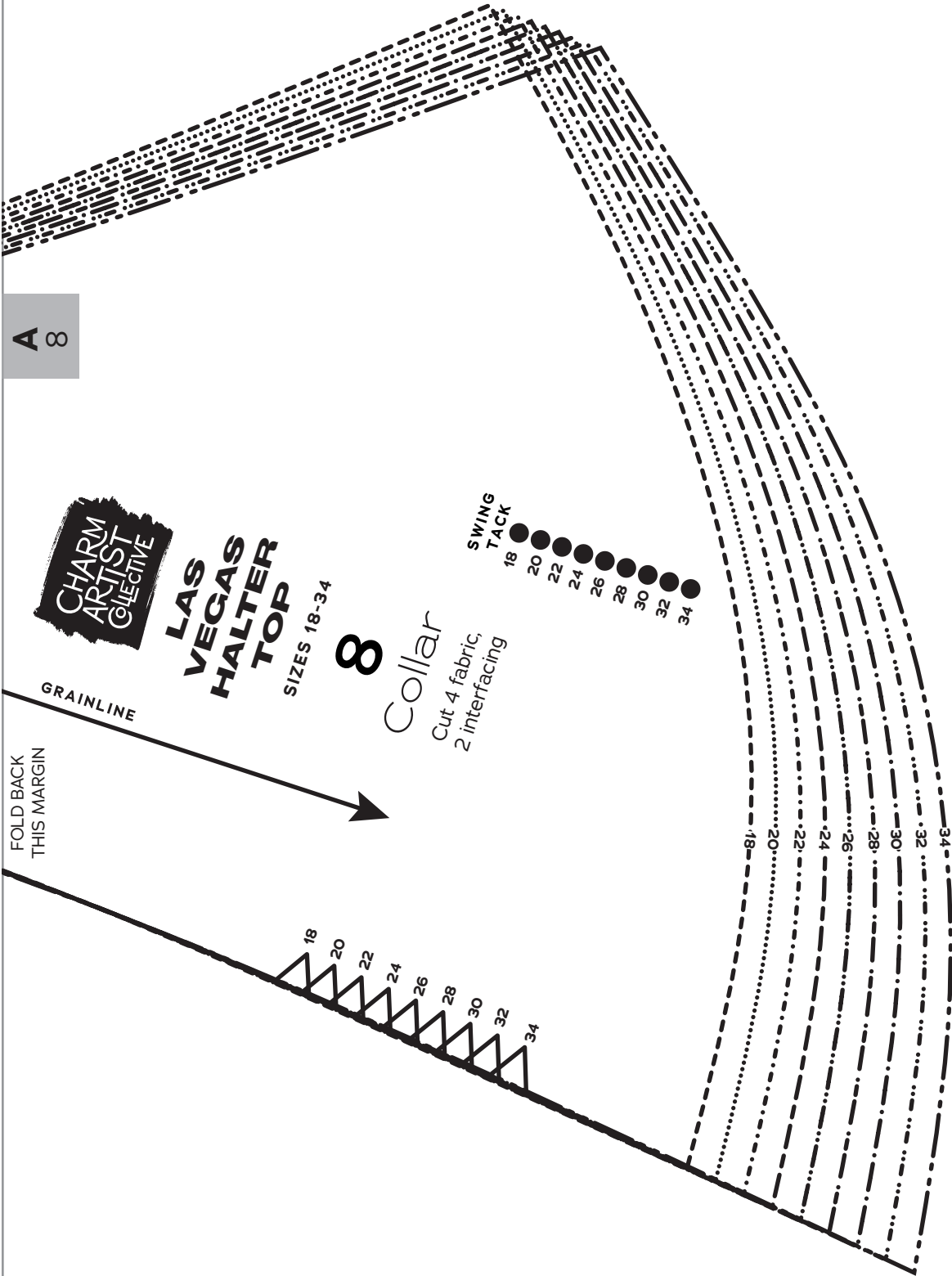
Cut 4 fabric,
2 interfacing

SWING
TACK

- 18
- 20
- 22
- 24
- 26
- 28
- 30
- 32
- 34

FOLD BACK
THIS MARGIN

GRAINLINE

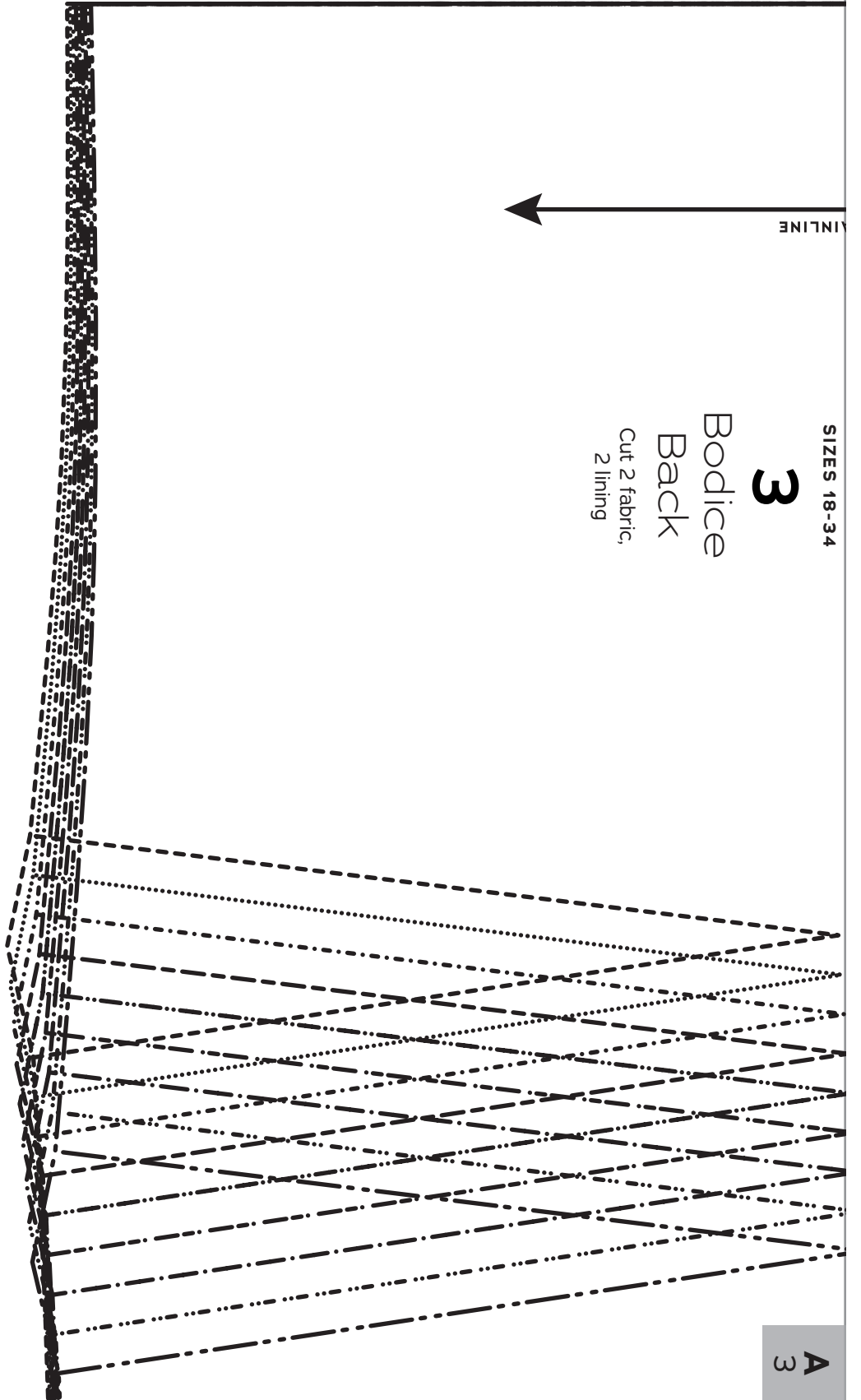


SIZES 18-34

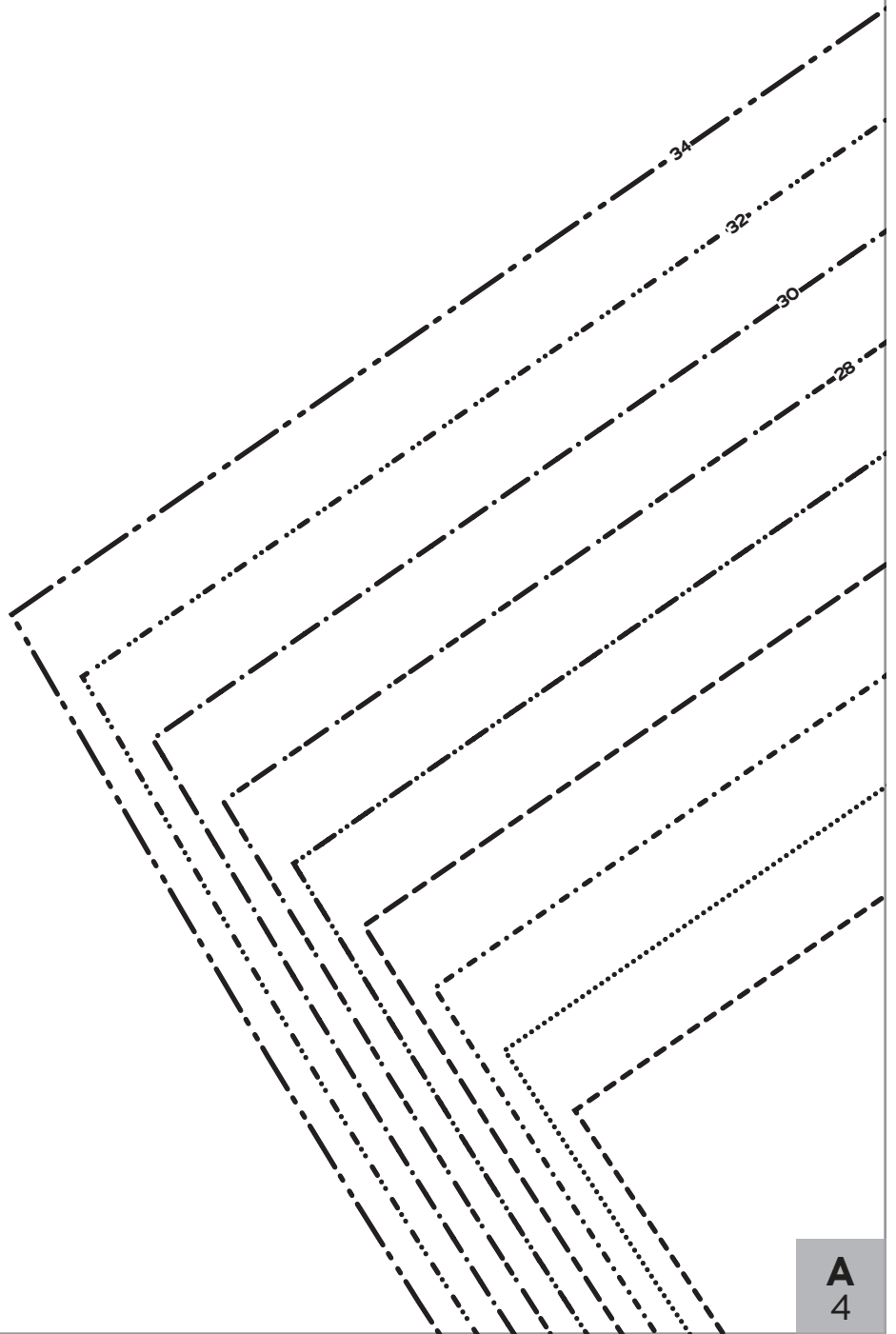
3

Bodice
Back
Cut 2 fabric,
2 lining

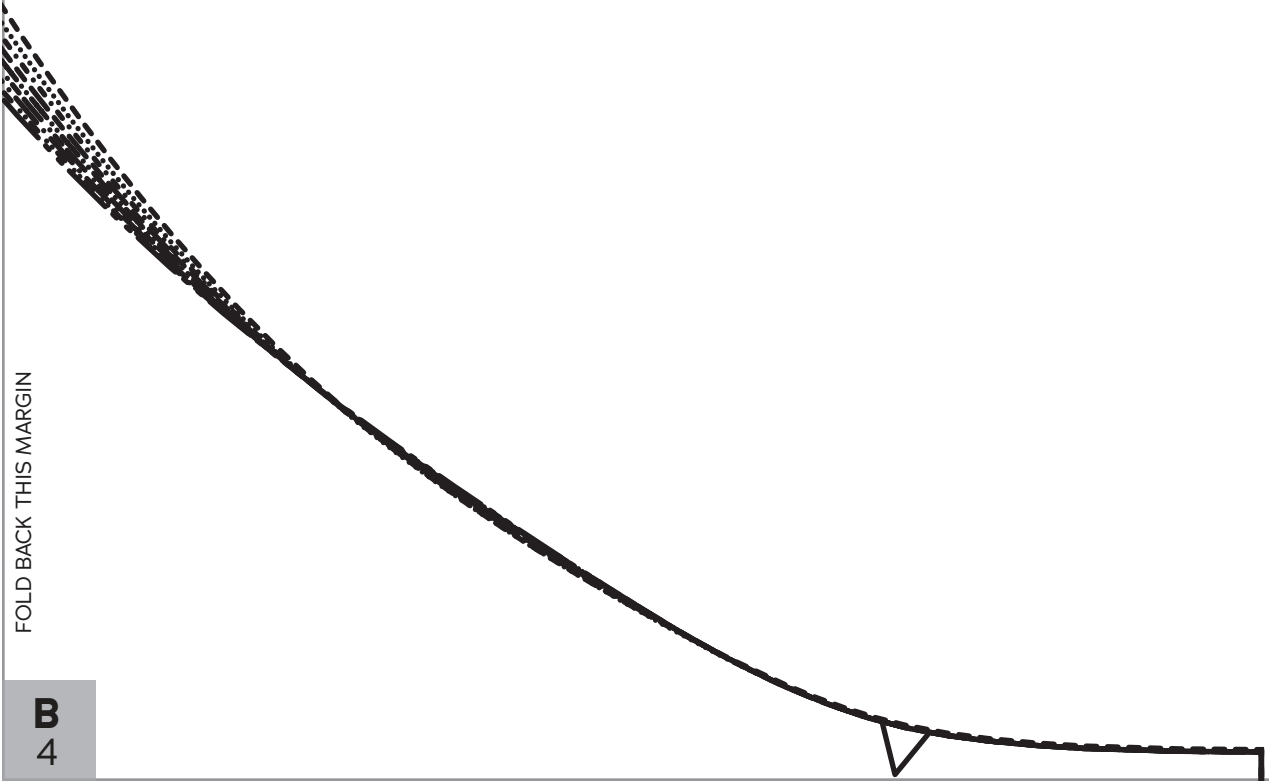
FINLINE



A
3

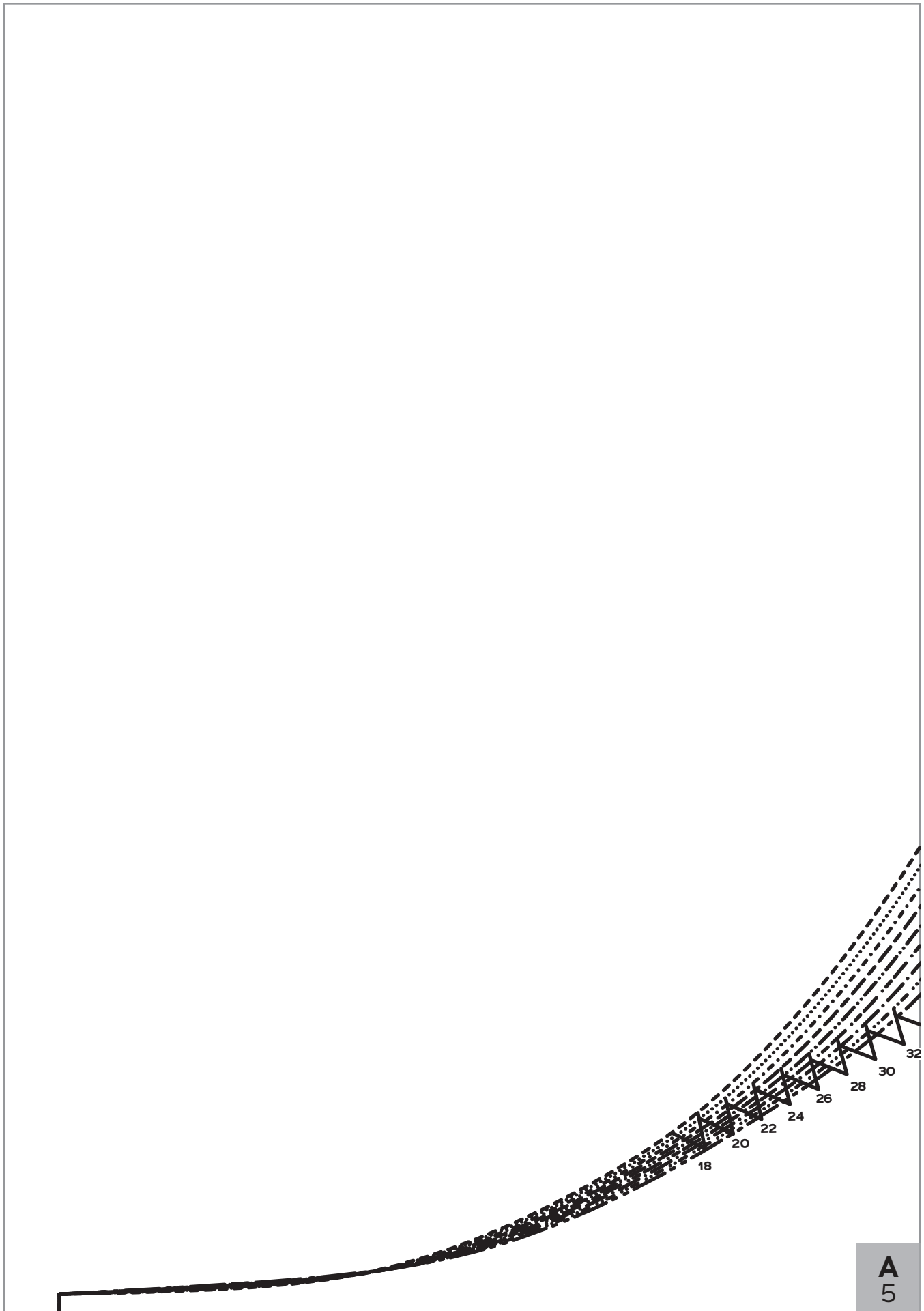


A
4

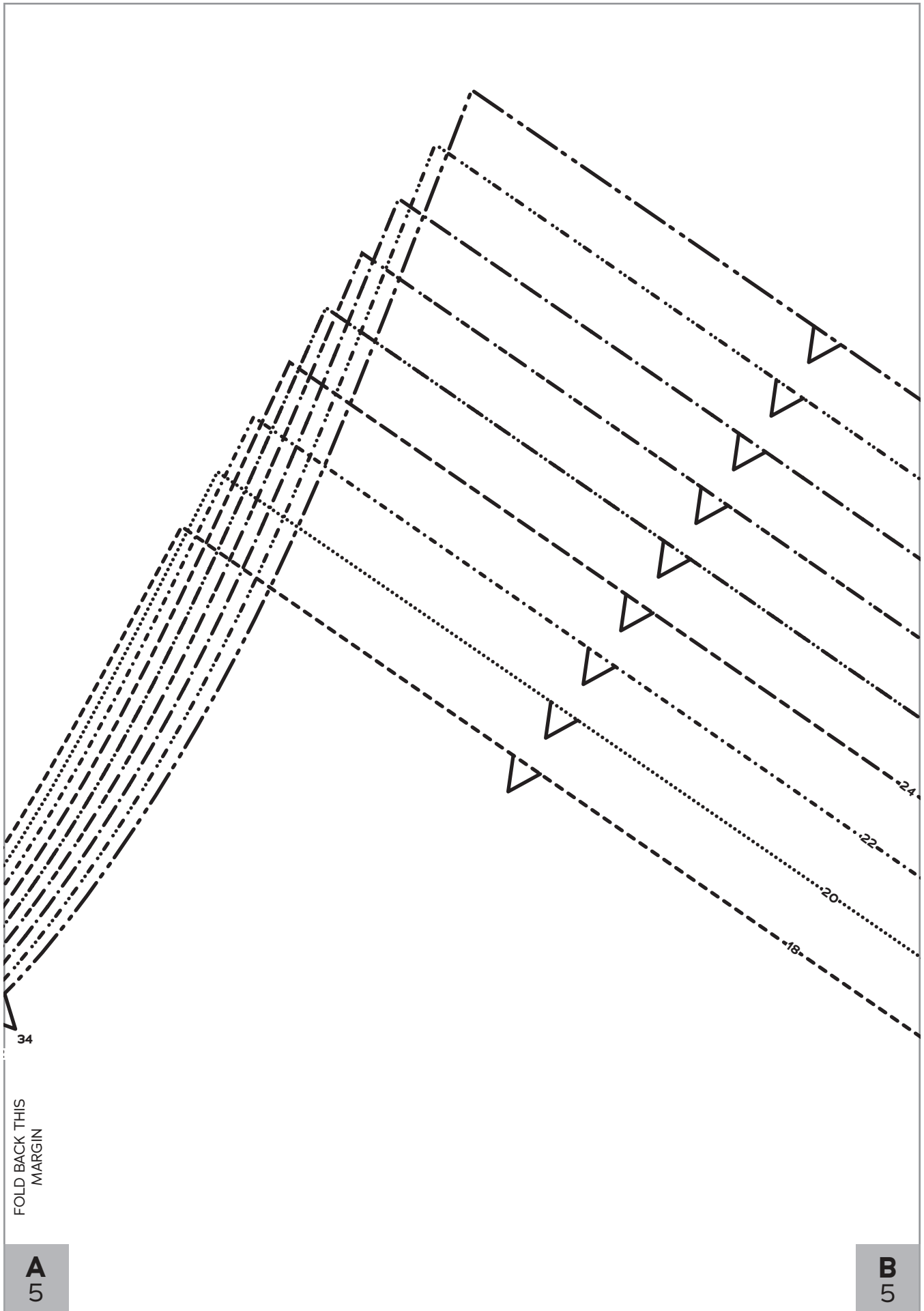


FOLD BACK THIS MARGIN

B
4



A
5

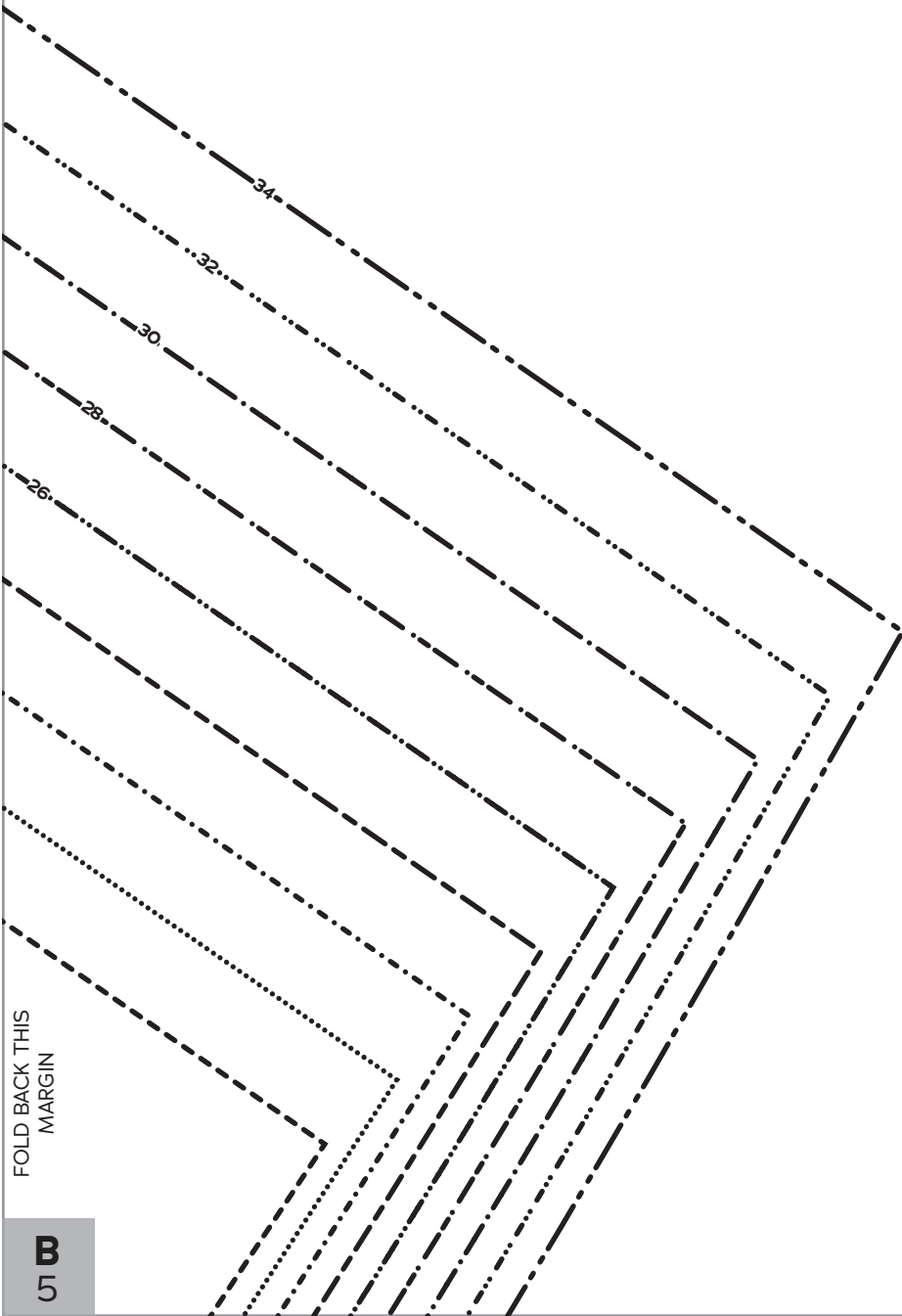


FOLD BACK THIS
MARGIN

34

A
5

B
5

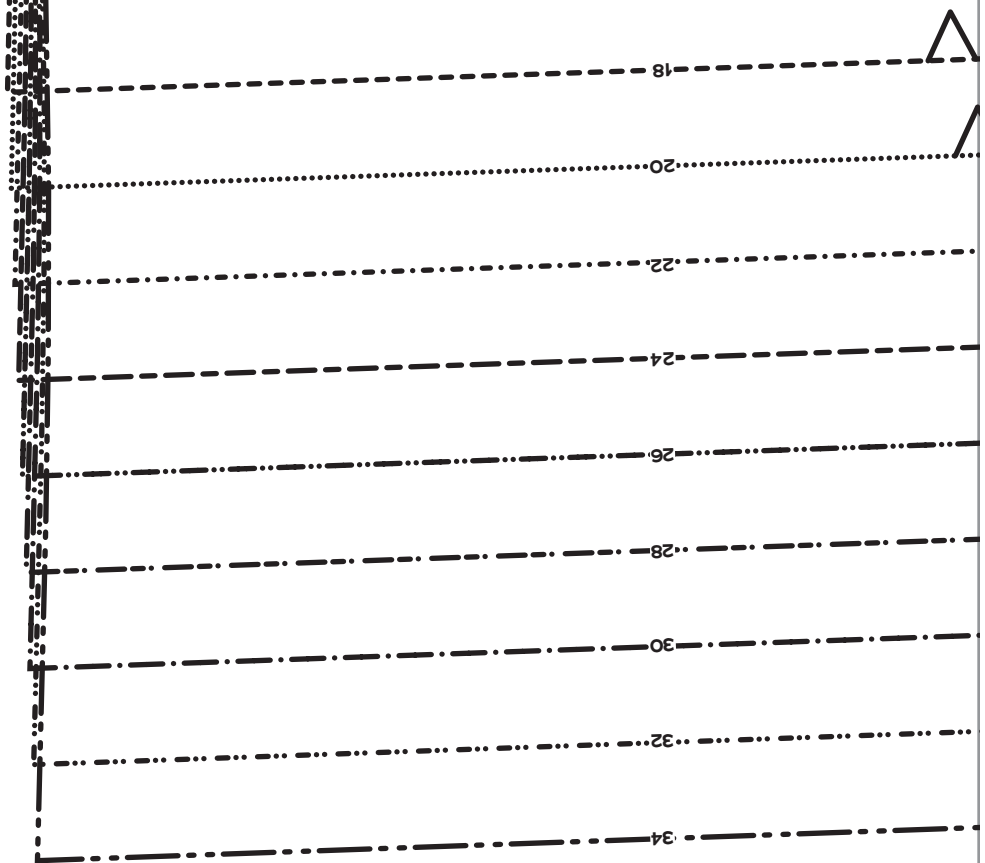


FOLD BACK THIS
MARGIN



FOLD BACK THIS MARGIN

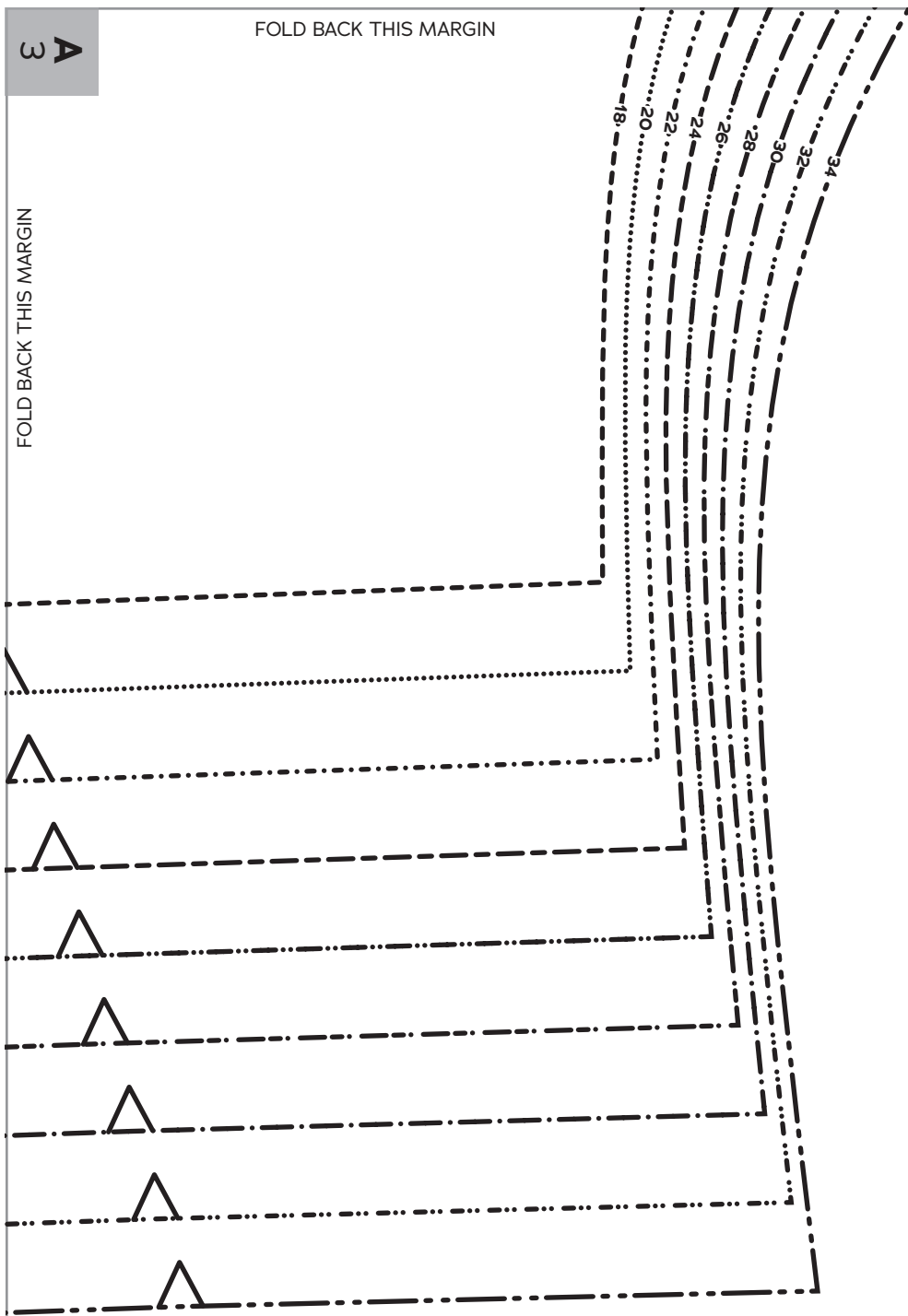
3 A



3 A

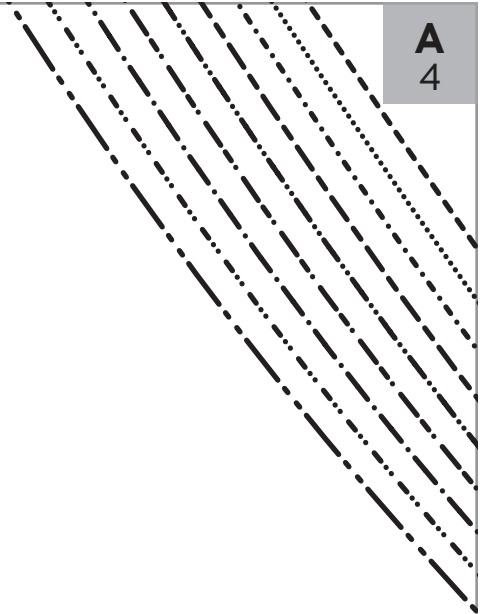
FOLD BACK THIS MARGIN

FOLD BACK THIS MARGIN



FOLD BACK THIS MARGIN

A
4

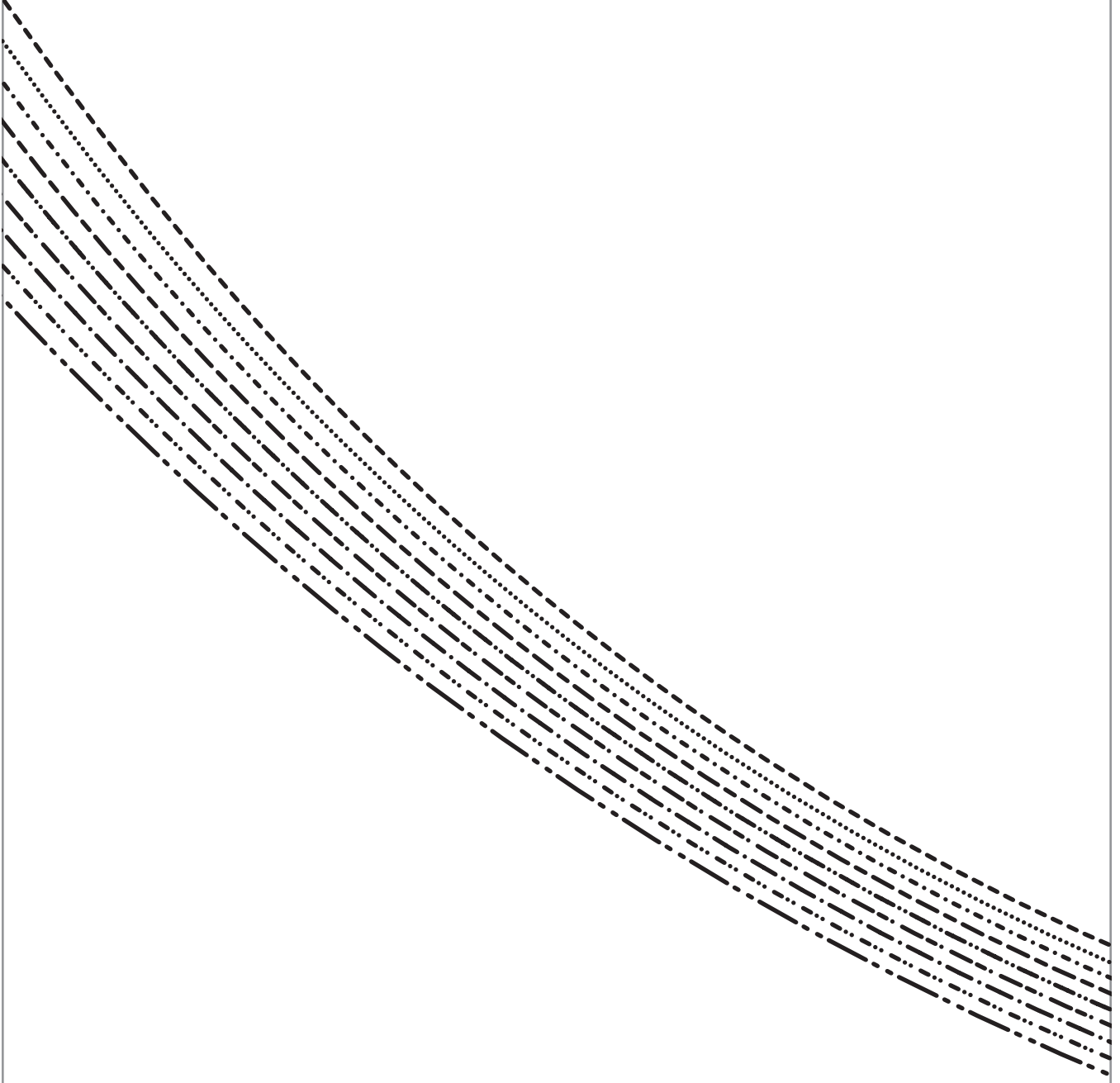


A
4

FOLD BACK THIS MARGIN

B
4

FOLD BACK
THIS MARGIN



B
4

FOLD BACK THIS MARGIN



**LAS
VEGAS
HALTER
TOP**

SIZES 18-34

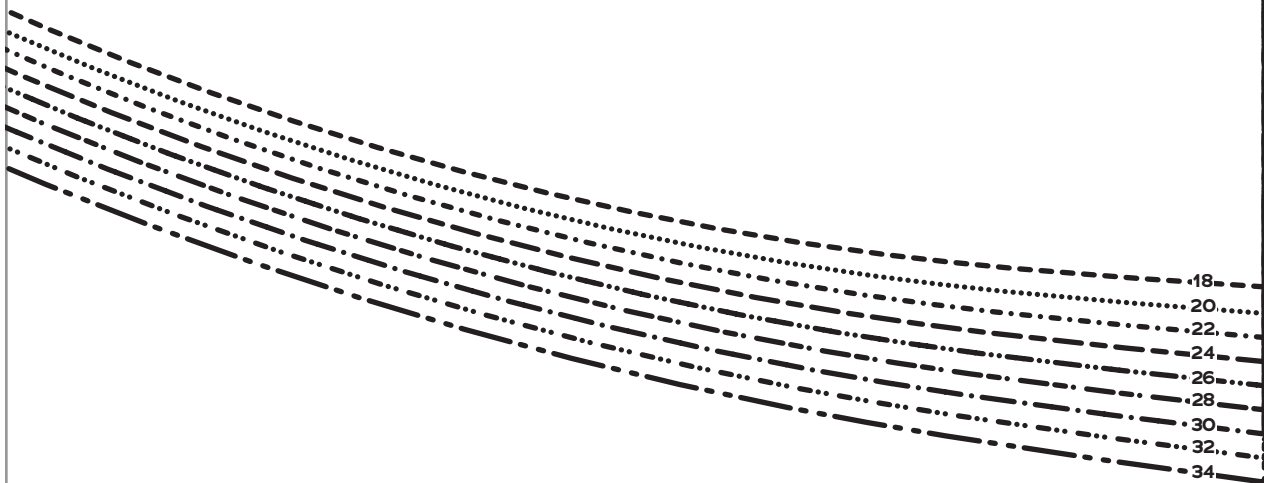
4

Peplum
Front

Cut 1 fabric on fold



FOLD BACK THIS MARGIN



FOLD BACK THIS MARGIN

A
5



GRAINLINE



A
5

FOLD BACK THIS MARGIN

B
5



**LAS
VEGAS
HALTER
TOP**

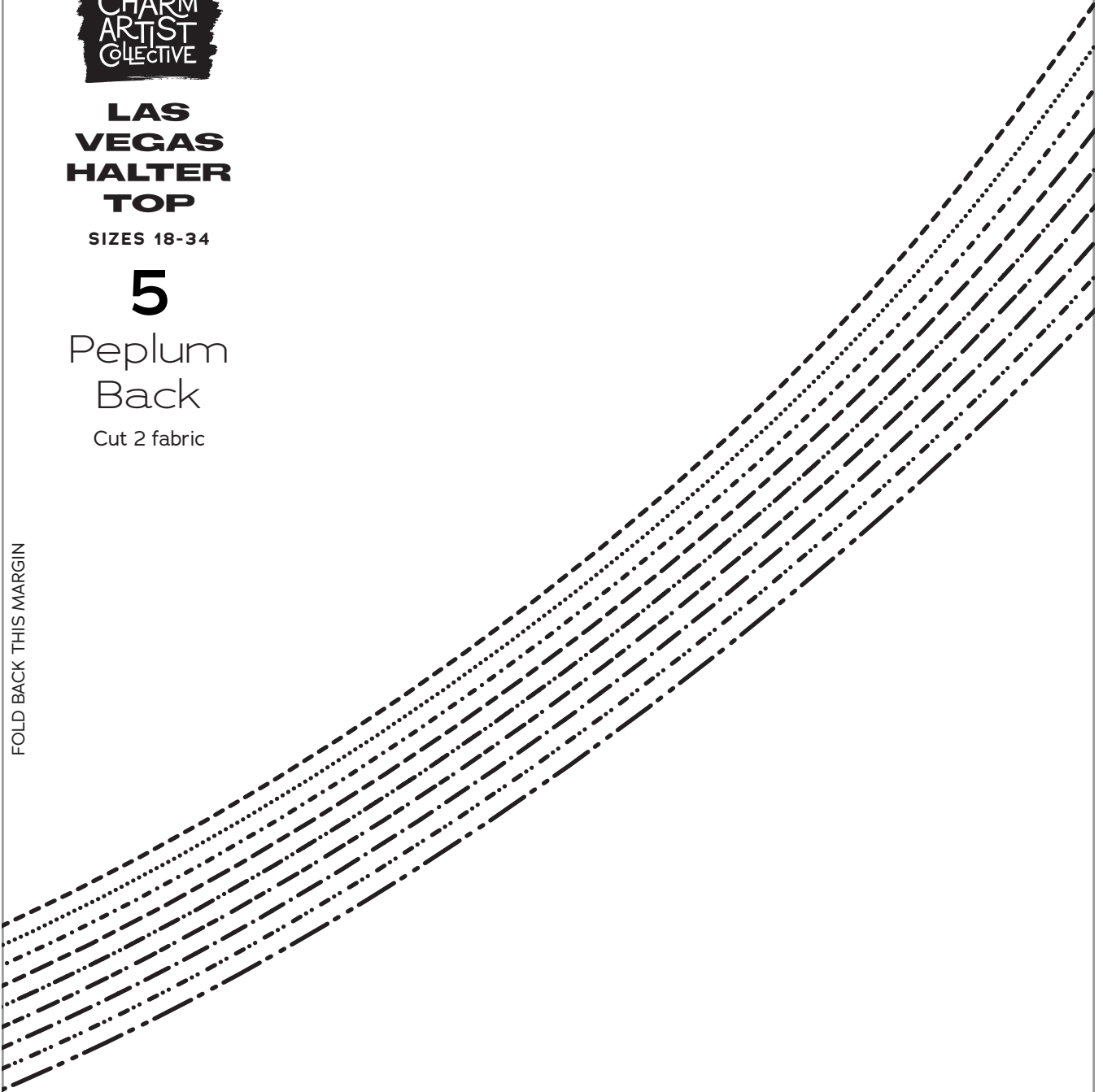
SIZES 18-34

5

Peplum
Back

Cut 2 fabric

FOLD BACK THIS MARGIN



B
5

FOLD BACK THIS MARGIN

FOLD BACK THIS
MARGIN