



Harlow Pajamas Sleeve

A HARLOW PAJAMAS EXPANSION PATTERN

Expand the possibilities of the free Harlow Pajamas pattern with this statement sleeve! You'll feel fabulous in this batwing silhouette.

soso, Gertie



BEFORE SEWING

Seam finishing: if finishing seams with a serger, serge the following seam allowances (without trimming the edges) before starting construction:

- Long vertical edges of sleeve pieces

SEWING INSTRUCTIONS

NOTES

- Use $\frac{5}{8}$ in (1.5 cm) seam allowances on all seams.
- If you don't have a serger to finish your seams, consider using a zigzag or overlock stitch on your sewing machine. If you find it difficult to see notches after serging, you may wish to mark them with chalk, thread tacks, or another marking tool.

- 1. Sew the Harlow Pajama top as usual,** omitting sleeve hem.
- 2. Sew the long underarm seam on the Sleeve:** with right sides together, fold sleeve so that vertical edges match, and pin. Stitch seam from hem up, ending stitching at circle mark. Press seam allowances open.
- 3. Hem the sleeve:** to create a narrow doubled hem, sew a guide stitch $\frac{1}{4}$ in (6 mm) from the hem's raw edge, press under along the guide stitching, then press under again by $\frac{1}{4}$ in. Trim away any excess at point if needed. Edgestitch the top fold to secure the hem.
- 4. Set sleeve into pajama top:** matching seams and notches, pin sleeve into top's armhole opening. Starting at the underarm and folding sleeve's seam allowances out of the way, stitch the sleeve into the top. Finish armhole seam allowances as one, trimming to $\frac{3}{8}$ in (1 cm).

RESOURCES

- [The Harlow Pajamas](#)
- [Tropical Rayon fabric for top](#)
- [Green Cotton Lawn for pants](#)



FABRIC INFORMATION AND RECOMMENDATIONS

The usual Harlow Pajamas fabric recommendations apply: lightweight fabrics like rayon challis, rayon crepe, cotton lawn, and cotton batiste work well. If you're feeling up for a more challenging fabric, try it in a lightweight silk, like crepe de chine or charmeuse.

REQUIRED YARDAGE

Batwing sleeve requires 1 yd (0.9 m) of fabric in addition to the original Harlow Pajamas requirements.

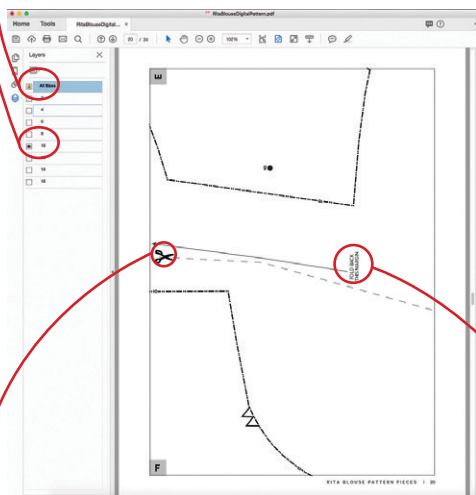
HOW TO USE THIS PATTERN

The pattern pieces are tiled so you can print them on Letter (8½ x 11) or A4 size paper. You can also send the A0 pattern sheet PDF to a local or online printer (like www.pdfplotting.com) to print on large sheets (36” x 48” for U.S. or A0 for international).

This pattern includes size layers. To get the best results, open either the Tiled or A0 pattern pieces PDF in Acrobat Reader.

Open the Layers Palette (View>Show/Hide>Navigation Panes>Layers) and hide all of the layer(s) except for the ones you want to print by clicking on the eye icon.

The All Sizes layer has general pattern information and will always print.



WORKING WITH THE TILED PIECES

Go to File>Print and change the page range to the pages you need for the pieces you’ve chosen (see Pattern Pieces Printing Index). Make sure the Page Sizing settings to 100% or Actual Size. Test this after printing by measuring the 1” test box on the first page of the bodice pattern pieces.

Cut apart any pattern pieces that share a page by cutting on the gray long dashed lines. Then fold back the page margins on each page as directed.

Tape the pages together, butting up the folded page edges with the gray margin lines, matching up the letters in gray boxes.

MORE FROM GERTIE



Purchase more patterns at charmpatterns.com.