

CHARM PATTERNS by Gertie

STANWYCK BODICE AND COLLAR Sizes 18-34 with cup sizes A-H

5/8 inch (1.5 cm) seam allowances are included on all pattern pieces.

PAGE 1 OF 3

PATTERN PIECE INDEX

- 1 Bodice Front, A/B Cup
- 2 Bodice Back
- 3 Collar
- 4 Collar Facing Front
- 5 Collar Facing Back

SIZES 18-34

PATTERN SIZE KEY

18 =

20 =

22 =

24 =

26 =

28 =

30 =

32 =

34 =

SYMBOL KEY

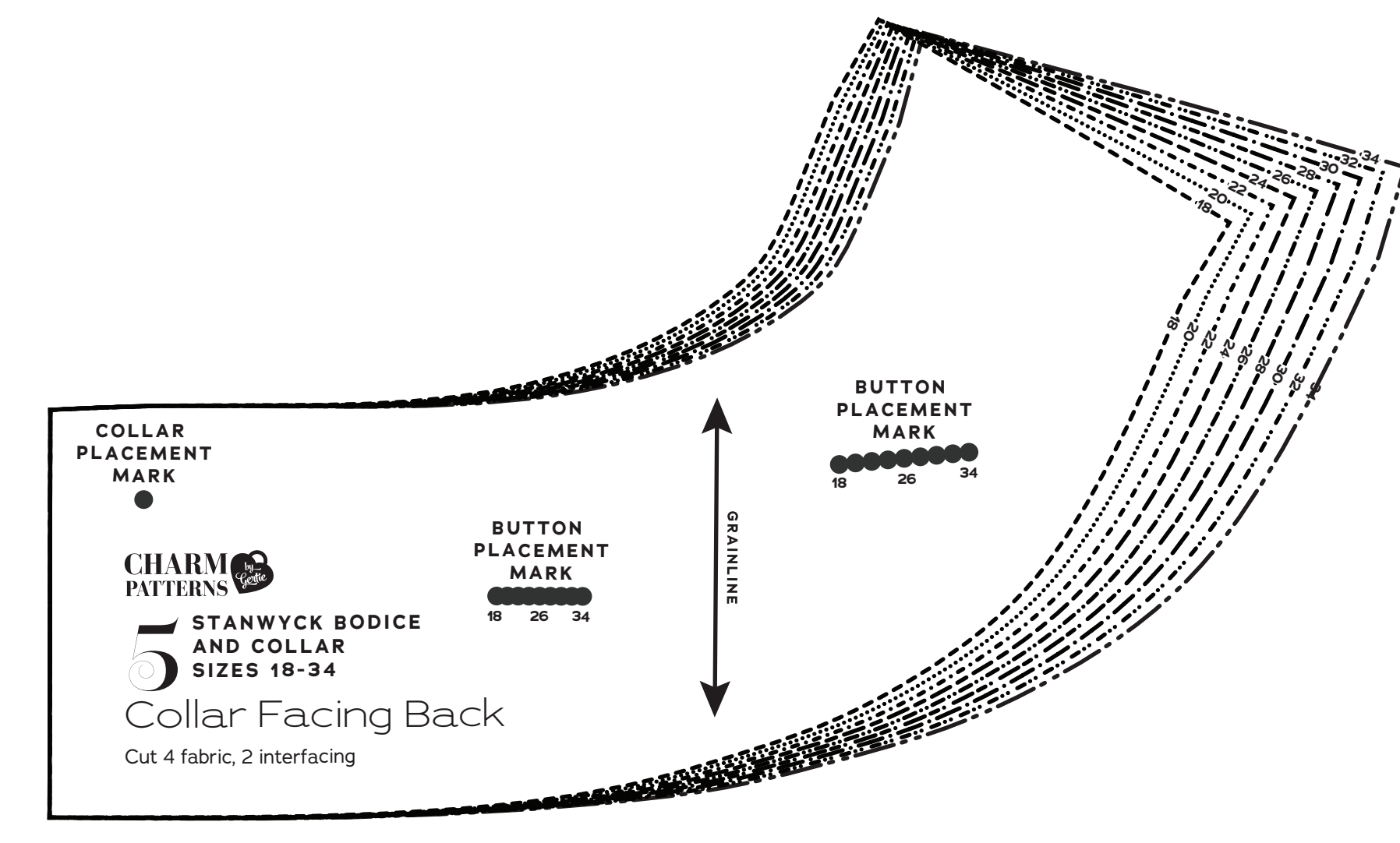
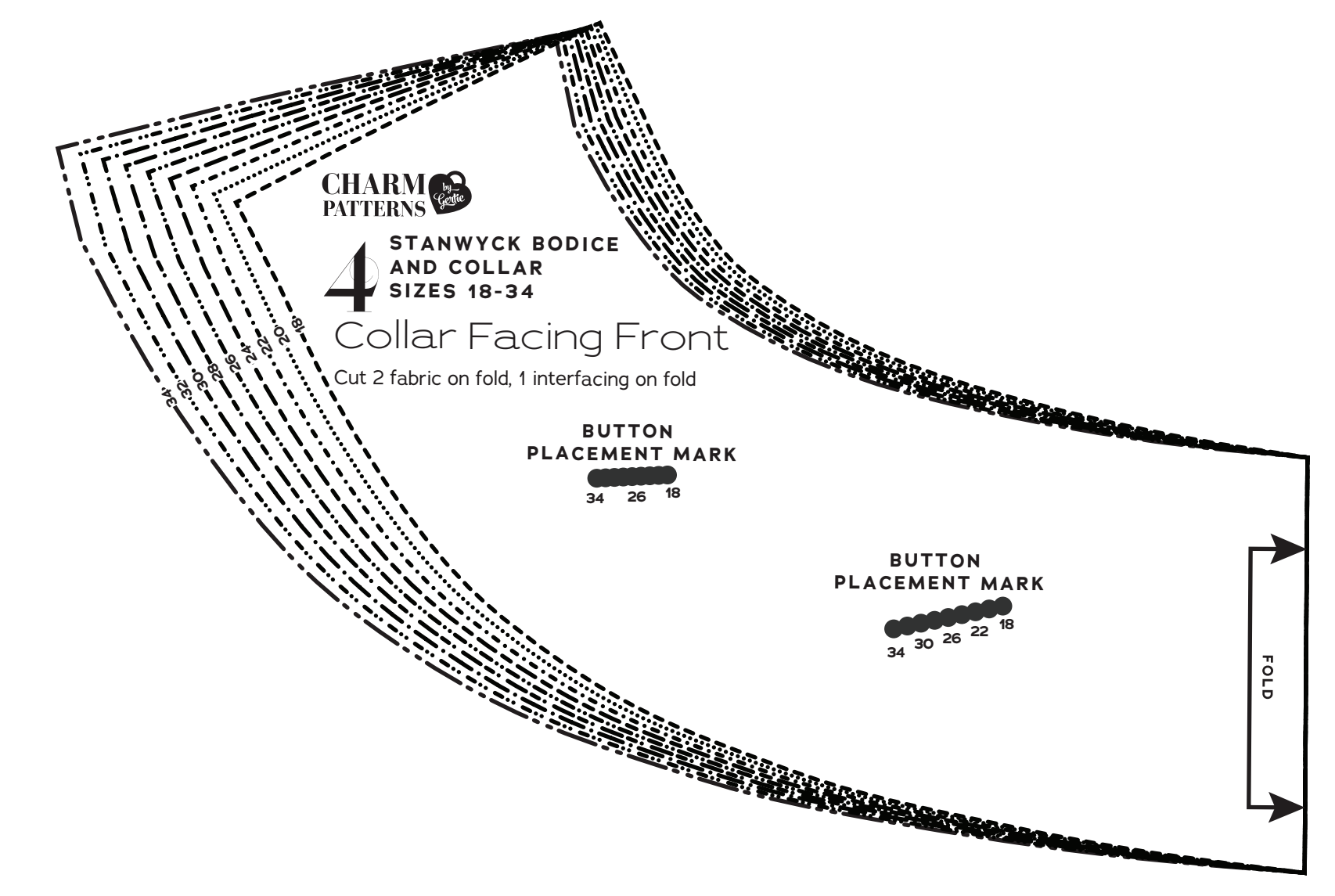
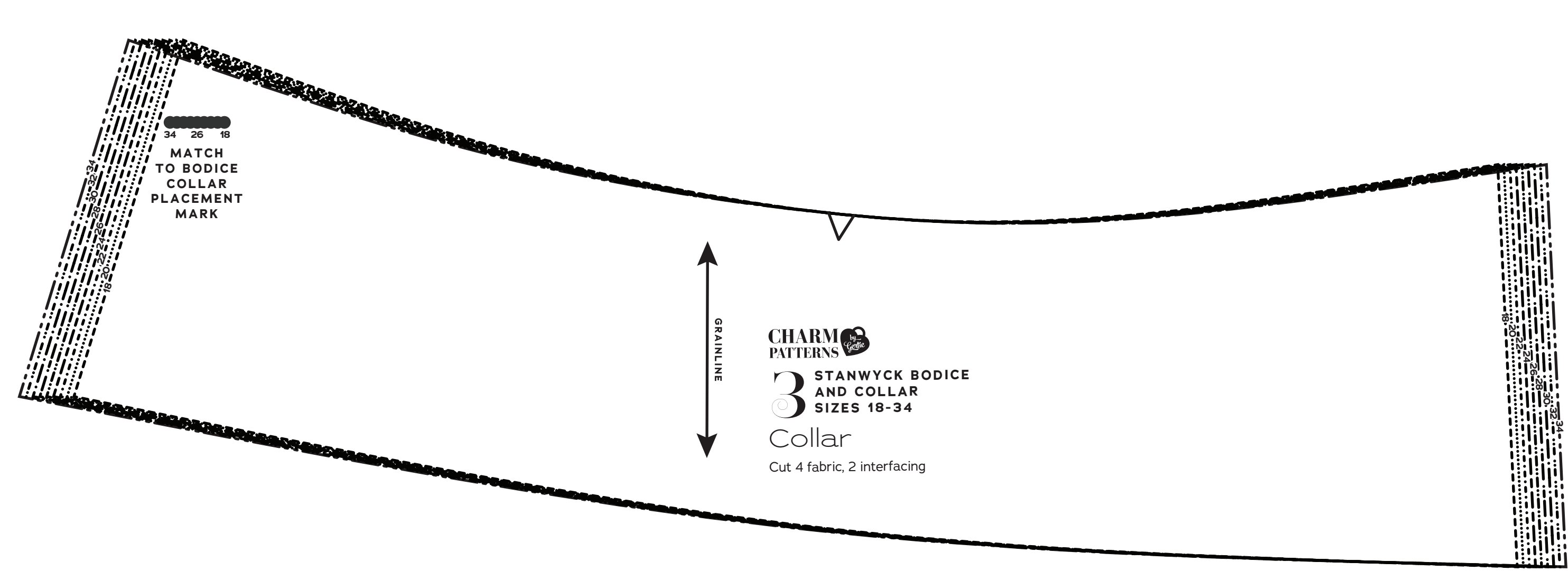
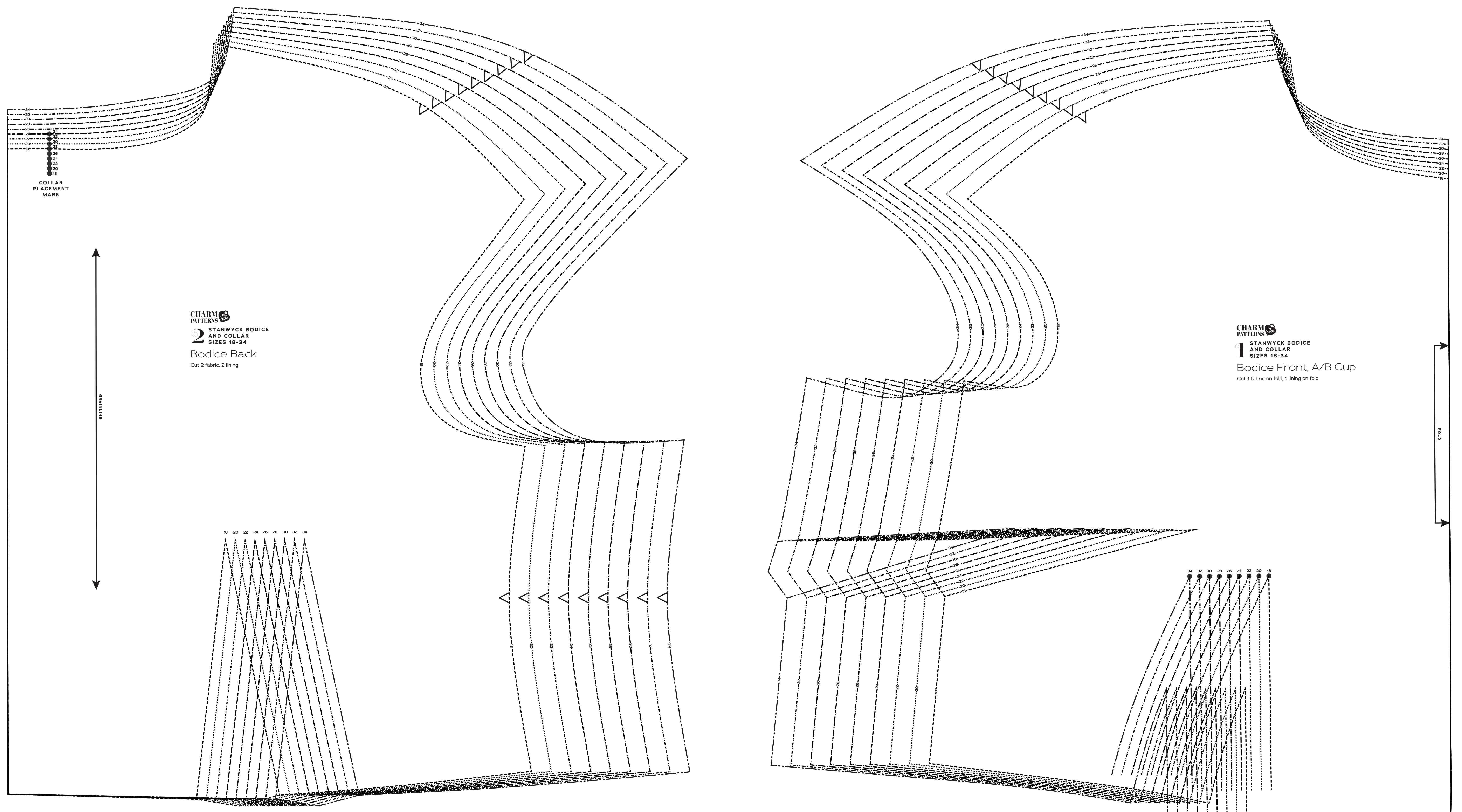
grainline arrow

match point/
placement mark

1 in
test
square

2 cm
test
square

© 2023 Charm Patterns by Gertie Distribution and Commercial Use Prohibited



STANWYCK BODICE AND COLLAR

Sizes 18-34
with cup sizes A-H

5/8 inch (1.5 cm) seam allowances are included on all pattern pieces.

PAGE 2 OF 3


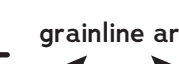
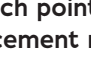
PATTERN PIECE INDEX
1 Bodice Front, C Cup
1 Bodice Front, D/DD Cup

SIZES 18-34

PATTERN SIZE KEY

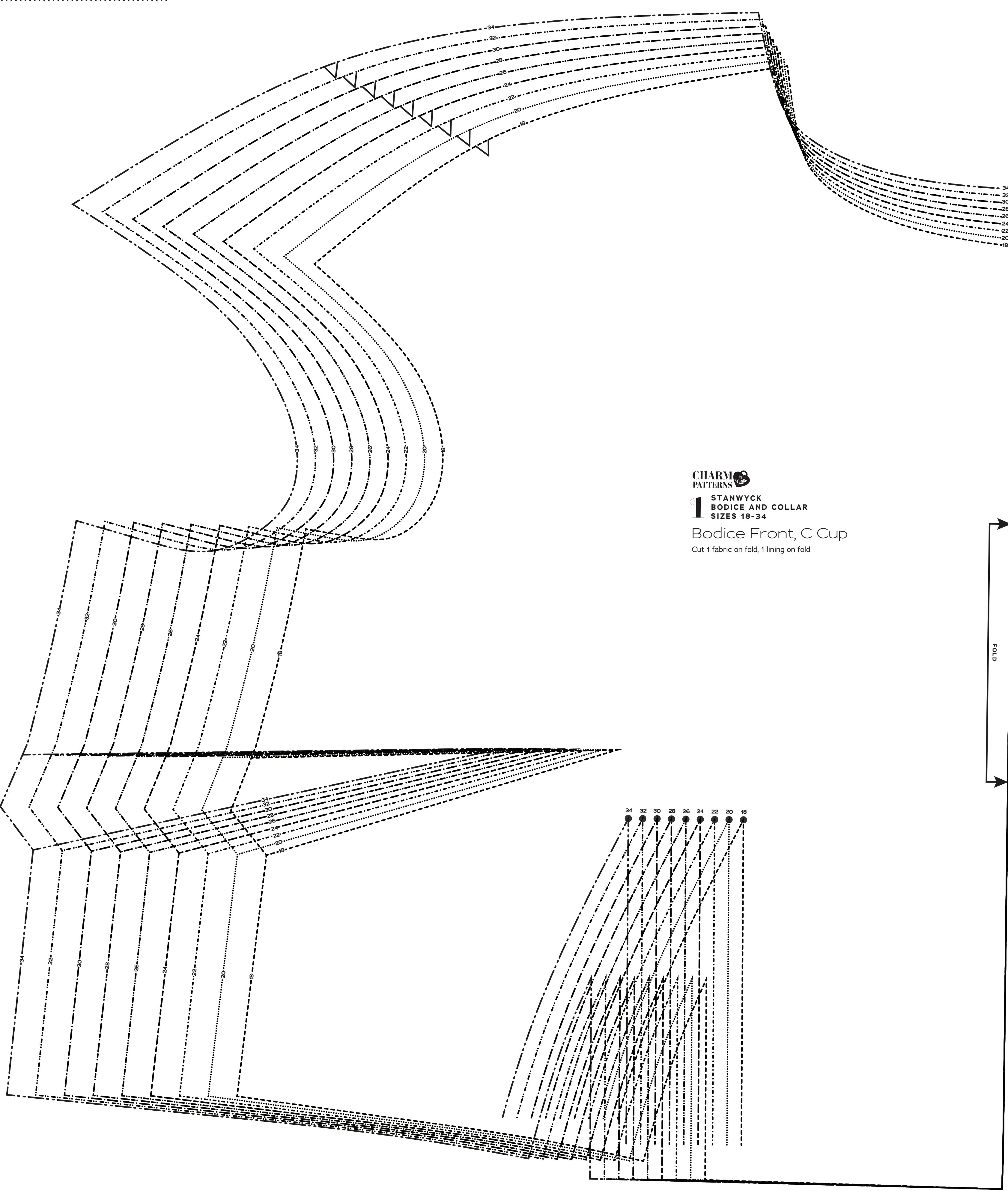
18	-----
20	-----
22	-----
24	-----
26	-----
28	-----
30	-----
32	-----
34	-----

SYMBOL KEY

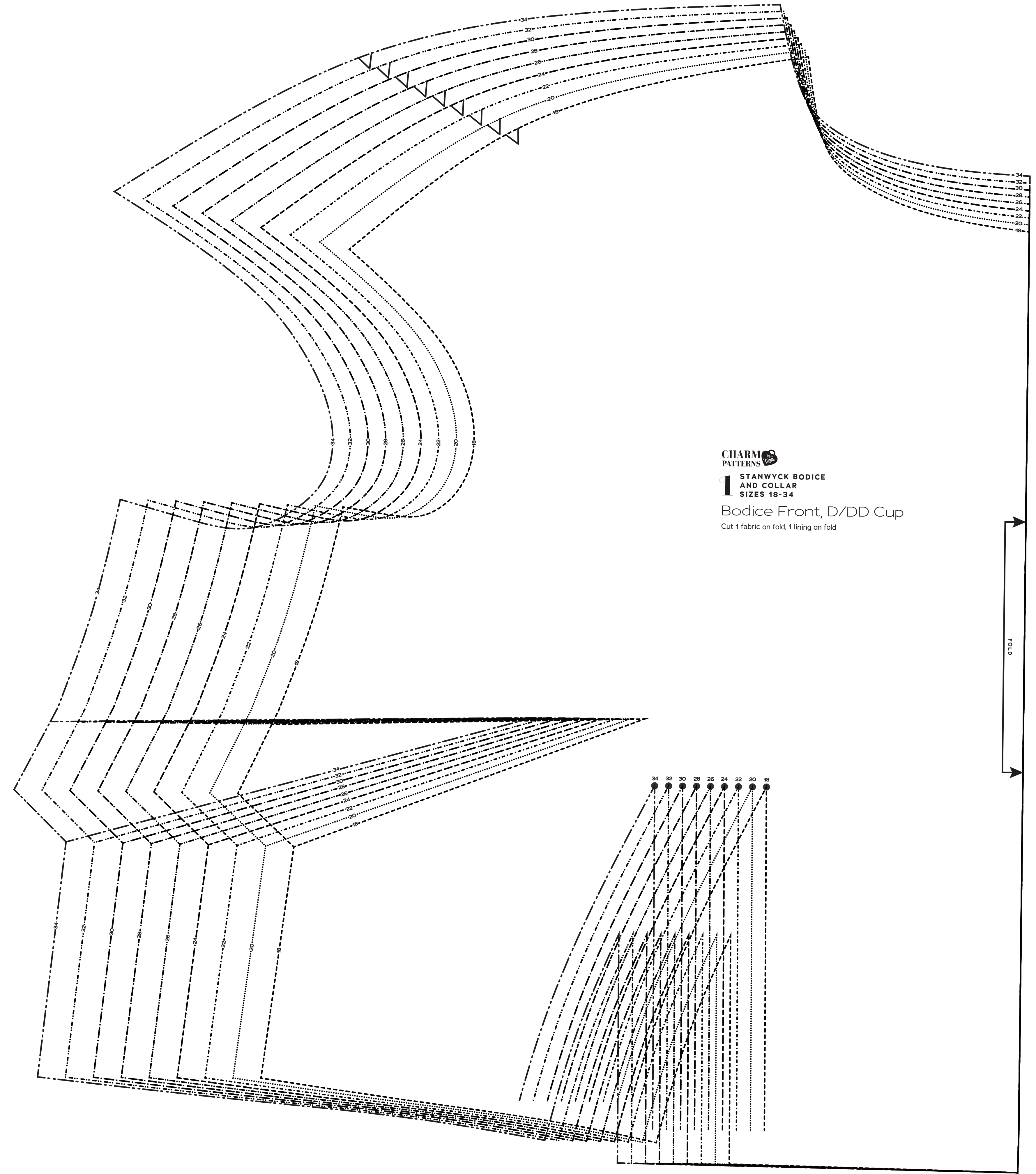
	grainline arrow
	match point/ placement mark
	

1 in
test
square

2 cm
test
square



CHARM PATTERNS
STANWYCK BODICE AND COLLAR
SIZES 18-34
Bodice Front, C Cup
Cut: 1 fabric on fold, 1 lining on fold



CHARM PATTERNS
STANWYCK BODICE AND COLLAR
SIZES 18-34
Bodice Front, D/DD Cup
Cut: 1 fabric on fold, 1 lining on fold

CHARM PATTERNS by Gertie

STANWYCK BODICE AND COLLAR

Sizes 18-34
with cup sizes A-H

5/8 inch (1.5 cm) seam allowances are included on all pattern pieces.

PAGE 3 OF 3

PATTERN PIECE INDEX

- 1 Bodice Front, F/G Cup
- 1 Bodice Front, H Cup

SIZES 18-34

PATTERN SIZE KEY

- 18 - - - - -
- 20 - - - - -
- 22 - - - - -
- 24 - - - - -
- 26 - - - - -
- 28 - - - - -
- 30 - - - - -
- 32 - - - - -
- 34 - - - - -

SYMBOL KEY

grainline arrow

match point/
placement mark

•

1 in
test
square

2 cm
test
square

© 2023 Charm
Patterns by Gertie
Distribution and
Commercial Use
Prohibited

