



THE ULTIMATE SURVIVAL WORLD® INSTALLATION, UPDATE & TROUBLESHOOTING GUIDE

MAKE SURE YOU ARE REFERRING TO THE LATEST VERSION OF THE GUIDE - IT IS FREQUENTLY UPDATED WITH NEW INFORMATION

Please head to the [TrixyBlox Discord](#) & link your [Patreon](#) Account if you need support, our team will respond as soon as they can (discord.gg/TrixyBlox → [#usw-support channel](#)).

CONTENTS

- **Important Information**
- **Java Installation**
- **Bedrock Installation**
- **Updating Your USW (without losing progress)**
- **Server Set Up**

IMPORTANT INFORMATION

Ensure your language is set to English US & we recommend turning biome blend up & setting your GUI scale between 1-4.

Do **not** set your difficulty to Peaceful if you want to play Survival (*this will despawn certain special mobs that will not respawn*).

The world is currently not compatible with **Java Realms**. **Bedrock Realms** will work - keep trying to upload the world, **it may give you an error even if it has worked** (this is a Realms glitch), but check the file each time until it works! Realms can be very glitchy, so please bear with it!

Distribution and/or commercial use of this world is **strictly prohibited**. TrixyBlox® and The Ultimate Survival World® are registered trademarks, owned by the TrixyBlox Partnership. All rights reserved.

JAVA

We recommend installing **Sodium** for improved performance. Our recommended shader would be **Complementary** (*you can tailor the settings depending on how powerful your setup is*).

PACKS

Do **not** tamper with the [USW Datapack](#) - this will break the world and block you from playing in it. On Java, ensure the [USW Resource Pack](#) is in your resource packs folder (*still zipped*) & activated (*this will only need to be done manually if hosting on a Java server, see [SERVER PRO SET UP](#), which applies to most hosts*).

MODS

You can add certain mods to the world, but it was not designed with this in mind. **If you run Forge, or any mods or plug-ins, you may run into compatibility issues. Please remove Forge if you receive the World Lock Error Screen - Fabric should work fine so please use this instead to avoid issues.** If you run into any issues, try taking off different mods to narrow down/resolve your issue.

Method 1 (Using The USW Installer)

STEP 1

Download the “USW-Java-WORLD” .zip and the “USWDP” .zip from the download link on the **Patreon** post (*if you purchased the Survival Maps Tier, you will have both the Standard & Optimised versions to choose from*).

STEP 2

Download [The USW Installer App](#) .zip file from this link:

<https://github.com/Goddeh1/USW-Installer-App/releases/latest>

If your antivirus blocks this download, you may have your settings too high. If you are not comfortable changing your settings, you can use **Method 2** below to install your world manually.

STEP 3

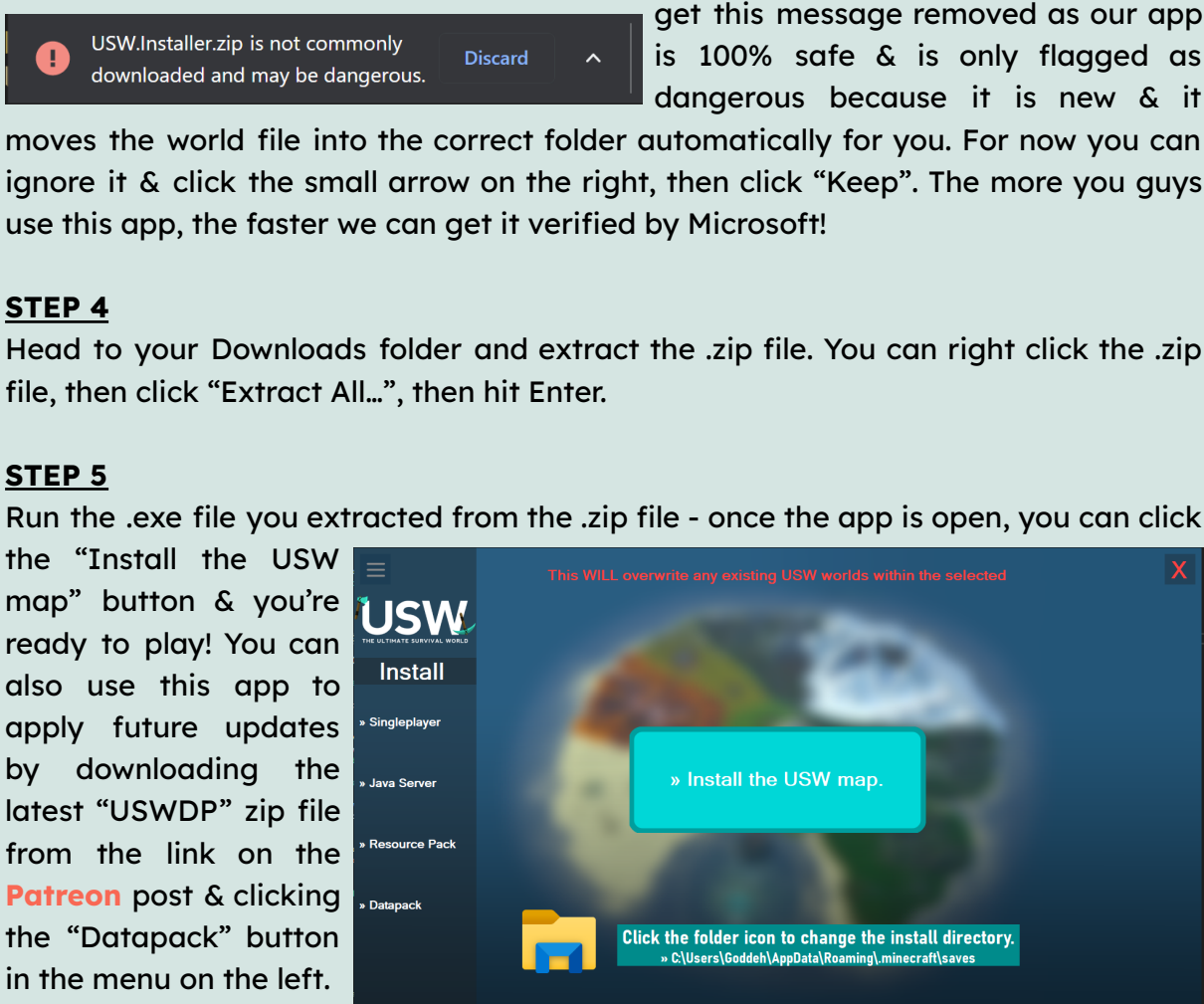
Because this is a brand new app we have created for you guys, you may see a message stating that the file could be dangerous - we are working with Microsoft to get this message removed as our app is 100% safe & is only flagged as dangerous because it is new & it moves the world file into the correct folder automatically for you. For now you can ignore it & click the small arrow on the right, then click “Keep”. The more you guys use this app, the faster we can get it verified by Microsoft!

STEP 4

Head to your Downloads folder and extract the .zip file. You can right click the .zip file, then click “Extract All...”, then hit Enter.

STEP 5

Run the .exe file you extracted from the .zip file - once the app is open, you can click the “Install the USW map” button & you’re ready to play! You can also use this app to apply future updates by downloading the latest “USWDP” zip file from the link on the **Patreon** post & clicking the “Datapack” button in the menu on the left.



Method 2 (Manual Installation)

STEP 1

Download the “USW-Java-WORLD” .zip from the link in the **Patreon** post *(if you purchased the Survival Maps Tier, you will have both the Standard & Optimised versions to choose from)*.

STEP 2

Unzip the file. You can right click the .zip file, then click “Extract All...”, then hit Enter. Ensure the file is unzipped properly - if you open the unzipped folder, you should see multiple files inside. If there is only a single folder inside, this means you haven’t unzipped, so you need to drag that folder out *(Minecraft won’t be able to read the world file if it is inside a folder within a folder)*.

STEP 3

Head to your Minecraft directory *(an easy way to get here is Windows Start → type run & press Enter → type %appdata% & press Enter → click on the “.minecraft” folder)*.

STEP 4

Drag the unzipped world file into the “saves” folder.

If you do not have a “saves” folder, this means you have never opened a world in Minecraft - to create the “saves” folder, just create a Vanilla world in-game and then attempt this step again. The world will then appear in your Singleplayer Worlds when you launch the game *(if it’s not at the top, use the search bar to find it - & remember your save location may differ if you’re using mods)*.

STEP 5

Enjoy The Ultimate Survival World & join the **TrixyBlox Discord** for any support requests (discord.gg/TrixyBlox).

BEDROCK (PC/CONSOLE/MOBILE)

Method 1 (PC & MOBILE ONLY)

STEP 1

Download the “USW-Bedrock-WORLD” .mcworld file from the link in the **Patreon** post. If you just want to **update** your old USW world file, just download the latest “USW-Bedrock-ResourcePackONLY” .mcaddon file, follow the same steps below, then apply the new pack in your world settings & remove the old one. Make sure you update Minecraft to the latest version *(you may need to manually do this by heading to the Microsoft Store → Library & updating Minecraft)*.

STEP 2

Go to your Files or Downloads folder & open the .mcworld file you downloaded in **STEP 1** - this will automatically import the world to Minecraft. If you have never imported a world before, create a default world in Minecraft to make sure this works *(otherwise Minecraft won’t have a folder to import to)*. **If the download fails on Mobile**, try moving the file into your Minecraft folder then opening it from there. If it

doesn't work by just clicking on it inside the Minecraft folder, another option is holding your finger on the file or clicking the 3 dots to see more options & clicking Share → Minecraft.

STEP 3

Once the file has been imported to Minecraft, the [USW Resource Pack](#) should apply automatically.

If the [USW Resource Pack](#) has not applied automatically, you can download the "USW-Bedrock-ResourcePack" .mcaddon file & open it on PC, or download the same file on Mobile and move it to your Minecraft folder then open it. This should import the [USW Resource Pack](#) to your device. If you wish to apply it to The USW, just edit the world in-game and head to "Resource Packs" to activate it.

STEP 4

Enjoy The Ultimate Survival World & join the [TrixyBlox Discord](#) for any support requests (discord.gg/TrixyBlox).

Method 2 PlayStation/Nintendo Switch/Xbox/Mobile (Laptop/PC required for transfer, using [Realms](#))

STEP 1

Follow **STEPS 1-3** of **BEDROCK Method 1** (see above) using the same Minecraft account as the device you're transferring to.

STEP 2

Set up a Realm ready for the transfer (you can use the **free [Realms](#) trial** & cancel afterwards!!).

STEP 3

Click "Play on Realm" in the Edit menu of the world file and upload to the Realm you created in **STEP 2**. This will take a while to upload and you may receive errors even if it has worked. Even if the upload is successful, you may need to wait a while to be able to play (*as Realms may still be processing the file*). Keep persevering with the upload - Realms can be buggy & sometimes you receive errors even when something has worked (*keep persevering, try restarting your game & keep checking if the file has uploaded!*).

STEP 4

Load Minecraft on your chosen device and head to the Edit menu on the Realm - you can scroll down in this menu to download the world to your device if you don't want to keep your Realms subscription, or you can just play on your Realm.

STEP 5

Enjoy The Ultimate Survival World & join the [TrixyBlox Discord](#) for any support requests (discord.gg/TrixyBlox).

Other methods can be found online & conversion methods & troubleshooting are discussed in the [TrixyBlox Discord](#) (discord.gg/TrixyBlox). **If you need to find the Stronghold, head to 539 82 -905. We are also looking into alternate transfer methods.**

UPDATING YOUR USW (WITHOUT LOSING YOUR PROGRESS)

USW Datapack updates can be applied through [The USW Installer App](#) (linked above & on the [Patreon](#) post) after downloading the latest “USWDP” file from the [Patreon](#) link. You can also manually apply updates by opening the world file in your “saves” folder (an easy way to get here is Windows Start → type run & press Enter → type %appdata% & press Enter → click on the “.minecraft” folder → “saves”). In the “saves” folder, click “datapacks” & replace the old datapack with the latest “USWDP” file on the [Patreon](#) link.

The process is the same for the [USW Resource Pack](#) - download the pack from the link below, then you can either use [The USW Installer App](#) to apply the update, or you can rename the downloaded pack to “resources.zip”, delete the existing “resources.zip” in your world file & drag in the new one:

<https://github.com/Goddeh1/USWRP/releases/tag/1.1>

(Be sure to select the file containing the number corresponding with your player limit - choosing a different version won't affect the player limit, but the wrong value will show up in your menus)

On Bedrock just import the new pack (following Method 1 of the [BEDROCK](#) Guide), remove the old pack from your world & apply the new one.

SERVER PRO SET UP (STEPS ARE SIMILAR FOR MOST SERVER HOSTS)

<https://server.pro/>

STEP 1

Buy a server (we recommend at least 4GB).

STEP 2

Change “Type” to Paper.

STEP 3

In the Files tab, upload the “USW-Java-WORLD” .zip (you can either drag it into your browser or select upload - as file, not folder).

STEP 4

Click on the uploaded zip & then select “Unpack Archive” in the top right.

STEP 5

Once the file has been unzipped, it will appear as a separate folder (further up in your directory, with a yellow file icon).

STEP 6

Go to your “Worlds” tab on the left and select the world you just unzipped from the list. Make sure it's the right one!

STEP 7

World Changed

Your world has been updated. Please note that you need to restart the server for the change to take effect.

Once you have selected the world, you will see ← this message - make sure you restart the server for the world to update.

Restart



STEP 8 - Vanilla/Fabric Servers Only (if you followed the guide & are using Paper or Spigot as your server type, ignore this step & skip to STEP 9)

Install the [USW Resource Pack](#) client side. You will need to put a direct download link to the appropriate resource pack in your server.properties file. Copy the appropriate link for the version that suits your world:

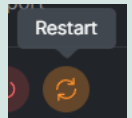
<https://github.com/Goddeh1/USWRP/releases/download/1.1/USWRP-10.zip>

→ **RESOURCE PACK FOR THE 10 PLAYERS VERSION**

<https://github.com/Goddeh1/USWRP/releases/download/1.1/USWRP-25.zip>

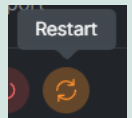
→ **RESOURCE PACK FOR THE 25 PLAYER VERSION**

Go to your Files tab, locate the "server.properties" file (*usually near the bottom*) and look for the "resource-pack=" option (*on a fresh server this will be around line 37*). Lastly, paste the link AFTER the "=" symbol. Then save the file and restart your server!



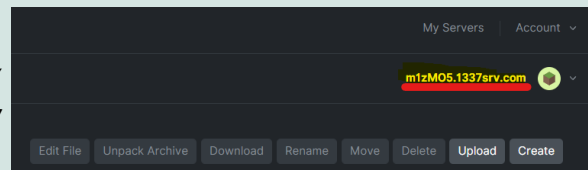
STEP 9 - Paper & Spigot

Install the [USW Resource Pack](#) client side. Download the "USW-ServerLoader.jar" file from the [Patreon](#) download link & drag it into your plug-ins folder on the main server Files tab & restart the server again - this will install the [USW Resource Pack](#) for you! You can use the command /pack to re-download/refresh the pack, and /updateall to update the resource pack for everyone online.



STEP 10

Copy your server address from the top right (*as illustrated in the image - do NOT copy the address from this image, you need your server address*).



STEP 11

Open Minecraft as usual, click Multiplayer → Add Server. Then paste the address you just copied in **STEP 10** into the Server Address box. Set Server Resource Packs to Enabled and click Done. Your server will appear in the list (*it might appear at the bottom*).

STEP 12

If you're not in Survival already when you join or you would like to change game mode, head to the server console & type "op YOUR_USERNAME". Then head back into the world & execute the command /gamemode survival (or whichever game mode you would like to switch to). **If you receive any errors, make sure you (& no one trying to join) are not running Forge - this sometimes causes compatibility issues. If you're getting lag, you can try executing "/function the_ultimate_survival_world:toggle_waterfalls" in Minecraft to help improve performance!** Enjoy The Ultimate Survival World & join the [TrixyBlox Discord](#) for any support requests (discord.gg/TrixyBlox).

Thank you for your patience while we continue working on bug fixes & improving your experience in the world!