

# CHARM PATTERNS by Gertie

## HARLOW PAJAMAS SLEEVE

Sizes 2-20

A PATREON EXCLUSIVE PATTERN PIECE

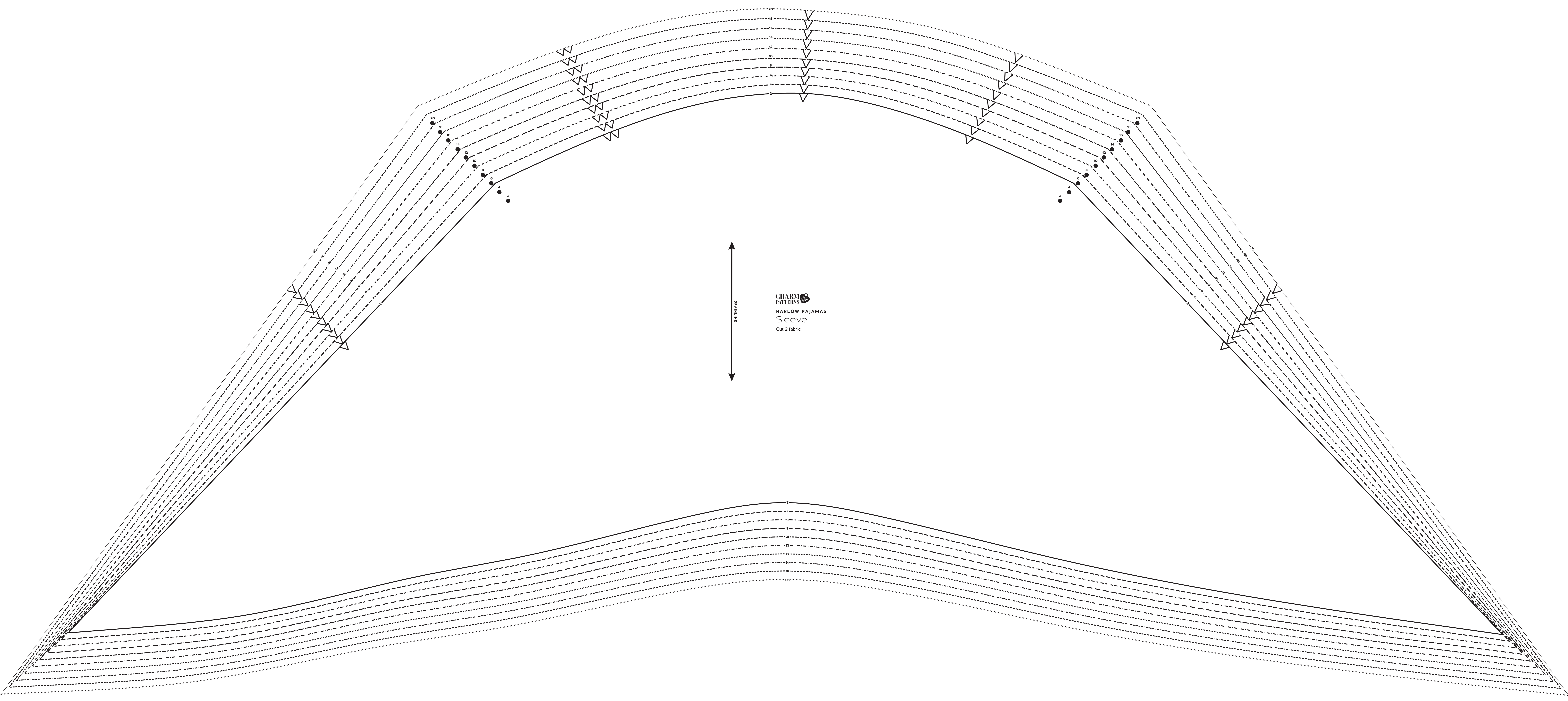
5/8 inch (1.5 cm) seam allowances are included on all pattern pieces.

### PATTERN SIZE KEY

- 2 —————
- 4 - - - - -
- 6 - - - - -
- 8 - - - - -
- 10 - - - - -
- 12 - - - - -
- 14 - - - - -
- 16 - - - - -
- 18 - - - - -
- 20 - - - - -

### SYMBOL KEY

grainline arrow



CHARM PATTERNS  
HARLOW PAJAMAS  
Sleeve  
Cut 2 fabric