

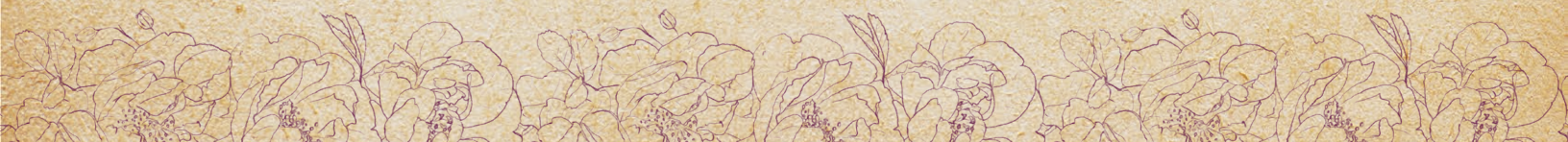


Rizzo

JACKET

A PATREON
EXCLUSIVE
PATTERN

© 2023 Charm Patterns by Gertie

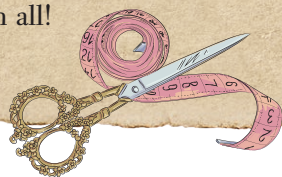




Whether you're a Rizzo, Marty, Frenchie, Jan, or Sandy, I hope you'll roll up your sleeves and join the Charm Ladies gang!

This Eisenhower-style workwear jacket throws out the traditional menswear style lines to create a shape that highlights all of your curves. With a secret interior welt pocket (perfect for a phone, snacks, or other clandestine treats) and a full lining, it's guaranteed to be a go-to staple for the cooler months!

Make one in cotton twill with a satin lining for your own girl gang, or try a plaid tweed for the perfect fall layering piece. Don't forget to share your makes with #rizzojacket and #charmpatterns so I can see them all!

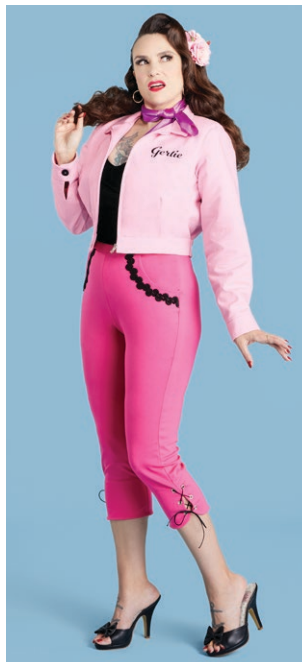
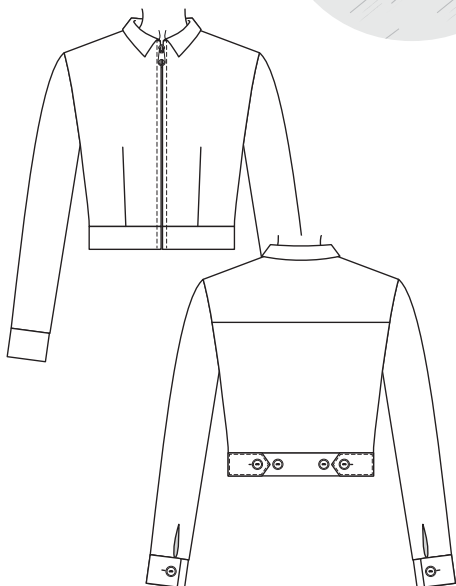
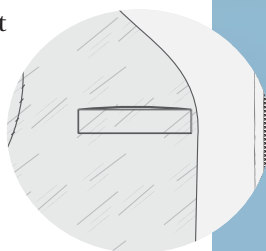


xoxo, Gertie



Key Details

- Workwear-style jacket with a feminine cut
- Fully lined
- Interior welt pocket



SIZE CHART

The Rizzo Jacket is sized in women's US 2–20 and 18–34, A–H cup sizes. Please use the chart below to pick your size. The High Bust measurement should be taken above your breasts and the Full Bust measurement should be taken at the fullest part of your bustline. Take the Waist measurement at the smallest part of your torso. Note that it is best to choose your size by your bust measurements (and add or remove from the side seams at the waist if needed).

Not sure which size range to choose? Read more about our [two size ranges here!](#)



SIZES 2-20	2	4	6	8	10	12	14	16	18	20
High Bust	29 in 73.7 cm	31 in 78.7 cm	33 in 83.8 cm	35 in 88.9 cm	37 in 94 cm	39 in 99 cm	41 in 104.1 cm	43 in 109.2 cm	45 in 114.3 cm	47 in 119.4 cm
Bust A cup	30.5 in 77.5 cm	32.5 in 82.5 cm	34.5 in 87.6 cm	36.5 in 92.7 cm	38.5 in 97.8 cm	40.5 in 102.9 cm	42.5 in 108 cm	44.5 in 113 cm	46.5 in 118.1 cm	48.5 in 123.2 cm
Bust B/C cup	31 in 78.7 cm	33 in 83.8 cm	35 in 88.9 cm	37 in 94 cm	39 in 99 cm	41 in 104.1 cm	43 in 109.2 cm	45 in 114.3 cm	47 in 119.4 cm	49 in 124.5 cm
Bust D/DD cup	32 in 81.3 cm	34 in 86.4 cm	36 in 91.4 cm	38 in 96.5 cm	40 in 101.6 cm	42 in 106.7 cm	44 in 111.8 cm	46 in 116.8 cm	48 in 121.9 cm	50 in 127 cm
Bust F/G cup	33 in 83.8 cm	35 in 88.9 cm	37 in 94 cm	39 in 99 cm	41 in 104.1 cm	43 in 109.2 cm	45 in 114.3 cm	47 in 119.4 cm	49 in 124.5 cm	51 in 129.5 cm
Bust H cup	34 in 86.4 cm	36 in 91.4 cm	38 in 96.5 cm	40 in 101.6 cm	42 in 106.7 cm	44 in 111.8 cm	46 in 116.8 cm	48 in 121.9 cm	50 in 127 cm	52 in 132.1 cm
Waist	24 in 61 cm	26 in 66 cm	28 in 71.1 cm	30 in 76.2 cm	32 in 81.3 cm	34 in 86.4 cm	36 in 91.4 cm	38 in 96.5 cm	40 in 101.6 cm	42 in 106.7 cm
Hips	36 in 91.4 cm	38 in 96.5 cm	40 in 101.6 cm	42 in 106.7 cm	44 in 111.8 cm	46 in 116.8 cm	48 in 121.9 cm	50 in 127 cm	52 in 132.1 cm	54 in 137.2 cm

SIZES 18-34	18	20	22	24	26	28	30	32	34
High Bust	39.5 in 100.3 cm	41.5 in 105.4 cm	43.5 in 110.5 cm	45.5 in 115.6 cm	47.5 in 120.7 cm	49.5 in 125.7 cm	51.5 in 130.8 cm	53.5 in 135.9 cm	55.5 in 141 cm
Bust A/B cup	42.5 in 108 cm	44.5 in 113 cm	46.5 in 118.1 cm	48.5 in 123.2 cm	50.5 in 128.3 cm	52.5 in 133.4 cm	54.5 in 138.4 cm	56.5 in 143.5 cm	58.5 in 148.6 cm
Bust C cup	43 in 109.2 cm	45 in 114.3 cm	47 in 119.4 cm	49 in 124.5 cm	51 in 129.5 cm	53 in 134.6 cm	55 in 139.7 cm	57 in 144.8 cm	59 in 149.9 cm
Bust D/DD cup	44 in 111.8 cm	46 in 116.8 cm	48 in 121.9 cm	50 in 127 cm	52 in 132.1 cm	54 in 137.2 cm	56 in 142.2 cm	58 in 147.3 cm	60 in 152.4 cm
Bust F/G cup	45 in 114.3 cm	47 in 119.4 cm	49 in 124.5 cm	51 in 129.5 cm	53 in 134.6 cm	55 in 139.7 cm	57 in 144.8 cm	59 in 149.9 cm	61 in 154.9 cm
Bust H cup	46 in 116.8 cm	48 in 121.9 cm	50 in 127 cm	52 in 132.1 cm	54 in 137.2 cm	56 in 142.2 cm	58 in 147.3 cm	60 in 152.4 cm	62 in 157.5 cm
Waist	40 in 101.6 cm	42 in 106.7 cm	44 in 111.8 cm	46 in 116.8 cm	48 in 121.9 cm	50 in 127 cm	52 in 132.1 cm	54 in 137.2 cm	56 in 142.2 cm
Hips	48 in 121.9 cm	50 in 127 cm	52 in 132.1 cm	54 in 137.2 cm	56 in 142.2 cm	58 in 147.3 cm	60 in 152.4 cm	62 in 157.5 cm	64 in 162.6 cm

Fabric Notes

We recommend medium- and bottom-weight wovens: cotton sateen, denim, corduroy, and twill; linen and linen blends; and wool suitings, flannel, and tweed. Knits are not recommended for this design.

For the lining, we recommend lightweight silks like charmeuse, crepe de chine, or habotai; lining fabrics like rayon bemberg, acetate, satin, or silky polyester; and silk/cotton blends.

Materials & Notions

- Fabric for the jacket
- Lining fabric
- Thread to match
- Lightweight fusible woven interfacing
- 16-in metal separating zipper
- Two ¾-in buttons for sleeve cuffs
- Four ¾-in buttons for waist tabs

Resources

Here are some of the fabrics and supplies I used for the samples and in the video tutorial. There are lots of places to purchase fabric, so this is solely a guide you can use as a reference:

[Pink Chino Twill](#)

[Satin Lining](#)

Download [“Charm Ladies” .svg file.](#)

Download the font [Number Five Smooth](#) to create your own name graphic to cut with a vinyl cutter.



FIT NOTES

The Rizzo Jacket is a fully-lined, semi-fitted workwear-inspired layering piece with a feminine cut. It has long sleeves and ends just below the natural waist. It is designed to fit with between 4 to 5¾ inches (in) (10.1 to 14.6 cm) of ease in the bust and 6 to 6½ in (15.2 to 16.5 cm) of ease at the waist. If wearing as a layering piece over bulkier garments, you may wish to size up. See the charts to the right for finished garment measurements.

Finished Measurements

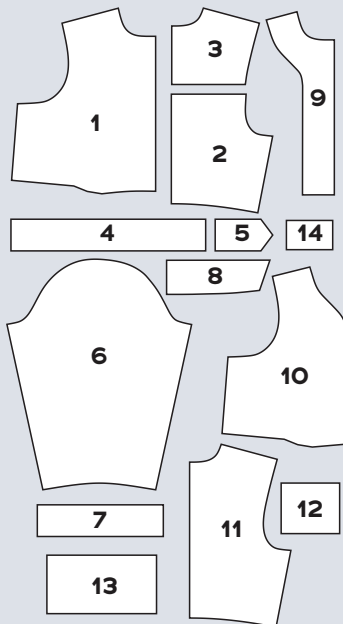
Sizes 2-20	2	4	6	8	10	12	14	16	18	20
Bust A	34.5 in 87.3 cm	36.5 in 92.4 cm	38.5 in 97.5 cm	40.5 in 102.6 cm	42.5 in 107.6 cm	44.5 in 112.7 cm	46.5 in 117.8 cm	48.5 in 122.9 cm	50.5 in 128 cm	52.5 in 133 cm
Bust B/C	35 in 88.6 cm	37 in 93.7 cm	39 in 98.7 cm	41 in 103.8 cm	43 in 108.9 cm	45 in 114 cm	47 in 119.1 cm	49 in 124.1 cm	51 in 129.2 cm	53 in 134.3 cm
Bust D/DD	36 in 91.1 cm	38 in 96.2 cm	40 in 101.3 cm	42 in 106.4 cm	44 in 111.4 cm	46 in 116.5 cm	48 in 121.6 cm	50 in 126.7 cm	52 in 131.8 cm	54 in 136.8 cm
Bust F/G	37 in 93.7 cm	39 in 98.7 cm	41 in 103.8 cm	43 in 108.9 cm	45 in 114 cm	47 in 119.1 cm	49 in 124.1 cm	51 in 129.2 cm	53 in 134.3 cm	55 in 139.4 cm
Bust H	38 in 96.2 cm	40 in 101.3 cm	42 in 106.4 cm	44 in 111.4 cm	46 in 116.5 cm	48 in 121.6 cm	50 in 126.7 cm	52 in 131.8 cm	54 in 136.8 cm	56 in 141.9 cm
Bottom Opening/Waist	30.5 in 77.5 cm	32.5 in 82.6 cm	34.5 in 87.6 cm	36.5 in 92.7 cm	38.5 in 97.8 cm	40.5 in 102.9 cm	42.5 in 108 cm	44.5 in 113 cm	46.5 in 118.1 cm	48.5 in 123.2 cm
CB Length	15.75 in 39.7 cm	15.75 in 39.8 cm	15.75 in 40 cm	15.75 in 40.2 cm	16 in 40.3 cm	16 in 40.5 cm	16 in 40.6 cm	16 in 40.8 cm	16.25 in 41 cm	16.25 in 41.1 cm
Bicep	14.25 in 35.9 cm	15 in 37.8 cm	15.75 in 39.7 cm	16.5 in 41.6 cm	17.25 in 43.5 cm	18 in 45.4 cm	18.75 in 47.3 cm	19.5 in 49.2 cm	20.25 in 51.1 cm	21 in 53 cm

Sizes 18-34	18	20	22	24	26	28	30	32	34
Bust A/B	48.25 in 122.2 cm	50.25 in 127.3 cm	52.25 in 132.4 cm	54.25 in 137.5 cm	56.25 in 142.6 cm	58.25 in 147.6 cm	60.25 in 152.7 cm	62.25 in 157.8 cm	64.25 in 162.9 cm
Bust C	48.75 in 123.5 cm	50.75 in 128.6 cm	52.75 in 133.7 cm	54.75 in 138.7 cm	56.75 in 143.8 cm	58.75 in 148.9 cm	60.75 in 154 cm	62.75 in 159.1 cm	64.75 in 164.1 cm
Bust D/DD	49.75 in 126 cm	51.75 in 131.1 cm	53.75 in 136.2 cm	55.75 in 141.3 cm	57.75 in 146.4 cm	59.75 in 151.4 cm	61.75 in 156.5 cm	63.75 in 161.6 cm	65.75 in 166.7 cm
Bust F/G	50.75 in 128.6 cm	52.75 in 133.7 cm	54.75 in 138.7 cm	56.75 in 143.8 cm	58.75 in 148.9 cm	60.75 in 154 cm	62.75 in 159.1 cm	64.75 in 164.1 cm	66.75 in 169.2 cm
Bust H	51.75 in 131.1 cm	53.75 in 136.2 cm	55.75 in 141.3 cm	57.75 in 146.4 cm	59.75 in 151.4 cm	61.75 in 156.5 cm	63.75 in 161.6 cm	65.75 in 166.7 cm	67.75 in 171.8 cm
Bottom Opening/Waist	46 in 116.8 cm	48 in 121.9 cm	50 in 127 cm	52 in 132.1 cm	54 in 137.2 cm	56 in 142.3 cm	58 in 147.3 cm	60 in 152.4 cm	62 in 157.5 cm
CB Length	17.5 in 44.5 cm	17.75 in 44.8 cm	17.75 in 45.1 cm	18 in 45.4 cm	18 in 45.7 cm	18.25 in 46 cm	18.25 in 46.4 cm	18.5 in 46.7 cm	18.5 in 47 cm
Bicep	17.5 in 44.1 cm	18.25 in 46 cm	19 in 47.9 cm	19.75 in 49.8 cm	20.5 in 51.8 cm	21.25 in 53.7 cm	22 in 55.6 cm	22.75 in 57.5 cm	23.5 in 59.4 cm



Pattern Pieces

1. **Jacket Front**
Cut 2 fabric
2. **Jacket Back**
Cut 1 fabric on fold
3. **Yoke**
Cut 1 fabric on fold
4. **Waistband**
Cut 2 fabric on fold, 1 interfacing on fold
5. **Waist Tab**
Cut 4 fabric, 2 interfacing
6. **Sleeve**
Cut 2 fabric, 2 lining
7. **Sleeve Cuff**
Cut 4 fabric, 2 interfacing
8. **Collar**
Cut 2 fabric on fold, 1 interfacing on fold
9. **Front Facing**
Cut 2 fabric, 2 interfacing
10. **Lining Front**
Cut 2 lining
11. **Lining Back**
Cut 1 lining on fold
12. **Welt Pocket**
Cut 1 lining, 1 interfacing
13. **Welt Pocket Bag**
Cut 1 lining
14. **Welt Pocket Interfacing**
Cut 1 interfacing



REQUIRED YARDAGE & CUTTING LAYOUTS

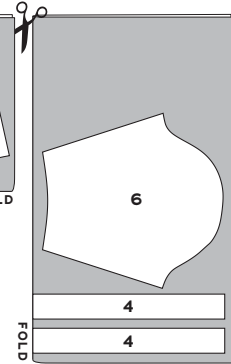
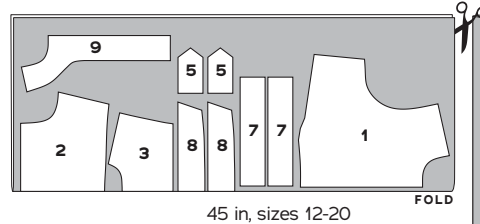
NOTE: All pattern pieces are shown in a “without nap” layout. You may need additional yardage for directional prints, stripes, plaids, and other prints that need to be matched across seamlines.

Sizes 2-20

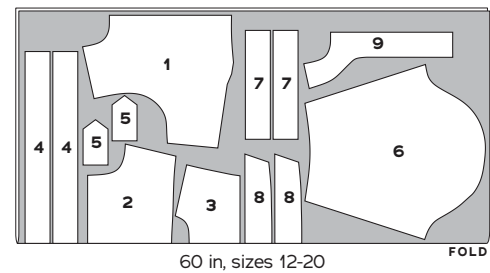
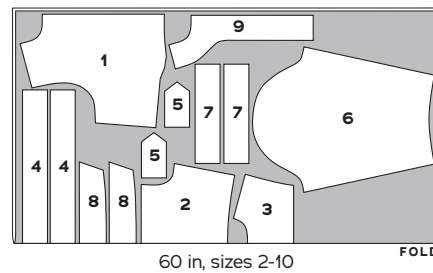
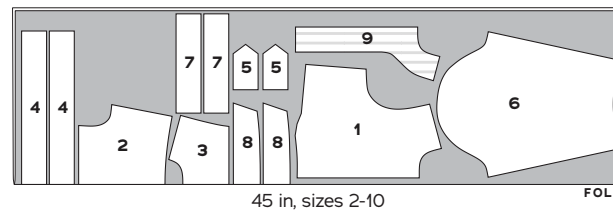
Fabric

(1, 2, 3, 4, 5, 6, 7, 8, 9)

	Sizes 2-10	Sizes 12-20
45 in	2¼ yds 2.1 m	3 yds 2.7 m
60 in	1⅝ yds 1.5 m	1¾ yds 1.6 m



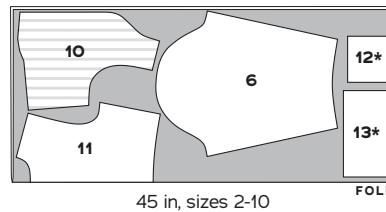
Because of the length of piece 4, this layout is cut on a crosswise fold. The full width of the fabric is opened out and a fold is made perpendicular to the selvages.



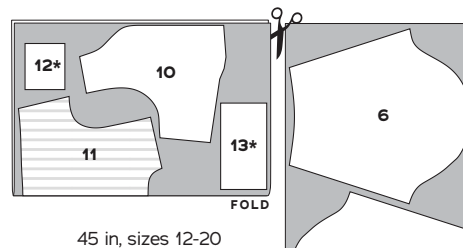
Lining

(6, 10, 11, 12, 13)

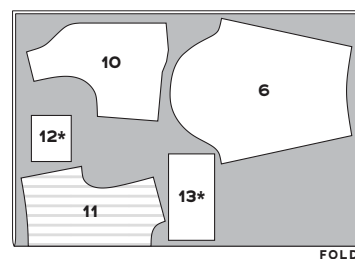
	Sizes 2-10	Sizes 12-20
45 in	1½ yds 1.4 m	1¾ yds 1.6 m
60 in	1⅜ yds 1.3 m	1⅜ yds 1.3 m



*Cut 1 only of pieces 12 and 13.





45 in, sizes 12-20



60 in, sizes 2-20

Open this portion flat to cut from a single layer of fabric.

KEY TO LAYOUTS

-  Right side of pattern piece
-  Wrong side of pattern piece

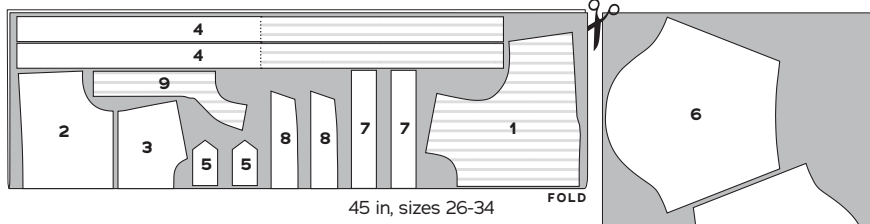
Be sure to note whether the pieces are cut on a double or single layer of fabric. For a double layer, there will be a note indicating FOLD on the layout.

REQUIRED YARDAGE & CUTTING LAYOUTS

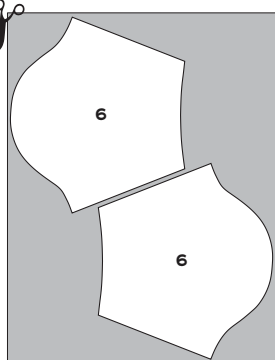
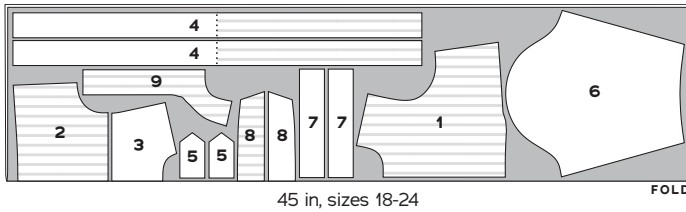
Sizes 18-34

Fabric (1, 2, 3, 4, 5, 6, 7, 8, 9)

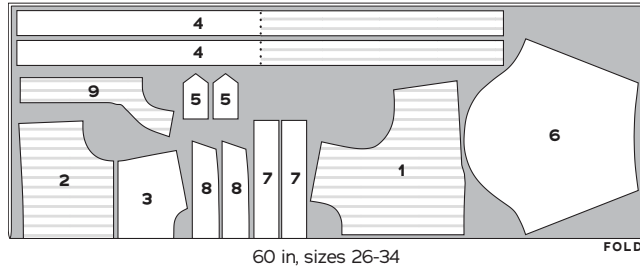
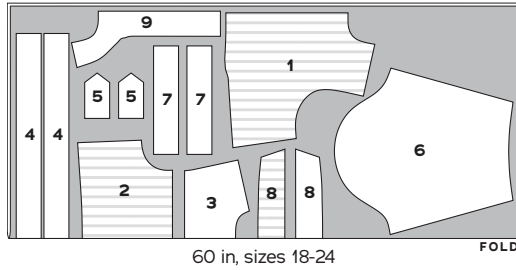
	Sizes 18-24	Sizes 26-34
45 in	2½ yds 2.3 m	3⅞ yds 2.8 m
60 in	1⅞ yds 1.7 m	2⅜ yds 2.2 m



*Cut piece 4 as one piece, on only one layer of fabric. Flip over as indicated on dotted line to cut opposite half.

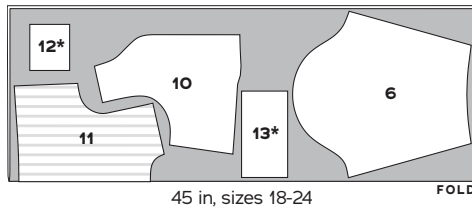
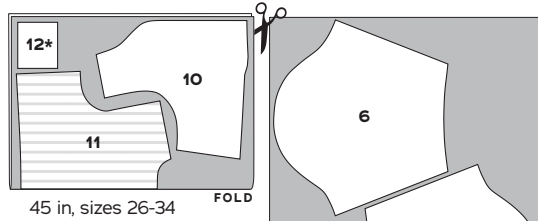


Open this portion flat to cut from a single layer of fabric.

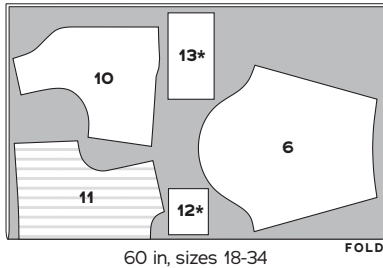


Lining (6, 10, 11, 12, 13)

	Sizes 18-24	Sizes 26-34
45 in	1¾ yds 1.6 m	2 yds 1.8 m
60 in	1½ yds 1.4 m	1½ yds 1.4 m



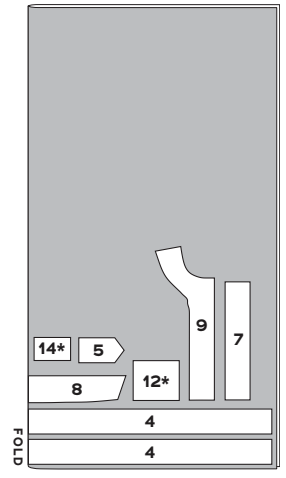
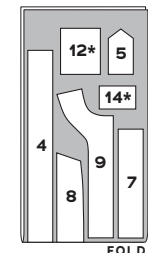
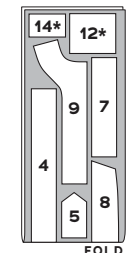
*Cut 1 only of pieces 12 and 13.



All Sizes

Interfacing (4, 5, 7, 8, 9, 12, 14)

	Sizes 2-10	Sizes 12-24	Sizes 26-34
60 in	¾ yd 0.4 m	½ yd 0.5 m	1⅞ yds 1.7 m



Because of the length of piece 4, this layout is cut on a crosswise fold. The full width of the fabric is opened out and a fold is made perpendicular to the selvages.

SEWING INSTRUCTIONS

BEFORE SEWING

Transferring marks: use dressmaker's tracing paper and a tracing wheel to transfer all pattern markings to the wrong side (WS) of your fabric. Mark pattern notches by snipping into the seam allowance with the tip of your scissors.

Interfacing: some of the pattern pieces need to be stabilized with fusible interfacing prior to sewing. Follow the interfacing cutting instructions on the pattern pieces. Apply fusible interfacing to the WS of the fabric, using a press cloth and steam. Do not rub your iron back and forth; lift it up and press it down for several seconds at a time until interfacing is fully adhered.

NOTES

- 5/8-in (1.5 cm) seam allowances are included on all pattern pieces, except where otherwise noted.
- It's unnecessary to finish the seam allowances, as they will be completely enclosed by the lining.
- If you'd like to make your own Charm Ladies jacket, we have included an SVG file in the resources, as well as a link to the font used to make the names for the front of the jacket so you can personalize yours as well. Use an iron-on vinyl and a die-cutting machine like a Cricut to cut your files in the vinyl. Apply the vinyl carefully using a press cloth.

SEW THE JACKET

Welt Pocket

1. Apply interfacing: fuse Welt Pocket Interfacing (14) to WS of left Lining Front (10) (as worn; keep in mind that the right side (RS) of the lining fabric will be facing your body when worn), covering welt pocket placement rectangle. If the welt placement rectangle is not visible through the interfacing, re-mark it on the



WS using chalk or a water-soluble fabric-marking pen.
NOTE: if you are left-handed, you may wish to place your pocket on the right lining front (as worn).

2. Attach welt pocket: pin interfaced Welt Pocket (12) to lining front, RS together, matching welt pocket placement marks. Stitch only the top and bottom long edges of the marked rectangle, starting/stopping and backstitching precisely at each corner. Cut a slit through all layers of fabric along the center cutting line between the two stitching lines, stopping at the diagonal cutting lines on each short end of the rectangle. From the opening, clip to each corner along diagonal lines as close as possible to the stitching lines without actually cutting the stitching. From the WS, press just the welt pocket's cut seam allowances open at the top and bottom of the rectangle.

Jacket

3. Create the welt: reach through the cut opening to pull the welt pocket through to the WS of the lining front. Roll the seamline just to the WS of the lining and press the welt pocket flat to the lining front, WS together, making sure it creates a neat rectangular opening. From the lining front WS, press the bottom of the welt pocket up over the opening to create a sharp crease. Using chalk or a water-soluble fabric-marking pen on the pocket WS, draw a line to mark the top of the welt opening. Fold the welt pocket down at the marked line to create the welt and pin into place. From the lining front RS, adjust the welt until it is straight and even. Press from the WS to crease.

4. Secure the welt pocket opening: with the lining front RS up, fold the lining front away from the welt pocket to expose the tiny triangle at each end of the welt pocket opening. Stitch the tiny triangle to the welt pocket as close to the lining front/base of the triangle as possible, backstitching at both ends. From the lining RS, stitch in the ditch around the welt opening to secure.

5. Attach the top of the welt pocket bag: keeping lining front free, pin the top of the Welt Pocket Bag (13) to the top of just the welt pocket fabric, RS together and matching notches. Stitch. Press seam allowances toward the pocket bag. From the lining front WS, press the welt pocket's top down, forming a crease at the top of the welt opening.

6. Attach the bottom of the welt pocket bag: pin the bottom of the welt pocket bag to the bottom of the welt pocket fabric, RS together, keeping lining front free. Stitch. Pull the pocket bag down as far as it will go, and press flat, pressing all seam allowances down toward the lining hem.

7. Finish and secure the welt pocket: pin the welt pocket side seams RS together to finish the pocket bag. Stitch the pocket bag closed, being careful not to catch the lining front in the stitches.

8. Attach front facing: pin Front Facings (9) to lining fronts, RS together and matching notches. Clip curves if needed. Stitch lining fronts to front facings, being careful not to catch welt pocket bag in your stitches. Grade seam allowances. Clip/notch into curves every ½ in (1.3 cm). Press seam allowances toward facing. Press center front (CF) seam allowance on front facings ¾ in (1.9 cm) to WS.

1. Staystitch neckline: on Jacket Front (1), using a ½-in (1.3 cm) seam allowance, staystitch front neckline from each shoulder to the CF. Repeat staystitching on Yoke (3) neckline and Lining Back (11) neckline, stitching from each shoulder to center back (CB).

2. Sew darts: on jacket front, bring dart legs RS together, pinning along marked lines. Stitch along marked lines from dart base to dart point. Backstitch at the beginning but not at the end, leaving a thread tail a few inches long. Tie thread tails by hand. Press darts towards CF. Repeat for lining fronts, making sure the welt pocket bag doesn't get caught in the dart.

3. Assemble jacket back: pin upper edge of Jacket Back (2) to yoke lower edge, RS together. Stitch. Press seam allowances down.

4. Sew shoulder seams: pin jacket fronts to jacket back unit at shoulder seam, RS together, matching notches. Stitch. Press seam allowances open. Repeat for lining, sewing front lining to back lining RS together at shoulder seams, matching notches to seams.

5. Sew side seams: with RS together, pin jacket fronts to jacket back unit at side seams. Stitch side seams and press seam allowances open. Repeat for lining.

6. Staystitch lining armscyes: using a ⅝-in (1.5 cm) seam allowance, staystitch jacket lining at armscyes. Clip every ½ in (1.3 cm) and press to WS, rolling the stitching line just to WS.

7. Assemble waistband: pin Waistbands (4) RS together along one long edge, matching notches. Stitch the long edge only. Grade seam allowances so the outer (interfaced) waistband is wider and the inner waistband is narrower. Press under seam allowance ½ in (1.3 cm) on the long raw edge of the inner (uninterfaced) waistband.

8. Understitch waistband: with waistband opened out and seam allowances underneath the inner waistband, stitch along RS of inner waistband ⅛ in (3 mm) from the seamline, catching seam allowances in stitching. Press inner waistband, rolling seamline slightly to WS so it is hidden inside the outer waistband.

9. Attach waistband: pin unpressed long raw edge of outer waistband to lower edge of jacket unit, RS together, matching notches to side seams. Stitch. Grade seam allowances and press toward waistband.

Zipper

1. Stabilize zipper opening: apply 1¼-in-wide (3 cm) strips of fusible stay tape or interfacing to the WS of jacket opening at CF, starting/stopping interfacing at the waistband seam.

2. Prepare jacket front: press jacket front seam allowances (including outer waistband) ⅝ in (1.5 cm) to WS. Using a fabric marker or tailor's chalk, draw in the neckline seam allowance; this will mark the zipper top stop.

3. Pin zipper: open zipper, then fold the inner waistband out of the way and pin RS of each side of zipper to WS of jacket CF seam allowances, aligning edge of zipper teeth with fold. Make sure the waistband seam lines match. The bottom stop of the zipper should be aligned just above the outer waistband lower edge, and the zipper top stop should be aligned just below the marked neckline seam allowance. Baste the zipper tape to both CF edges, stitching through the tape and seam allowance only. **NOTE:** if your zipper is too long, you will need to shorten the zipper by removing teeth from the zipper upper edge and adding a new zipper top stop.

4. Sew zipper: using a zipper foot, topstitch each side of the zipper from bottom to top through all layers ⅜ in (1 cm) from the CF pressed edge, moving the zipper pull out of the way as needed.

Collar

1. Assemble collar: pin interfaced Collar (8) to uninterfaced collar, RS together. Stitch around straight edge and sides, leaving notched edge unsewn. Pivot at corners and backstitch to reinforce corner points. Grade seam allowances, trimming the uninterfaced collar seam allowance to ⅛ in (3 mm) and the interfaced collar seam allowance to ¼ in (6 mm). Trim corners to reduce bulk. Turn collar RS out and use a point turner or a pin to create crisp corners.

2. Understitch collar: with collar opened out and seam allowances underneath, stitch along RS of uninterfaced collar ⅛ in (3 mm) from the seamline, catching seam allowances in stitching. Start understitching just above CF opening and end at opposite side, breaking stitching at points as necessary. Press collar flat, rolling seamline slightly so it is hidden on the underside (uninterfaced side) of collar. Baste collar together along raw edge.

3. Attach collar: pin collar to jacket neckline, with the uninterfaced side of the collar and jacket RS together. Match collar notches to jacket shoulder seams and collar circles to jacket circles. Collar does not extend to CF of jacket. If needed, clip back neckline of jacket to ease. Baste collar to jacket.

Sleeves

1. Sew sleeve seam: pin Sleeve (6) RS together along underarm seam. Stitch. Press seam allowances open. Repeat for sleeve lining.

2. Sew sleeve placket opening: pin sleeve to sleeve lining at placket opening, RS together. Stitch sleeve placket opening starting at one end, pivoting precisely at the point, and continuing down the other side. Cut sleeve placket along center cut line, being careful not to cut past your stitches. Turn sleeve RS out and press sleeve placket flat, rolling the lining just to the WS. **NOTE:** while not necessary, a small square of interfacing applied to the fabric WS at the sleeve placket point before stitching can provide additional reinforcement.

3. Baste sleeve to lining: pin sleeve to sleeve lining, WS together, and baste at sleeve hem and armhole. Treat as one unit.

4. Assemble sleeve cuff: pin interfaced Sleeve Cuff (7) to uninterfaced sleeve cuff, RS together, matching notches. Stitch around the cuff starting at the underlap notch on the long edge, traveling along the short edge, entire opposite long edge, opposite short edge, and ending at the overlap notch on the long edge. Clip at underlap and overlap notches. Grade seam allowances so the interfaced outer cuff is slightly wider than the uninterfaced cuff's seam allowance. Trim corners. Turn cuff RS out. Press cuff flat, rolling seamline toward

uninterfaced inner cuff. Turn under seam allowance $\frac{1}{2}$ in (1.3 cm) to the WS on the raw edge of the uninterfaced inner sleeve cuff between clipped notches. Press.

5. Attach sleeve cuff: pin outer sleeve cuff raw edge to sleeve hem, RS together, matching cuff notches to sleeve placket opening, sleeve notch, and sleeve seam. Stitch, being careful not to catch the inner sleeve cuff in your stitches. Grade seam allowances as in previous step and press toward cuff.

6. Finish sleeve cuff: pin inner sleeve cuff's pressed seam allowance to the WS, enclosing graded seam allowances of sleeve and cuff. Stitch in the ditch from the RS, securing the seam allowance inside. Alternatively, slipstitch closed by hand from the WS.

7. Ease sleeve cap: using a 4-mm to 5-mm stitch length, sew two lines of stitching on each sleeve cap between notches. Sew the first using $\frac{1}{2}$ -in (1.3 cm) seam allowance and the second using $\frac{1}{4}$ -in (6 mm) seam allowance. Pull up bobbin threads to gather.

8. Set sleeves into jacket: pin each sleeve to jacket armhole RS together, matching underarm seams and notches. Distribute sleeve fullness evenly between notches. With the sleeve on the bottom and the jacket on top, stitch the entire sleeve with a $\frac{5}{8}$ -in (1.5 cm) seam allowance, starting at the underarm. Reinforce the underarm between notches by stitching again $\frac{1}{8}$ in (3 mm) outside the seamline. Clip into curves. Trim sleeve seam allowances and press toward jacket.

Lining

1. Sew lining to jacket: with RS together, pin lining to jacket along neckline edge, matching notches and seams, and sandwiching collar inside. The facing at CF will extend $\frac{5}{8}$ in (1.5 cm) past the jacket's CF finished edge. With the facing CF seam allowance opened up, stitch entire neckline. Grade and clip curves every $\frac{1}{2}$ in (1.3 cm). Turn jacket to RS.

Finish Jacket

1. Assemble waist tabs: pin interfaced Waist Tab (5) to uninterfaced waist tab, RS together. Stitch around the waist tab, pivoting at corners and leaving the short straight edge unstitched. Grade seam allowances and trim corners. Turn waist tab RS out. Press flat. Press seam allowance on the raw edge of the waist tab to WS, so it is inside the tab.

2. Sew waist tabs: topstitch around the entire waist tab, enclosing the seam allowances inside. Press flat.

3. Sew buttons and buttonholes: using pattern markings as placement guide, sew buttons by hand or machine to sleeve cuff underlap and waistband. Using buttons as a guide, sew buttonholes by machine to sleeve cuff overlap and waist tabs.

4. Attach waist tabs: pin straight short edge of each waist tab to RS of waistband at circles, just forward of the side seam. Topstitch short straight edge of waist tab, backstitching at beginning and end of stitches, to attach to the waistband.

5. Finish lining: pin and slipstitch armscye lining to just cover the jacket sleeve seam allowance. Pin and slipstitch pressed CF edge of front facing to WS of zipper tape.

6. Sew waistband: with jacket RS out, pin pressed edge of inner waistband to RS of jacket lining along the waistband seamline, enclosing seam allowances inside the waistband. Stitch in the ditch along the waistband upper edge from the RS, securing the seam allowance inside. Alternatively, slipstitch closed by hand from the WS.

Enjoy your fresh new Rizzo Jacket!

PATTERN PIECE LOCATION GUIDE

Here is a list to help you locate the pattern pieces on the letter-size tiled pages and A0 pattern sheets.
The tiled pieces and A0 sheets are included as separate pdf files as part of this digital pattern.

SIZES 2-20

PC#	Piece Name	Tiled	A0
1	Jacket Front, A Cup	2-4, 14-15	1
1	Jacket Front, B/C Cup	4-5, 15-17	1
1	Jacket Front, D/DD Cup	26-28, 38-39	1
1	Jacket Front, F/G Cup	39-41, 50-53	1
1	Jacket Front, H Cup	46-48, 58-60	3
2	Jacket Back	28-30, 40-41	3
3	Yoke	30-31	3
4	Waistband	25, 37, 49	1
5	Waist Tab	41	1
6	Sleeve	31-34, 43-46, 55-58	3
7	Sleeve Cuff	37, 49	3
8	Collar	56-57	2
9	Front Facing	13-14, 25, 37	1
10	Lining Front, A Cup	9-11, 21-23	2
10	Lining Front, B/C Cup	10-12, 23-24	2
10	Lining Front, D/DD Cup	6-7, 18-20	2
10	Lining Front, F/G Cup	7-9, 19-21	2
10	Lining Front, H Cup	34-36, 47-48	3
11	Lining Back	41-43, 53-55	2
12	Welt Pocket	50	1
13	Welt Pocket Bag	1, 13	2
14	Welt Pocket Interfacing	55	1

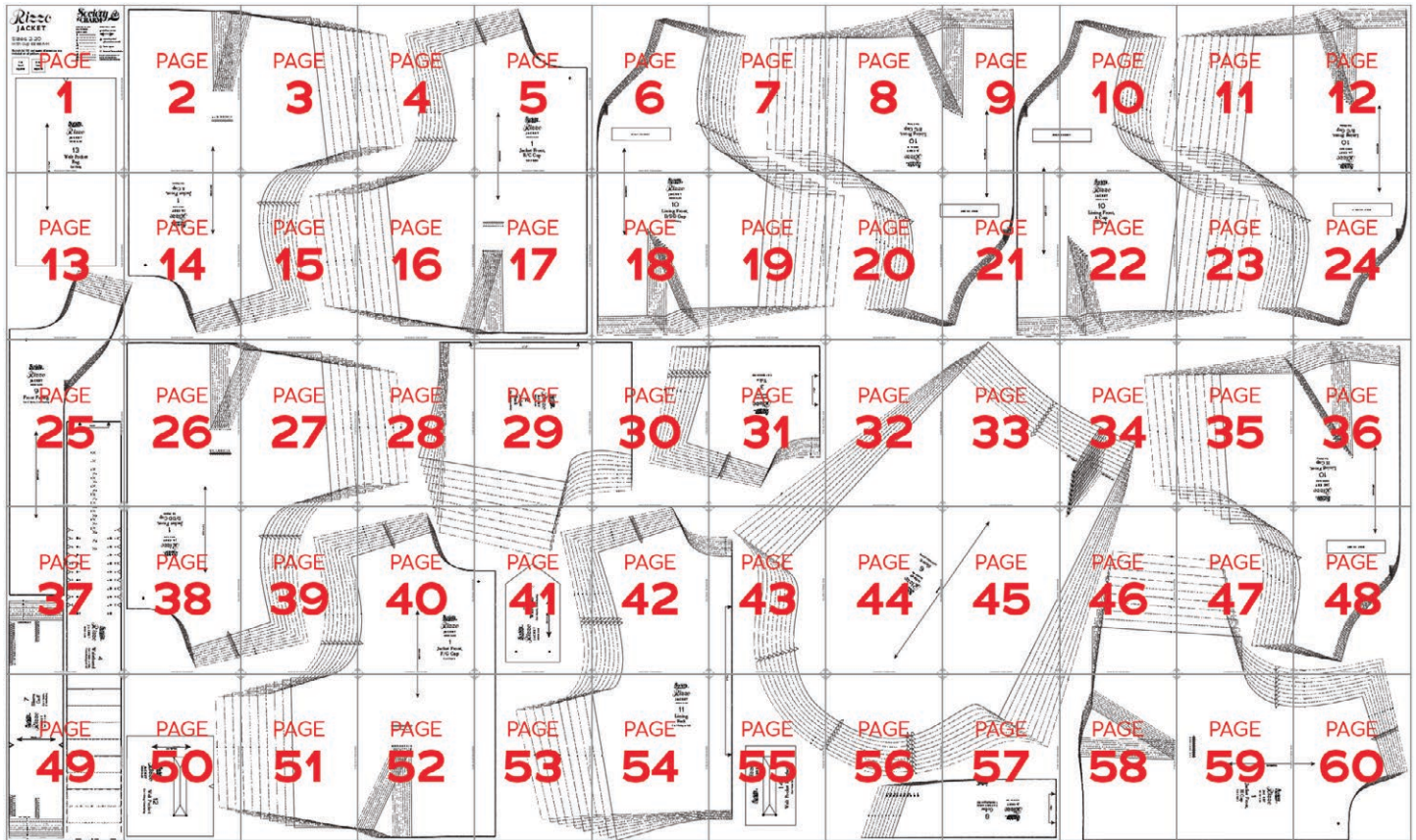
SIZES 18-34

PC#	Piece Name	Tiled	A0
1	Jacket Front, A/B Cup	1-3, 13-15, 26-27	1
1	Jacket Front, C Cup	25-27, 37-39	1
1	Jacket Front, D/DD Cup	4-6, 16-18, 29-30	1
1	Jacket Front, F/G Cup	28-30, 40-42	1
1	Jacket Front, H Cup	7-9, 19-21, 32-33	2
2	Jacket Back	55-57, 67-69	4
3	Yoke	43-45, 55-57	4
4	Waistband	1-5	4
5	Waist Tab	7	4
6	Sleeve	46-48, 57-60, 70-72	3
7	Sleeve Cuff	2-4	4
8	Collar	8-9	2
9	Front Facing	4-7	3
10	Lining Front, A/B Cup	10-12, 22-23	2
10	Lining Front, C Cup	23-24, 34-36	2
10	Lining Front, D/DD Cup	49-50, 61-63	3
10	Lining Front, F/G Cup	50-52, 63-64	3
10	Lining Front, H Cup	53-54, 65-67	4
11	Lining Back	31-33, 43-45	2
12	Welt Pocket	72	4
13	Welt Pocket Bag	42-43, 54-55	4
14	Welt Pocket Interfacing	70	4



TILING MAPS

Sizes 2-20



HOW TO USE THIS PATTERN

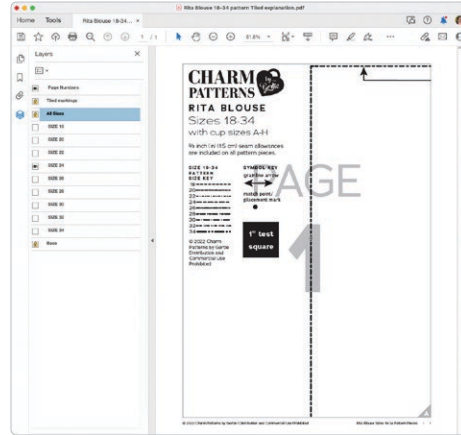
The pattern pieces are tiled so you can print them on Letter (8½" x 11") or A4 size paper. You can also send the A0 pattern sheet PDF to a local or online printer (like ThePlottedPattern.com) to print on large sheets (36" x 48" for U.S. or A0 for international).

This pattern includes size layers. To get the best results, open either the Tiled or A0 pattern pieces PDF in [Acrobat Reader](#).

Open the Layers Palette (View>Show/Hide>Navigation Panes>Layers) and hide all of the layer(s) except for the ones you want to print by clicking on the eye icon.

The All Sizes and Tiled Markings layers have general pattern information and will always print.

You may choose to turn off the Page Numbers layer. The page numbers will still appear at the bottom of each page in the footer.



WORKING WITH THE TILED PIECES

Go to File>Print and change the page range to the pages you need for the pieces you've chosen (see Pattern Pieces Printing Index). Make sure the Page Sizing settings to 100% or Actual Size. Test this after printing by measuring the 1" test box on the first page of the pattern pieces.

Cut apart any pattern pieces that share a page, then fold back or cut off the page margins on each page as marked.

Match the letters in the gray corner diamonds. Tape the pages together, butting up the folded or cut page edges with the gray margin lines.

MORE FROM GERTIE

[At CharmPatterns.com](http://CharmPatterns.com): Shop my sewing patterns and accessories.

[On YouTube](#): Learn beginner and advanced sewing skills and techniques through my tutorials and watch episodes of my Gertie's World series.

[On Instagram](#): Stay in the loop and get inspired.

[On Patreon](#): Access monthly patterns and tutorial videos.

