

Before & After

# HGTV Library

## Episode 215

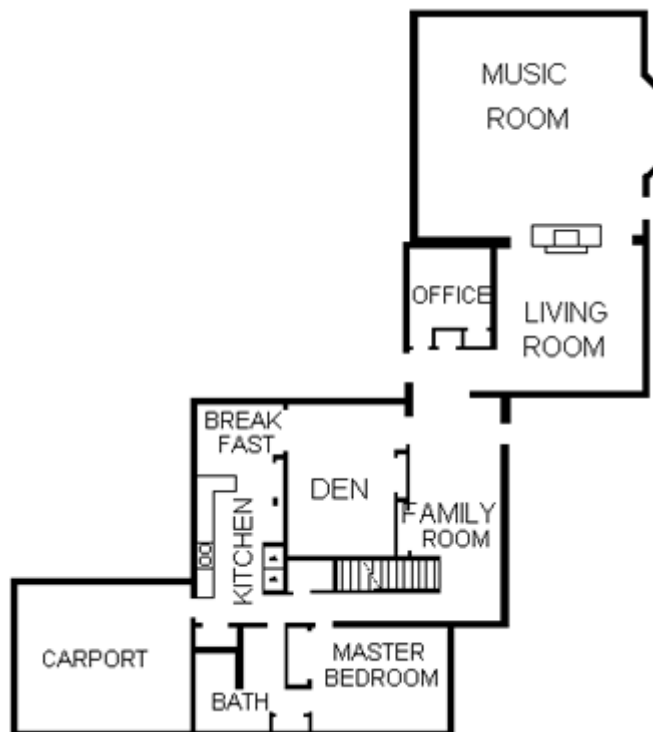
Before



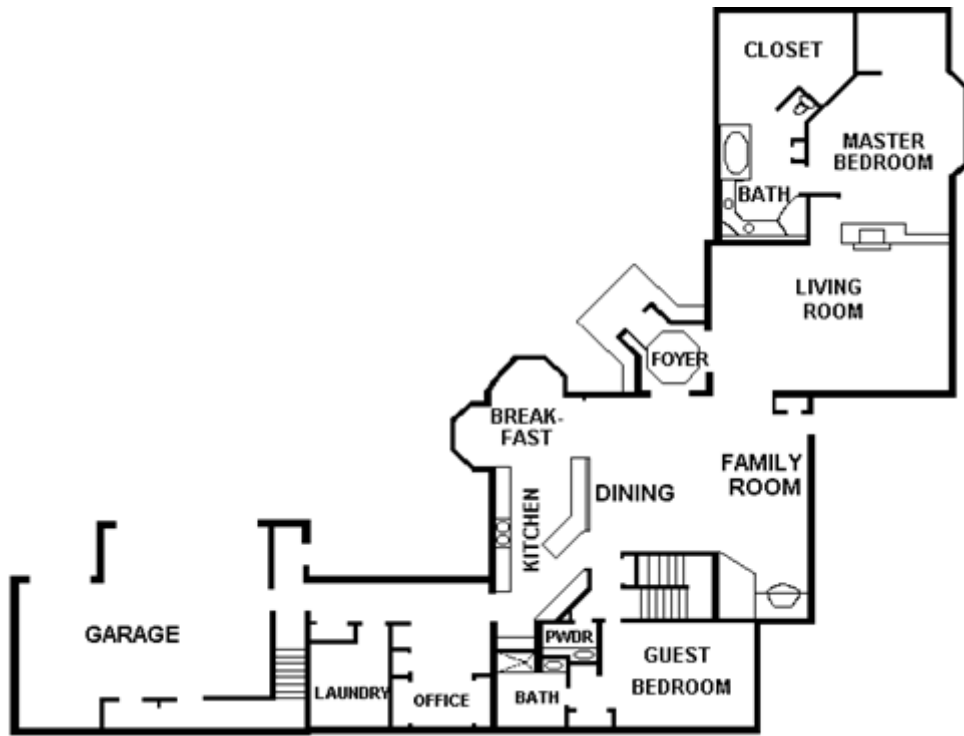
After



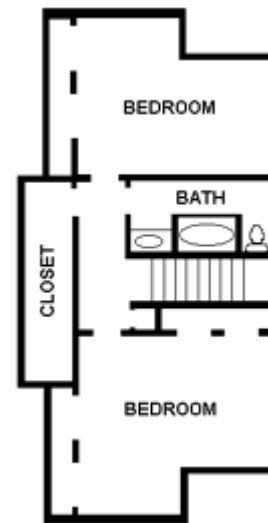
Before First Floor



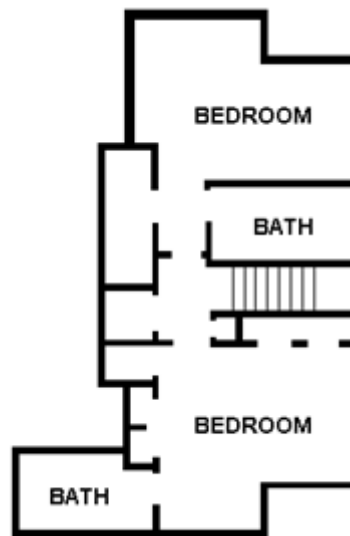
After First Floor



Before  
Second Floor



After  
Second Floor



## **Architect/Contractor:**

Arie Kohn Architects, P.C.  
Contact: Arie Kohn  
541 Village Trace  
Marietta, GA 30067  
Phone: 770-952-1995  
E-mail: [akohnarch@aol.com](mailto:akohnarch@aol.com)

## **Photo Segment Designers/Builders:**

Plekkenpol Builders  
401 East 78th Street  
Bloomington, MN 55420  
Phone: 612-888-2225

## **Products and Services:**

Solatube Miracle Skylights:

Carolina Solar Lighting  
Contact: Dan Russell or Patrick McCoy  
9 Cherry Cove Lane  
Taylor, SC 29687  
Main Phone: 864-895-5700  
Atlanta Office: 770-788-8877  
Fax: 864-895-2814  
E-mail: [Solatube12@aol.com](mailto:Solatube12@aol.com)  
Web site: [www.solatube12.com](http://www.solatube12.com)

Custom 100 percent vinyl flooring made to look like hardwood:

Amtico International Inc.  
Contact: Susan Voss  
Amtico Studio  
6480 Roswell Road  
Atlanta, GA 30328  
Toll-free: 1-800-291-9885  
Fax: 404-267-1901  
E-mail: [info@amtico.com](mailto:info@amtico.com)  
Web site: [www.amtico.com](http://www.amtico.com)  
Apollo motif, Marquetry border, washed teak stripwood with tick finish

Furniture:

Ethan Allen Home Furnishings  
Contact: Kelly Maicon  
Ethan Allen Drive  
Danbury, CT 06811  
Toll-free: 1-800-228-9229  
Web site: [www.ethanallen.com](http://www.ethanallen.com)

Custom window treatments:

Hunter Douglas Window Fashions  
Contact: Customer Service Center  
One Duette Way  
Broomfield, CO 80020  
Toll-free: 1-800-937-STYLE (1-800-937-7895)  
Web site: [www.hunterdouglas.com](http://www.hunterdouglas.com)

Luminette Privacy Sheers, Silhouette window shadings, Palm Beach Custom Shutter, Jubilance Roman shades and Country Woods wood blinds

Various kitchen and bath products:

Kohler Company  
Contact: John Engberg  
444 Highland Drive  
Kohler, WI 53044  
Phone: 920-457-4441 ext. 72488  
Fax: 920-459-1623  
Web site: [www.kohlerco.com](http://www.kohlerco.com)

Stone furnishings:

International Stone  
Contact: Alvin Shao  
2220 Northmont Parkway #300  
Duluth, GA 30096  
Phone: 770-418-9710  
Fax: 770-418-9424  
E-mail: [Ashao@intlstone.com](mailto:Ashao@intlstone.com)

Cast stone planters, cast aluminum love seat:

Four Seasons Pottery  
Contact: Ernie Goodwin  
336 Hammond Drive  
Atlanta, GA 30328  
Phone: 404-252-3411  
Fax: 404-252-2963

Plantings, trees, sod, mulch, and stone patio:

Howell Landscaping of Georgia, Inc.  
Contact: Caroll Howell  
800 Curie Drive  
Alpharetta, GA 30005  
Phone: 678-297-2068  
Fax: 678-297-2033  
E-mail: [holandga@ailcom.net](mailto:holandga@ailcom.net)  
Web site: [www.hlog.com](http://www.hlog.com)

Ultramax double-hung windows, picture windows, sliders, and circle tops:

Alside Windows  
Contact: Mike Chambers  
4850 North Church Lane  
Sraypna, GA 30080  
Phone: 404-794-4551  
Fax: 404-794-4557  
E-mail: [information@alside.com](mailto:information@alside.com)  
Web site: [www.alside.com](http://www.alside.com)

Structural engineering and design, pre-construction and framing inspections:

Michael Quinn & Associates, PC  
Contact: Michael Quinn  
2626 School Drive  
Atlanta, GA 30360  
Phone: 770-452-0744  
Fax: 770-452-0827  
E-mail: [MDQUINNPC@MINDSPRING.COM](mailto:MDQUINNPC@MINDSPRING.COM)

Fabrics and trims for pillows and upholstery cushions:

Frugal Fabrics

Contact: Lisa J. Keenan  
6315c Spalding Drive  
Norcross, GA 30092  
Phone: 770-409-0408  
Fax: 770-409-0411

Gibraltar vanity tops:

Royel Co, Inc.

Contact: Phil Pickens  
2626 School Drive  
Doraville, GA 30360  
Phone: 770-455-7330  
Fax: 770-452-0827

Lighting, low-voltage rail system, hand-crafted exterior sconces, and contemporary foyer suspension:

Highlighters

Contact: Polly Wallace  
690 Miami Circle, Suite 900  
Atlanta, GA 30324  
Phone: 404-264-1599  
Fax: 404-264-1213

Juno Lighting

Contact: Carl Cohen  
1300 South Wolf Road  
Des Plaines, IL 60017  
Phone: 847-823-8407  
Fax: 847-296-4056  
E-mail: [ccohen@junoltg.com](mailto:ccohen@junoltg.com)  
Web site: [www.junolighting.com](http://www.junolighting.com)

Wilsonart, Gibraltar, and solid surfacing:

Wilsonart International, Inc.

Contact: Steve Ducker (sales) & Todd Vogelsinger (marketing)  
2400 Wilson Place  
PO Box 6110  
Temple, TX 76503-6110  
Toll-free: 1-800-433-3222  
Fax: 254-207-2384  
Web site: [www.wilsonart.com](http://www.wilsonart.com)

Mirrors and shower doors throughout the house, crystal Flutex in kitchen:

Smyrna Custom Glass

Contact: Von Nordholz  
1923 Harold Avenue  
Smyrna, GA 30080  
Phone: 770-436-4342  
Fax: 770-437-0234

Custom storage systems in bedrooms, laundry, and utility room closets:

California Closets

Lance Stadmiller  
6155-B Jimmy Carter Blvd.  
Norcross, GA 30071  
Phone: 770-449-6141

Fax: 770-449-6147

Web site: [www.calclosets.com](http://www.calclosets.com)

Tile flooring:

- Limestone: 12" x 12" polished walnut in dark coffee, 18" x 18" in classic light and antique white
- Ceramic Papiro tile: floor and wall tile and a bullnose finishing piece in off white overtone with other colors blended throughout
- Natural stone: 4" x 4" classic light tumbled marble tile
- Autumn leaves in entryway: "Autumn Leaves by Ann Sacks" fall-colored ceramic leaves
- Chair rail moldings, fireplace mantels and border tile accents: 2" x 8" ceramic white ropes, 2" x 12" natural stone Botticino Ogee and 4" x 4" carved limestone

Ceramic Technics

Contact: Jerry King

1298 Old Alpharetta Road

Alpharetta, GA 30005

Phone: 770-740-0050

Fax: 770-740-1199

E-mail: [info@ceramictechnics.com](mailto:info@ceramictechnics.com)