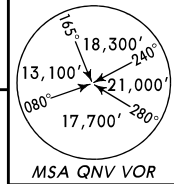
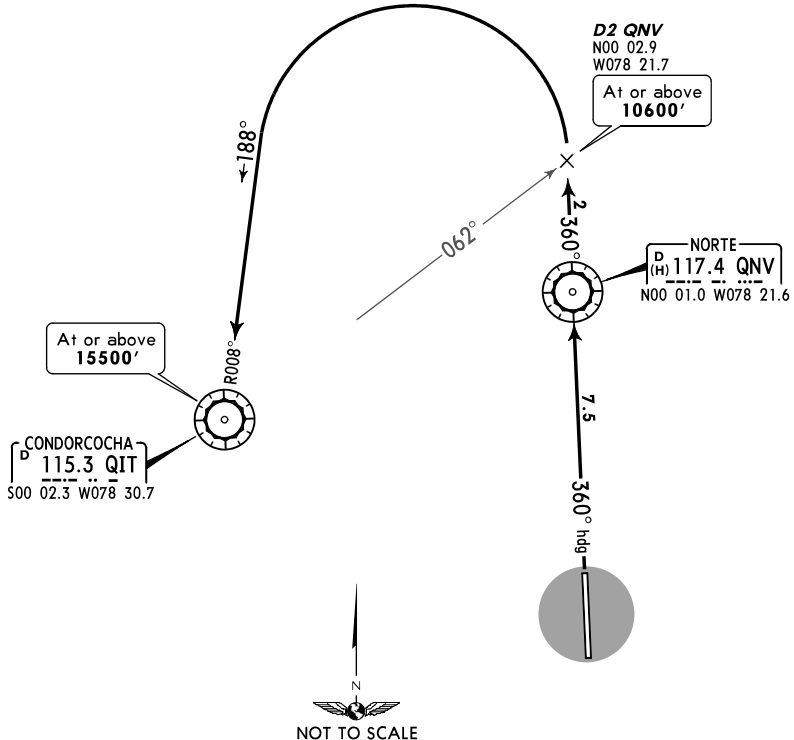


Apt Elev  
7910'

Trans level: FL180 Trans alt: 18000'



DEPARTURE 1  
[DEP 1]  
(RWY 36)



This SID requires take-off minimums:  
Ceiling 100m, Visibility 1000m and a minimum  
climb gradient of 5.0% (304' per NM).

Gnd speed-KT	75	100	150	200	250	300
5.0% V/V (fpm)	380	506	760	1013	1266	1519

Altitude at distance from QNV

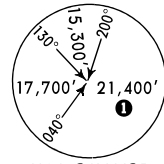
QNV DME	7.5	7	6	5	4	3	2	1	0
ALTITUDE	7792'	8096'	8400'	8704'	9008'	9312'	9616'	9920'	10224'

INITIAL CLIMB

After take-off **MAINTAIN** runway heading to QNV, then climb on course 360° (QNV R-360) to D2 QNV (QIT R-062), turn **LEFT** to intercept QIT R-008 (188° course) to QIT, or proceed according to ATC instructions.

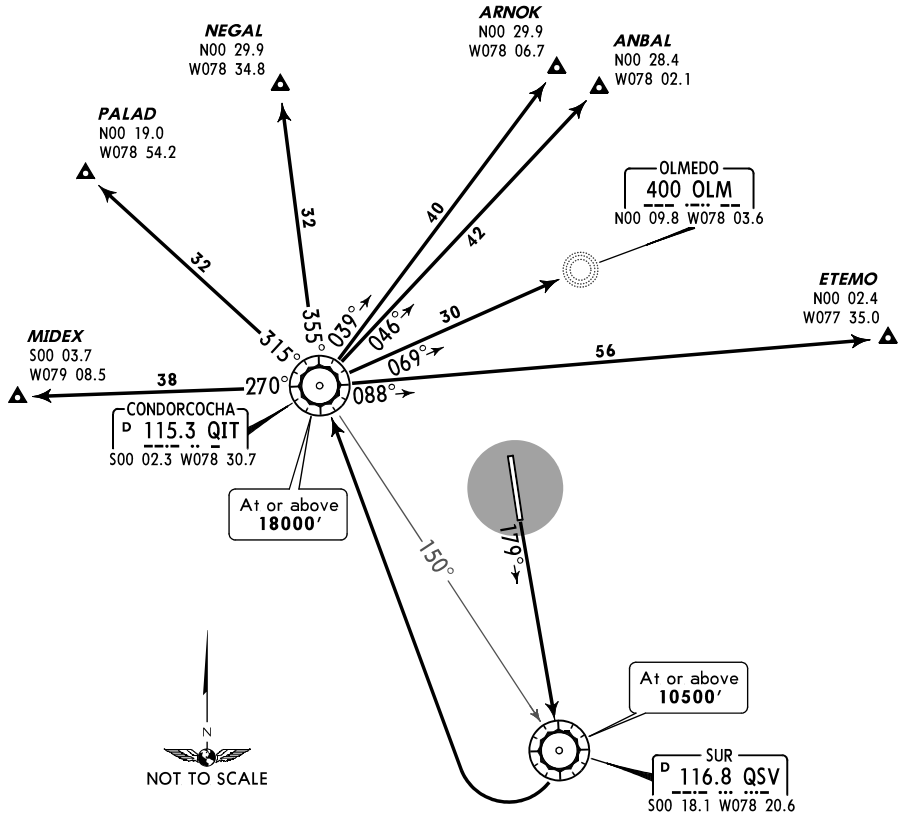
Apt Elev  
7910'

Trans level: FL180 Trans alt: 18000'



MSA QSV VOR  
① 16,600'  
within 10 NM

DEPARTURE 2  
[DEP2]  
(RWY 18)



This SID requires take-off minimums:  
Ceiling 100m, Visibility 1000m and a minimum  
climb gradient of 4.5% (273' per NM).

Direct distance from Mariscal Sucre  
De La Ciudad De Quito Intl to:  
QSV 11 NM

Gnd speed-KT	75	100	150	200	250	300
4.5% V/V (fpm)	342	456	684	911	1139	1367

Altitude at distance from QSV

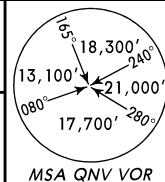
QSV DME	9	8	7	6	5	4	3	2	1	0
ALTITUDE	8063'	8338'	9609'	9882'	9155'	9428'	9701'	9974'	10247'	10520'

INITIAL CLIMB

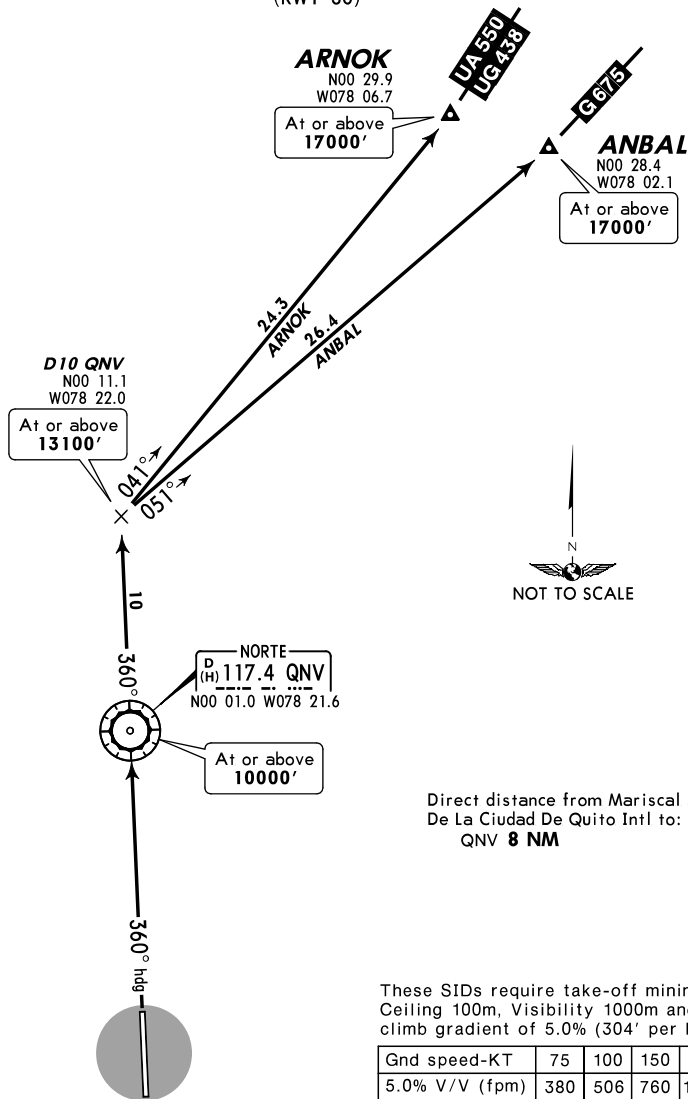
After take-off, direct to QSV. Turn RIGHT to QIT climbing to 18000' or proceed according to ATC instructions.

Apt Elev  
7910'

Trans level: FL180 Trans alt: 18000'



**ANBAL [ANBAL], ARNOK [ARNOK]  
DEPARTURES**  
(RWY 36)



Altitude at distance from QNV

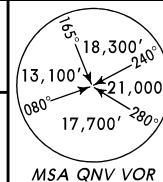
QNV DME	7.5	7	6	5	4	3	2	1	0
ALTITUDE	7792'	7940'	8250'	8550'	8860'	9160'	9460'	9770'	10070'

**INITIAL CLIMB**

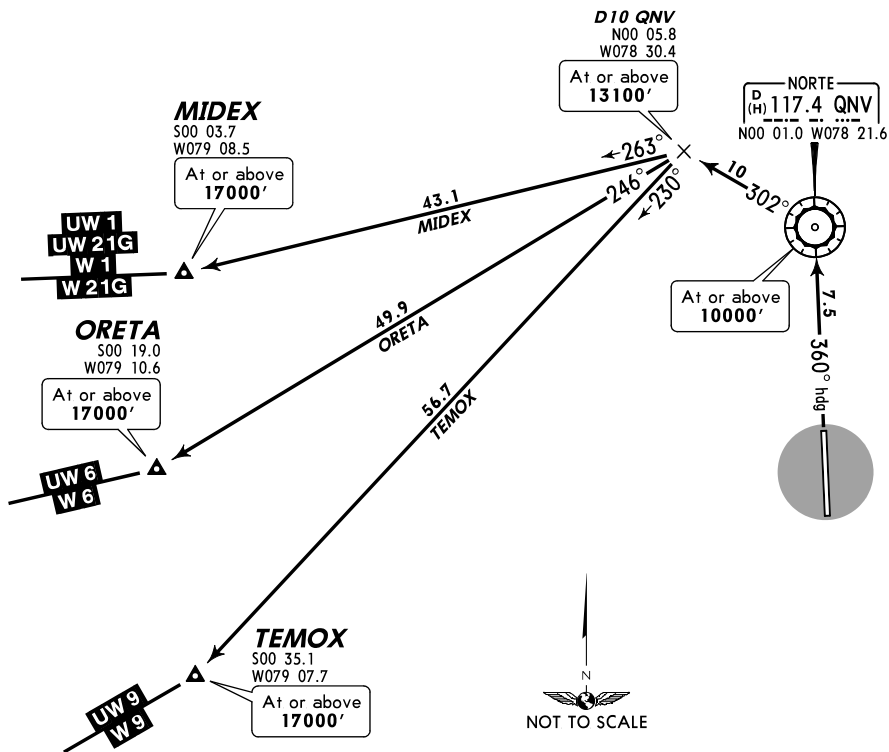
After take-off **MAINTAIN** runway heading to QNV, then climb on course 360° (QNV R-360) to D10 QNV, turn **RIGHT** to track 041° direct to ARNOK; or, turn **RIGHT** to track 051° direct to ANBAL; or, proceed according to ATC instructions.

Apt Elev  
7910'

Trans level: FL180 Trans alt: 18000'



MIDEX [MIDEX], ORETA [ORETA], TEMOX [TEMOX]  
DEPARTURES  
(RWY 36)



These SIDs require take-off minimums:  
Ceiling 100m, Visibility 1000m and a minimum  
climb gradient of 5.0% (304' per NM) to D10 QNV.

Gnd speed-KT	75	100	150	200	250	300
5.0% V/V (fpm)	380	506	760	1013	1266	1519

Altitude at distance from QNV

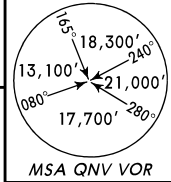
QNV DME	7.5	7	6	5	4	3	2	1	0
ALTITUDE	7792'	7940'	8250'	8550'	8860'	9160'	9460'	9770'	10070'

INITIAL CLIMB

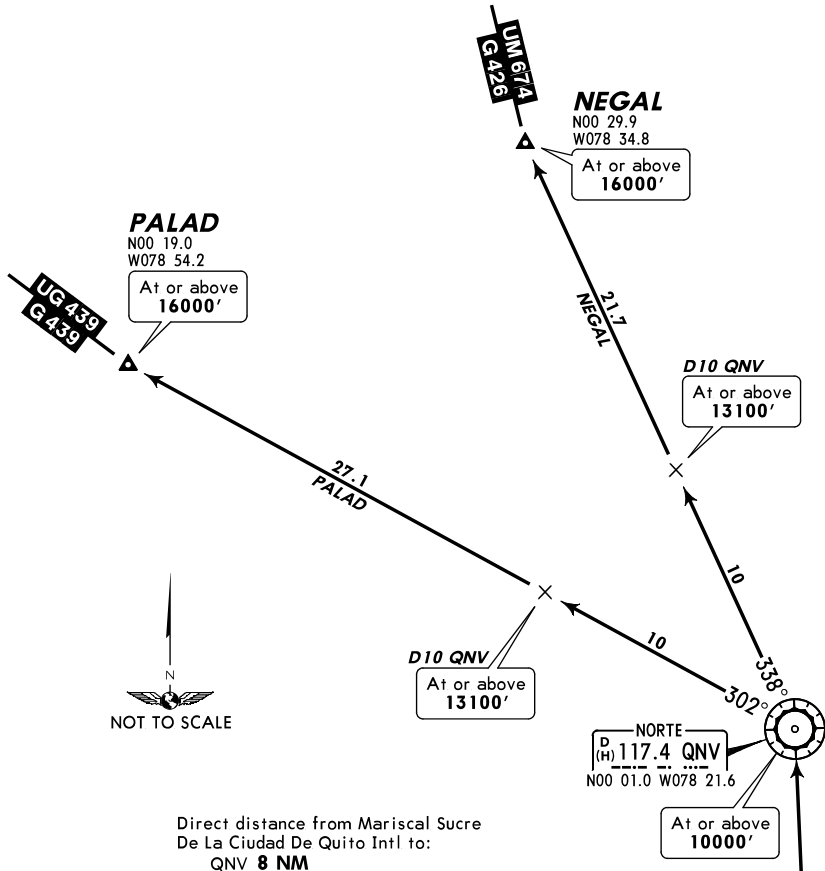
After take-off **MAINTAIN** runway heading to QNV, then climb on course 302° (QNV R-302) to D10 QNV, turn LEFT to track 263° direct MIDEX; or, turn LEFT to track 246° direct ORETA; or, turn LEFT to track 230° direct TEMOX; or, proceed according to ATC instructions.

Apt Elev  
7910'

Trans level: FL180 Trans alt: 18000'



**NEGAL [NEGAL], PALAD [PALAD]  
DEPARTURES  
(RWY 36)**



Direct distance from Mariscal Sucre  
De La Ciudad De Quito Intl to:  
QNV **8 NM**

These SIDs require take-off minimums:  
Ceiling 100m, Visibility 1000m and a minimum  
climb gradient of 5.0% (304' per NM) to D10 QNV.

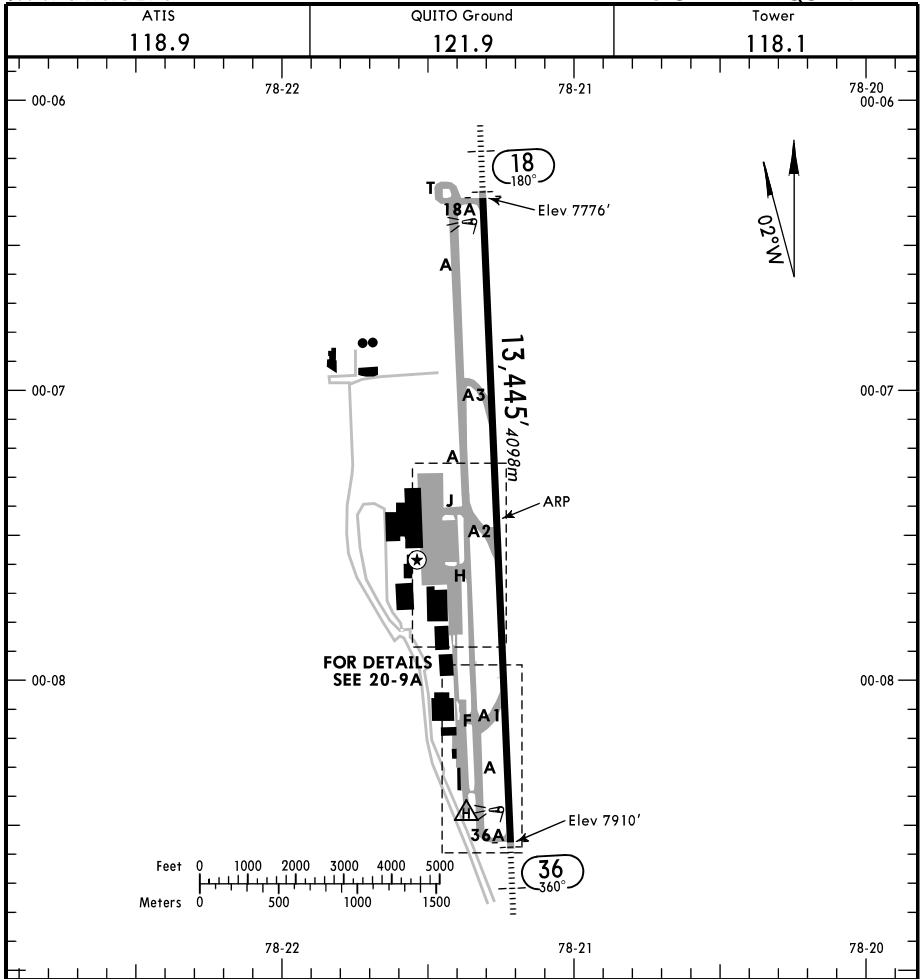
Gnd speed-KT	75	100	150	200	250	300
5.0% V/V (fpm)	380	506	760	1013	1266	1519

Altitude at distance from QNV

QNV DME	7.5	7	6	5	4	3	2	1	0
ALTITUDE	7792'	7940'	8250'	8550'	8860'	9160'	9460'	9770'	10070'

**INITIAL CLIMB**

After take-off **MAINTAIN** runway heading to QNV. Turn **LEFT** to intercept QNV R-302 (302° course) to PALAD; or, turn **LEFT** to intercept QNV R-338 (338° course) to NEGAL; or, proceed according to ATC instructions.



ADDITIONAL RUNWAY INFORMATION

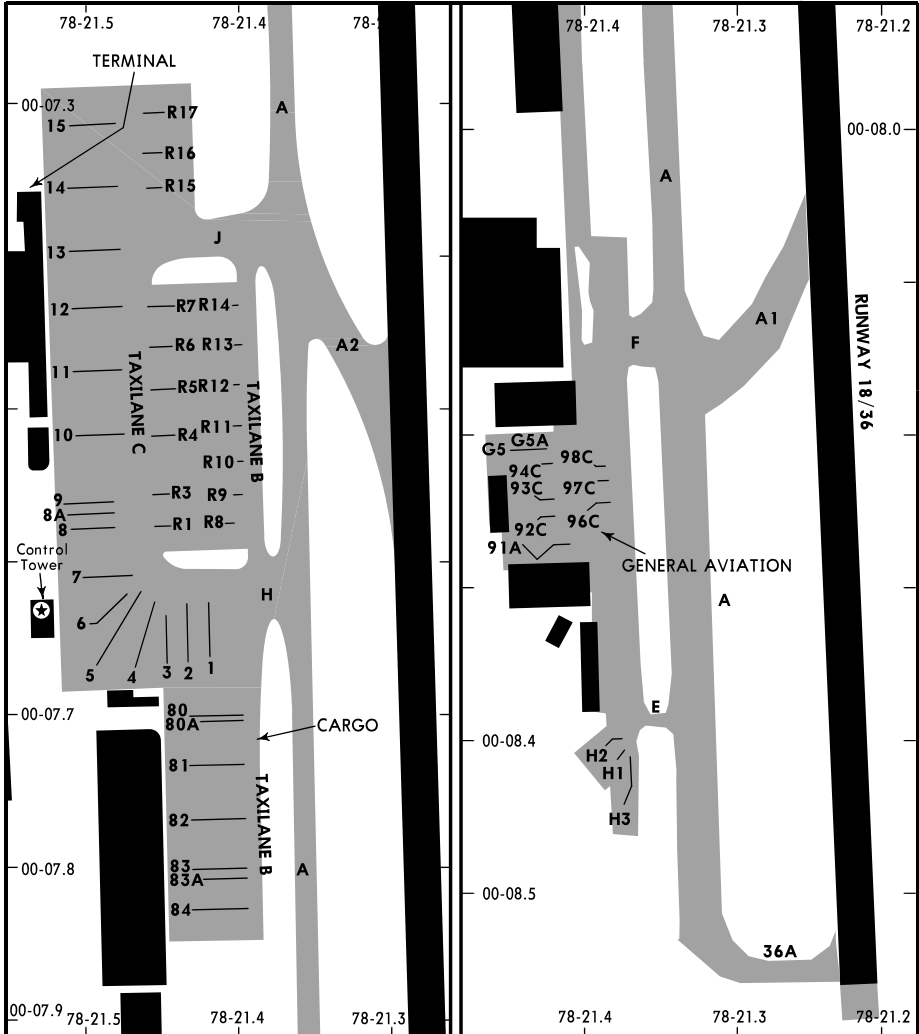
RWY					USABLE LENGTHS LANDING BEYOND		TAKE-OFF	WIDTH
	HIRL	SALS	PAPI-L (angle 3.2°)		Threshold	Glide Slope		
18 36	HIRL	SALS	PAPI-L (angle 3.2°)			12299' 3749m		148' 45m
	HIRL	ALS	PAPI-L (angle 3.2°)					

TAKE-OFF

All Rwy's

100m - 1.5 km

A  
 B  
 C  
 D



**PARKING GATE COORDINATES**

GATE No.	COORDINATES	GATE No.	COORDINATES
<b>TERMINAL</b>		<b>CARGO</b>	
1	S00 07.7 W078 21.4	80, 80A, 81	S00 07.7 W078 21.5
2 thru 5	S00 07.7 W078 21.5	82, 83, 83A, 84	S00 07.8 W078 21.5
6 thru 8, 8A, 9	S00 07.6 W078 21.5	<b>GENERAL AVIATION</b>	
10 thru 12	S00 07.5 W078 21.6	91A, 92C	S00 08.3 W078 21.4
13 thru 15	S00 07.4 W078 21.6	93C, 94C	S00 08.2 W078 21.4
R1, R3	S00 07.6 W078 21.5	96C	S00 08.3 W078 21.4
R4 thru R7	S00 07.5 W078 21.5	97C, 98C	S00 08.2 W078 21.4
R8, R9	S00 07.6 W078 21.4	G5, G5A	S00 08.2 W078 21.4
R10 thru R14	S00 07.5 W078 21.4	H1, H2	S00 08.4 W078 21.4
R15 thru R17	S00 07.4 W078 21.5	H3	S00 08.5 W078 21.4

SEQM/UIO 15 MAR 13  
 MARISCAL SUCRE DE LA  
 CIUDAD DE QUITO INTL

JEPPESEN

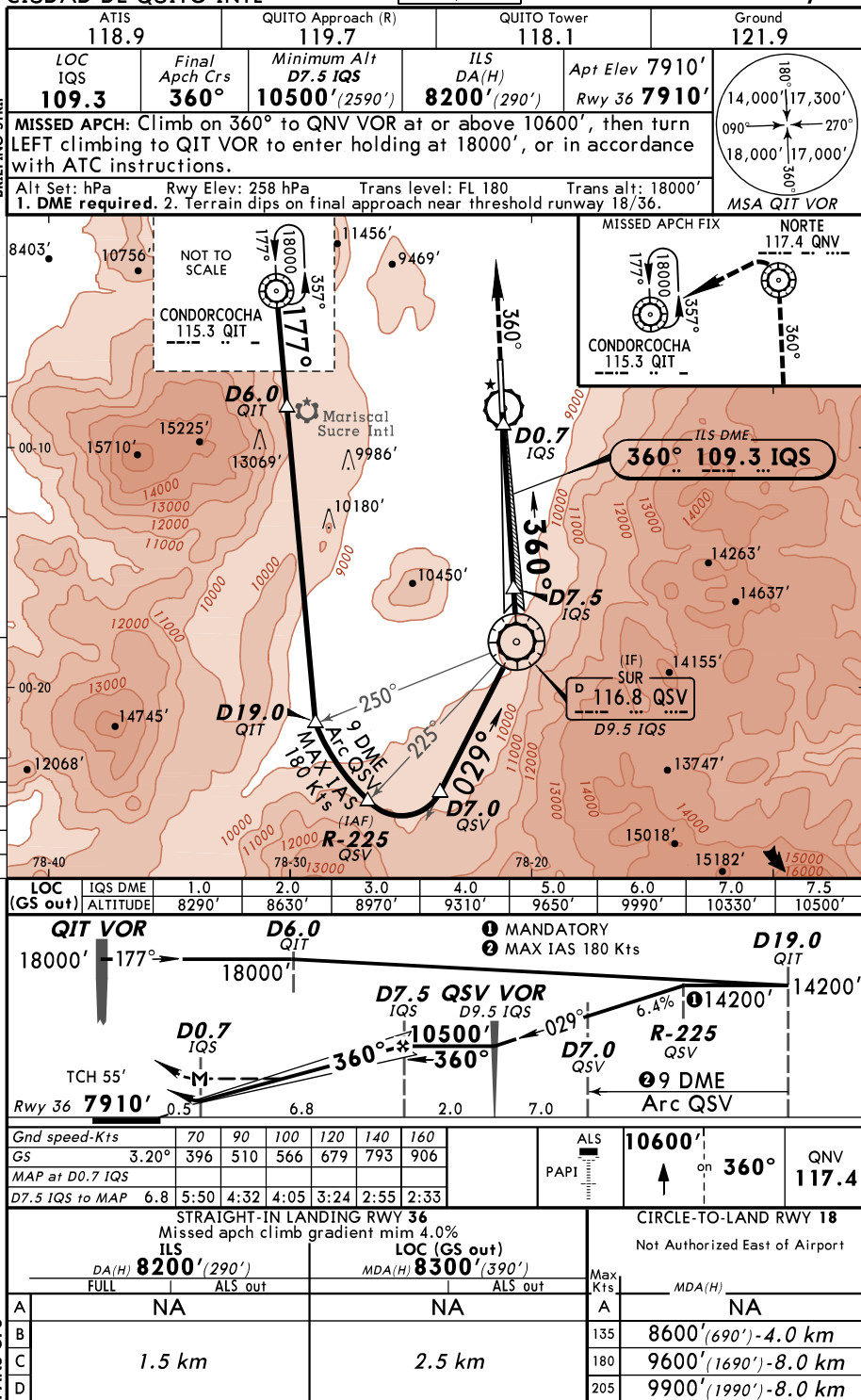
MISSED APCH  
 CLIMB GRADIENT  
 MIM 4.0%

QUITO, ECUADOR

(21-1)

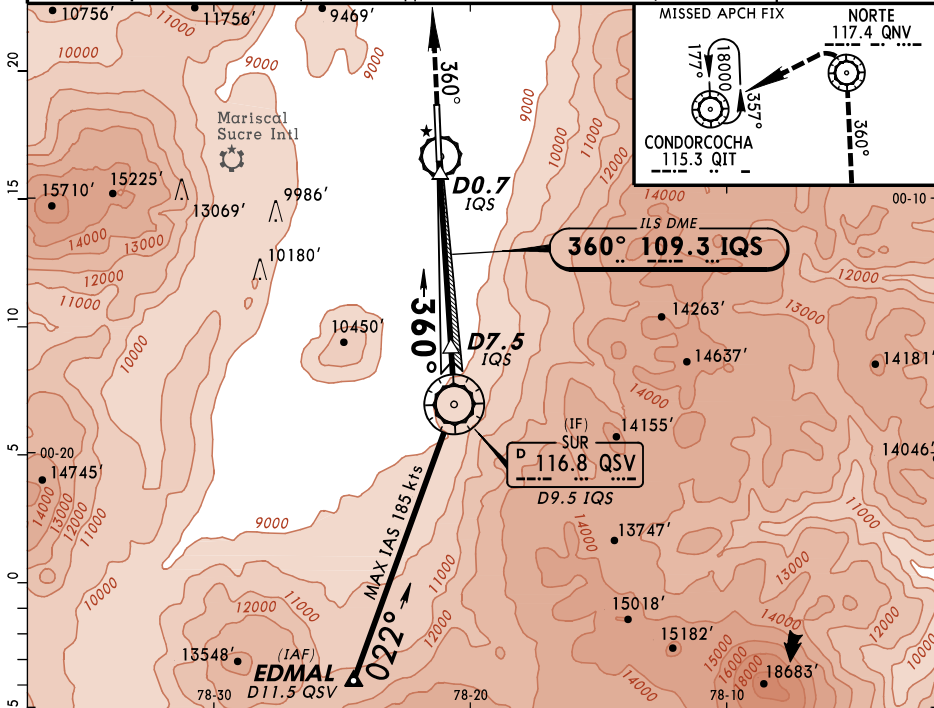
CAT B, C & D

APCH 1 VOR ILS Rwy 36

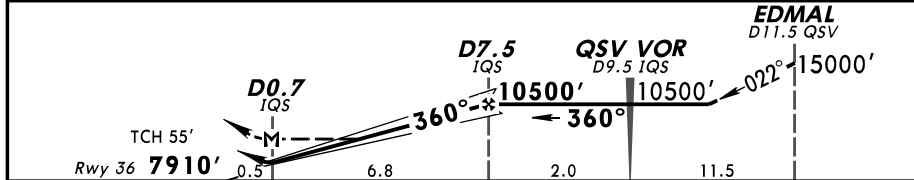




ATIS 118.9		QUITO Approach (R) 119.7		QUITO Tower 118.1		Ground 121.9	
LOC IQS <b>109.3</b>	Final Apch Crs <b>360°</b>	Minimum Alt <b>D7.5 IQS</b> 10500' (2590')	ILS DA(H) <b>8200'</b> (290')	Apt Elev <b>7910'</b> Rwy 36 <b>7910'</b>			
<p><b>MISSED APCH:</b> Climb on 360° to QNV VOR at or above 10600', then turn LEFT climbing to QIT VOR to enter holding at 18000', or in accordance with ATC instructions.</p>							
Alt Set: hPa		Rwy Elev: 258 hPa		Trans level: FL 180		Trans alt: 18000'	
<p>1. DME required. 2. Terrain dips on final approach near threshold runway 18/36.</p>							



LOC (GS out)	IQS DME	1.0	2.0	3.0	4.0	5.0	6.0	7.0	7.5
ALTIMETER	ALTITUDE	8290'	8630'	8970'	9310'	9650'	9990'	10330'	10500'



Gnd speed-Kts	70	90	100	120	140	160	ALS 10600'	PAPI	↑ on 360°	QNV 117.4	
GS	3.20°	396	510	566	679	793					906
MAP at D0.7 IQS											
D7.5 IQS to MAP	6.8	5:50	4:32	4:05	3:24	2:55	2:33				

STRAIGHT-IN LANDING RWY 36 Missed apch climb gradient mim 4.0%						CIRCLE-TO-LAND RWY 18 Not Authorized East of Airport						
ILS DA(H) <b>8200'</b> (290')			LOC (GS out)			MDA(H) <b>8300'</b> (390')			Max Kts			
FULL			ALS out			ALS out			MDA(H)			
A	NA			NA			NA					
B							135			8600' (690') - 4.0 km		
C	1.5 km			2.5 km			180			9600' (1690') - 8.0 km		
D							205			9900' (1990') - 8.0 km		

PANS OPS

SEQM/UIO

MARISCAL SUCRE DE LA CIUDAD DE QUITO INTL

JEPPESEN 15 MAR 13 (23-1)

MISSED APCH CLIMB GRADIENT MIM 4.0%

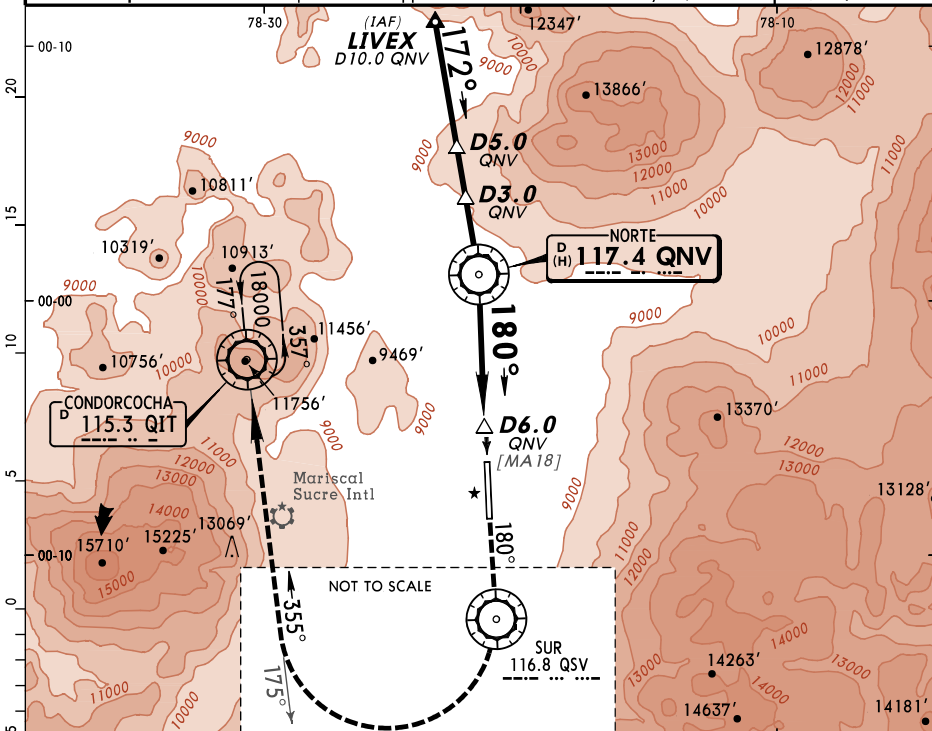
QUITO, ECUADOR

CAT B, C & D

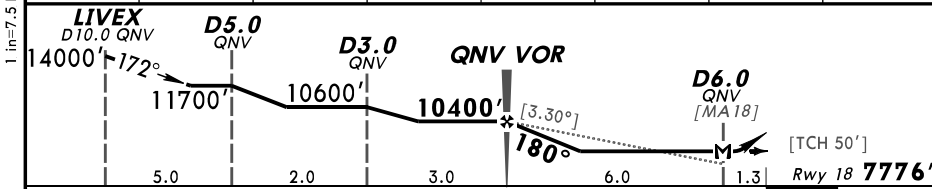
APCH 6 VOR Rwy 18

ATIS 118.9		QUITO Approach (R) 119.7		QUITO Tower 118.1		Ground 121.9	
VOR QNV <b>117.4</b>	Final Apch Crs <b>180°</b>	Minimum Alt QNV VOR <b>10400'</b> (2624')	MDA(H) <b>8350'</b> (574')	Apt Elev 7910' Rwy 18 <b>7776'</b>			
<p><b>MISSED APCH:</b> Climb on 180° to QSV VOR at or above 11500', then turn RIGHT, heading 355° (QIT VOR R-175) climbing to QIT VOR to enter holding at 18000' or in accordance with ATC instructions.</p> <p>Alt Set: hPa    Rwy Elev: 254 hPa    Trans level: FL 180    Trans alt: 18000'</p> <p>1. DME required. 2. Terrain dips on final approach near threshold runway 18/36.</p>							
							<p>① 21000' MSA QNV VOR</p>

BRIEFING STRIP™



QNV DME	QNV VOR	1.0	2.0	3.0	4.0	5.0	6.0
ALTITUDE	10400'	10060'	9720'	9380'	9040'	8700'	8350'



Gnd speed-Kts	70	90	100	120	140	160
Descent angle [3.30°]	409	526	584	701	817	934
MAP at D6.0 QNV						
QNV VOR to MAP	6.0	5:09	4:00	3:36	3:00	2:34
				2:34		2:15

SALS	11500'	on	180°	QSV
PAPI-L	↑			116.8

STRAIGHT-IN LANDING RWY 18	
Missed apch climb gradient mim 4.0%	
MDA(H) <b>8350'</b> (574')	
ALS out	
A	NA
B	
C	2.5 km
D	

CIRCLE-TO-LAND RWY 36	
Not Authorized East of Airport	
Max Kts	
A	NA
135	8600' (690') - 4.0 km
180	9600' (1690') - 8.0 km
205	9900' (1990') - 8.0 km

PANS OPS

CHANGES: New procedure.

© JEPPESEN, 2013. ALL RIGHTS RESERVED.

SEQM/UIO

MARISCAL SUCRE DE LA CIUDAD DE QUITO INTL

JEPPESEN 15 MAR 13 (23-2)

MISSED APCH CLIMB GRADIENT MIM 4.0%

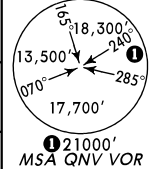
QUITO, ECUADOR

CAT B, C & D

APCH 7 VOR Rwy 18

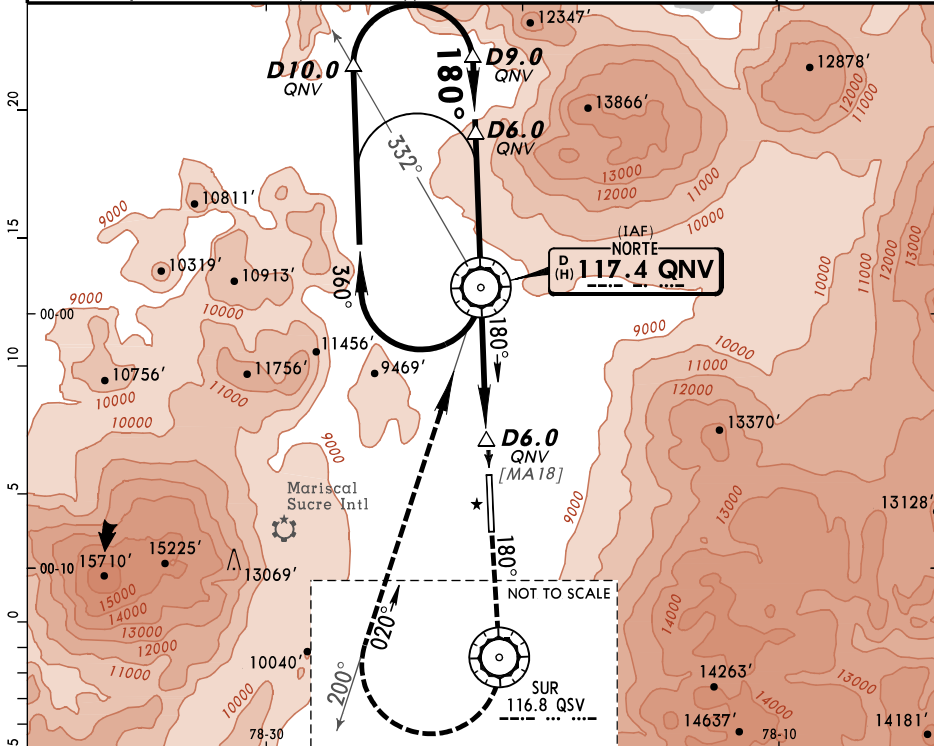
ATIS 118.9	QUITO Approach (R) 119.7	QUITO Tower 118.1	Ground 121.9
---------------	-----------------------------	----------------------	-----------------

VOR QNV <b>117.4</b>	Final Apch Crs <b>180°</b>	Minimum Alt QNV VOR <b>10400'</b> (2624')	MDA(H) <b>8350'</b> (574')	Apt Elev 7910' Rwy 18 <b>7776'</b>
-------------------------	-------------------------------	--	-------------------------------	---------------------------------------

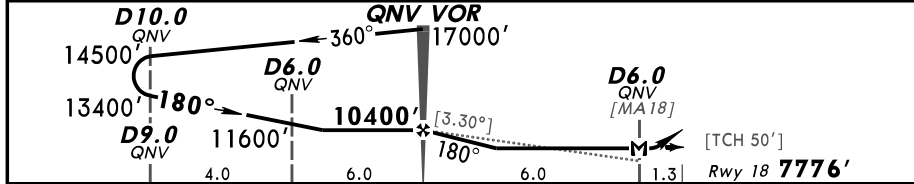


**MISSED APCH:** Climb and maintain runway heading to QSV VOR at or above 11500', then turn RIGHT heading 020° (QNV VOR R-200) climbing to QNV VOR at 17000' or in accordance with ATC instructions.

Alt Set: hPa Rwy Elev: 254 hPa Trans level: FL 180 Trans alt: 18000'  
1. DME required. 2. Terrain dips on final approach near threshold runway 18/36.



QNV DME	QNV VOR	1.0	2.0	3.0	4.0	5.0	6.0
ALTITUDE	10400'	10060'	9720'	9380'	9040'	8700'	8350'



Gnd speed-Kts	70	90	100	120	140	160
Descent angle [3.30°]	409	526	584	701	817	934
MAP at D6.0 QNV						
QNV VOR to MAP	6.0	5:09	4:00	3:36	3:00	2:34
						2:15

SALS	<b>11500'</b>	Runway	QSV
PAP-L	↑	hdg	<b>116.8</b>

STRAIGHT-IN LANDING RWY 18	
Missed apch climb gradient mim 4.0%	
MDA(H) <b>8350'</b> (574')	
ALS out	
A	NA
B	
C	2.5 km
D	

CIRCLE-TO-LAND RWY 36	
Not Authorized East of Airport	
Max Kts	MDA(H)
A	NA
135	8600' (690') - 4.0 km
180	9600' (1690') - 8.0 km
205	9900' (1990') - 8.0 km

PANS OPS

CHANGES: New procedure.

© JEPPESEN, 2013. ALL RIGHTS RESERVED.

# SEQM/UIO

## MARISCAL SUCRE DE LA CIUDAD DE QUITO INTL

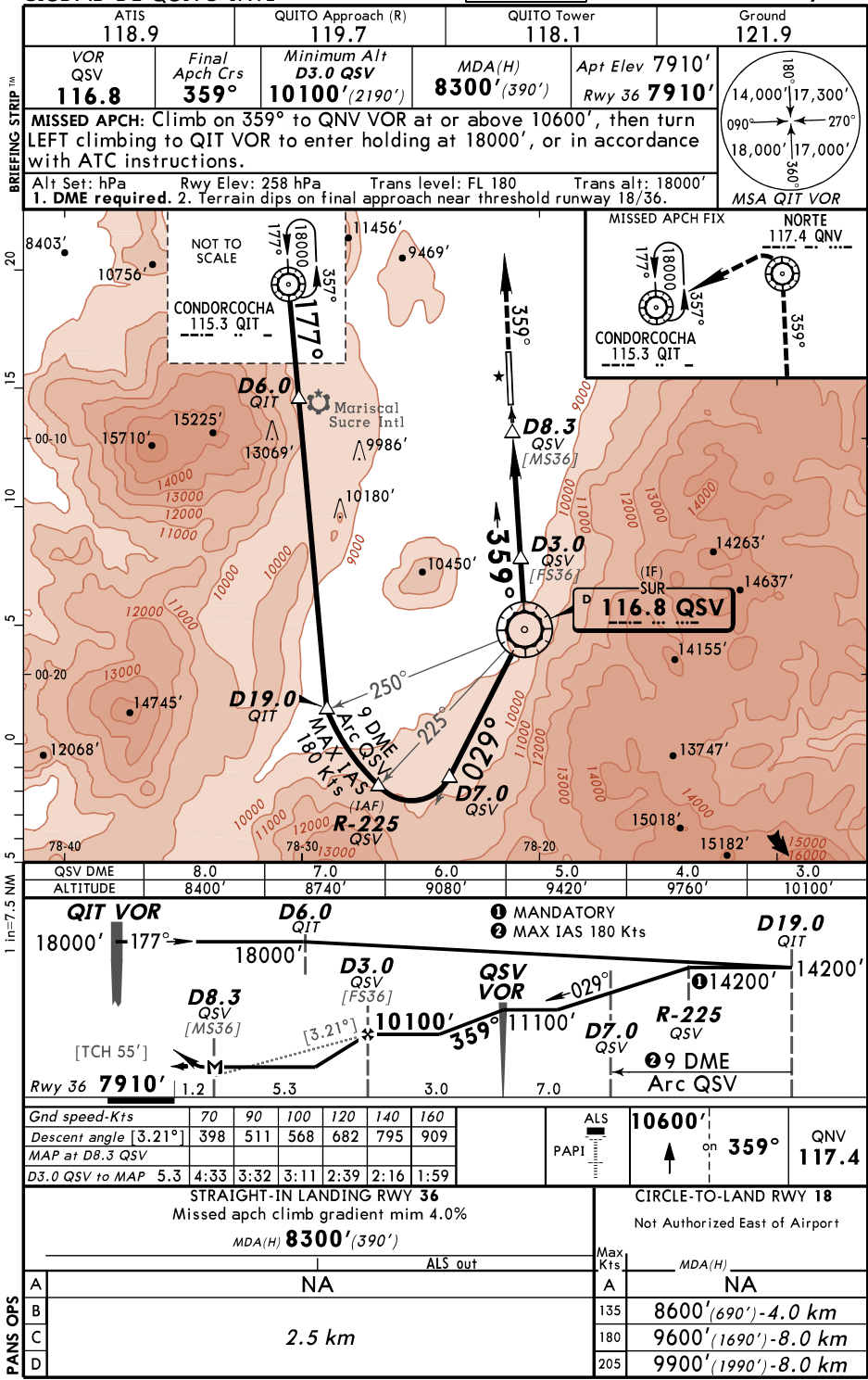
15 MAR 13 (23-3)

MISSED APCH  
CLIMB GRADIENT  
MIM 4.0%

# QUITO, ECUADOR

## APCH 2 VOR Rwy 36

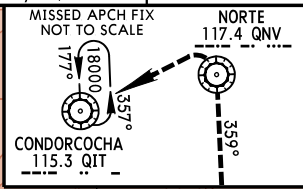
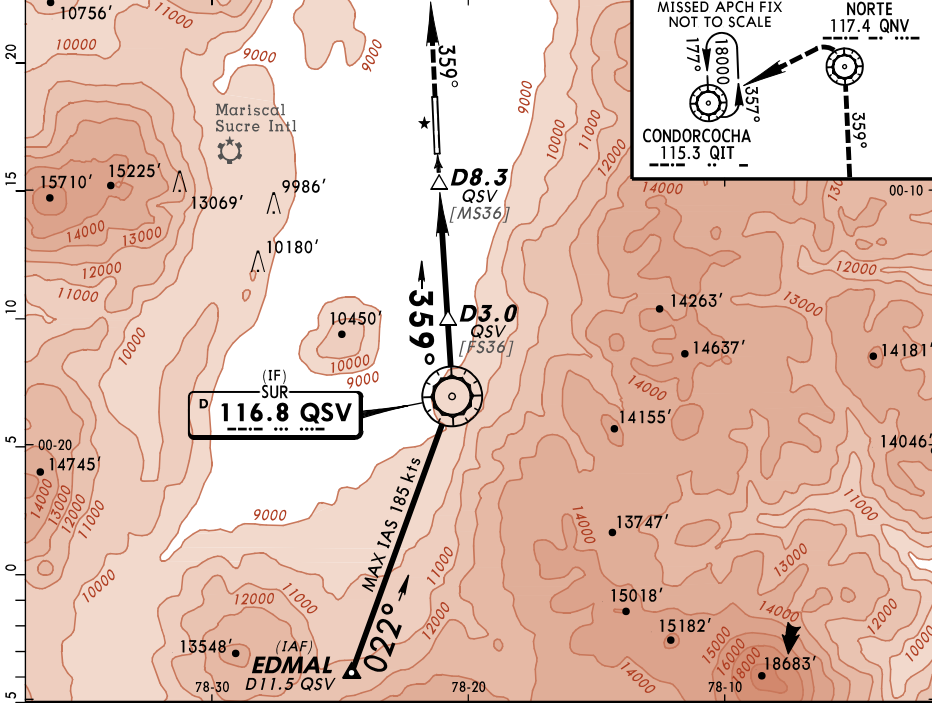
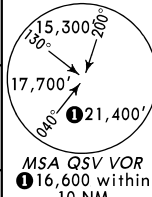
CAT B, C & D



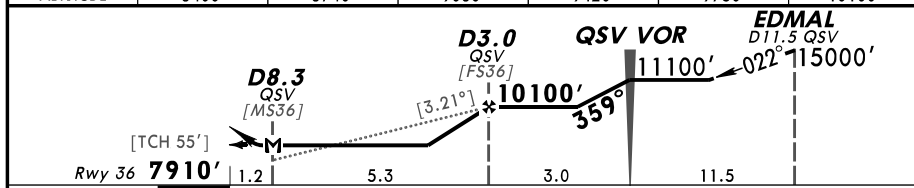
CHANGES: Missed approach, profile depiction.

© JEPPESEN, 2012, 2013. ALL RIGHTS RESERVED.

ATIS 118.9		QUITO Approach (R) 119.7		QUITO Tower 118.1		Ground 121.9	
VOR QSV <b>116.8</b>	Final Apch Crs <b>359°</b>	Minimum Alt <b>D3.0 QSV</b> 10100' (2190')	MDA(H) <b>8300'</b> (390')	Apt Elev 7910' Rwy 36 <b>7910'</b>			
<p><b>MISSED APCH:</b> Climb on 359° to QNV VOR at or above 10600', then turn LEFT climbing to QIT VOR to enter holding at 18000', or in accordance with ATC instructions.</p>							
<p>Alt Set: hPa Rwy Elev: 258 hPa Trans level: FL 180 Trans alt: 18000'  <b>1. DME required.</b> 2. Terrain dips on final approach near threshold runway 18/36.</p>							



QSV DME	8.0	7.0	6.0	5.0	4.0	3.0
ALTITUDE	8400'	8740'	9080'	9420'	9760'	10100'



Gnd speed-Kts	70	90	100	120	140	160	ALS PAPI	10600'	↑ on 359°	QNV 117.4
Descent angle [3.21°]	398	511	568	682	795	909				
MAP at D8.3 QSV										
D3.0 QSV to MAP	5.3	4:33	3:32	3:11	2:39	2:16	1:59			

STRAIGHT-IN LANDING RWY 36 Missed apch climb gradient mim 4.0%						CIRCLE-TO-LAND RWY 18 Not Authorized East of Airport					
FULL						ALS out					
MDA(H) <b>8300'</b> (390')						Max Kts					
A	NA						A				
B							135				
C	2.5 km						180				
D							205				
						8600' (690') - 4.0 km					
						9600' (1690') - 8.0 km					
						9900' (1990') - 8.0 km					